

Light efficiency:



Light quality:



Color temperature:



Output: 1127 lm

Peak: 298 cd

Power: 16.9 W

PF: 0.99



Product name:

105050BK

Item number:

Date and time:

3/15/2018 8:34:06 AM

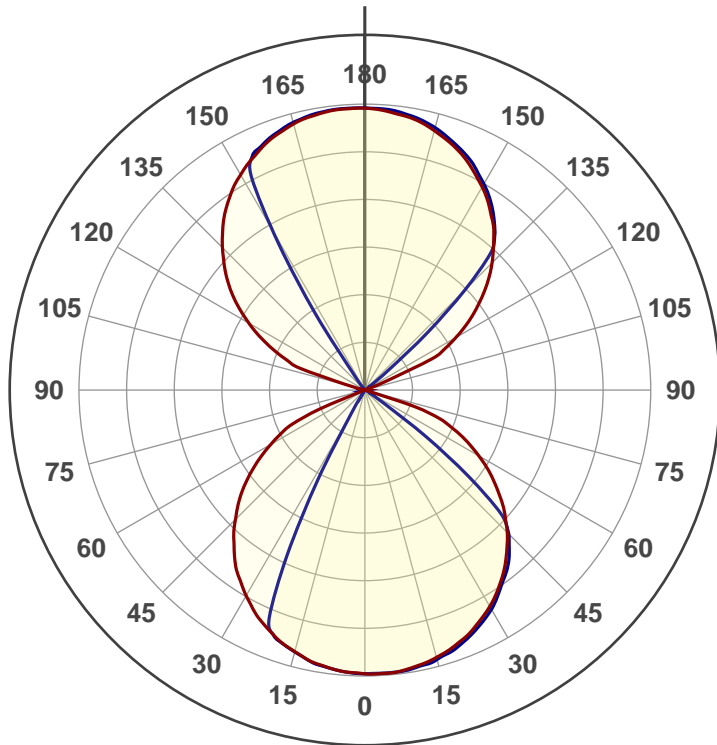
Description:

**Using Power 2 supply
Used internal driver.**

Driver:

**LSC9W500 UNI
HEP Group
Uout- 6.5-18VDC
Iout- 500mA const.**

Wall mount plate facing up

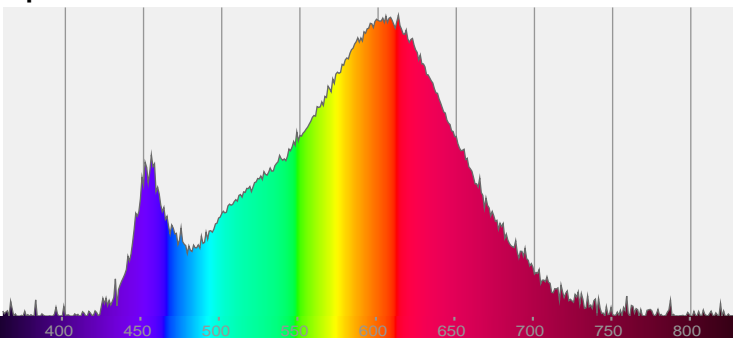


Beam angle **360°**

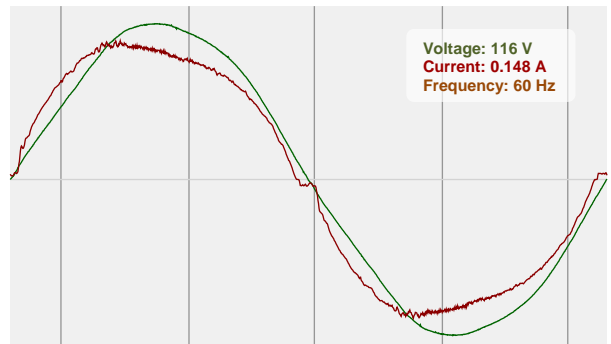


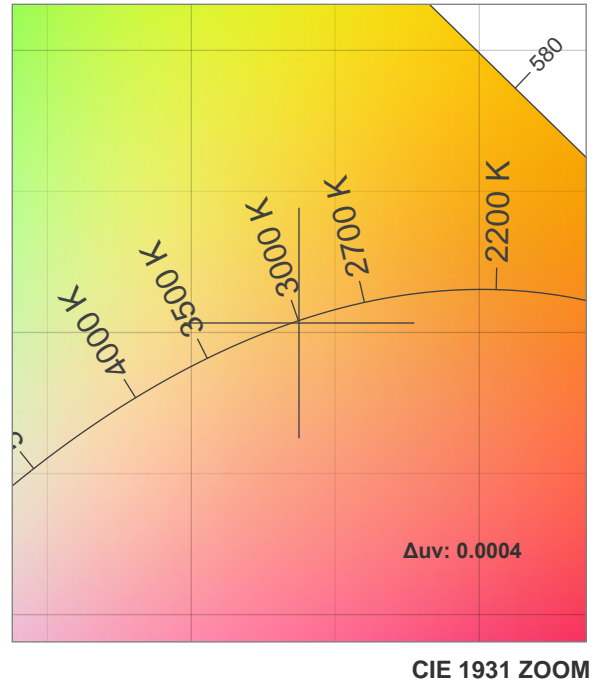
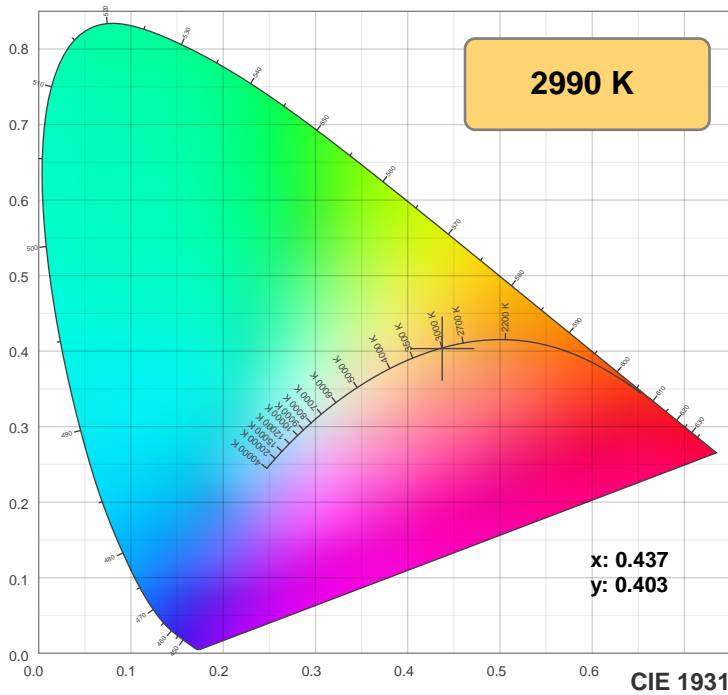
CIE 1931
x: 0.437
y: 0.403

Spectra

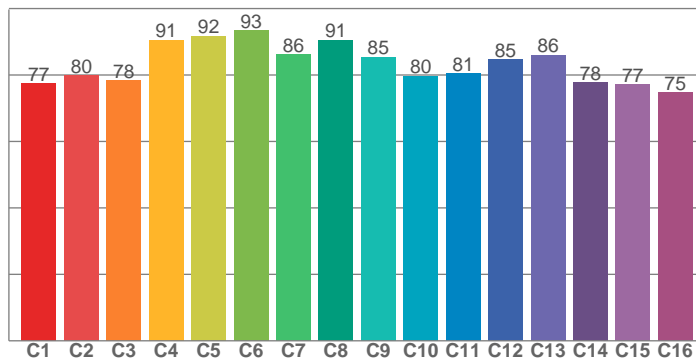


Power

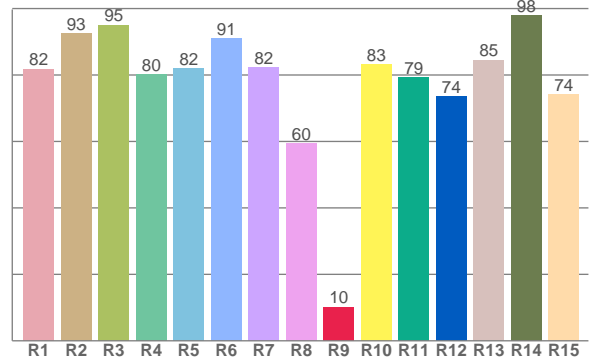




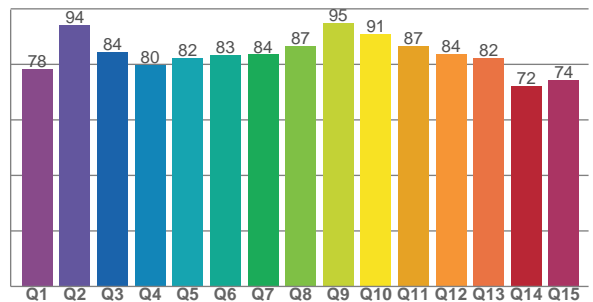
TM30: 83.4



CRI: 83.1 (R1-R8)



CQS: 82.6



CRI R values, only R1-R8 are used to calculate final CRI value

R1	R2	R3	R4	R5	R6	R7	R8	R9	R10	R11	R12	R13	R14	R15
81.8	92.6	95.1	80.3	82.1	91.1	82.2	59.6	10.2	83.1	79.4	73.7	84.6	98.0	74.2

TM30 C values, 16 binned values out of total of 99 C values

C1	C2	C3	C4	C5	C6	C7	C8	C9	C10	C11	C12	C13	C14	C15	C16
77.4	79.8	78.4	90.5	91.8	93.5	86.1	90.5	85.4	79.7	80.5	84.6	86.0	77.7	77.1	74.7

CQS Q values

Q1	Q2	Q3	Q4	Q5	Q6	Q7	Q8	Q9	Q10	Q11	Q12	Q13	Q14	Q15
78.4	94.3	84.4	79.7	82.2	83.3	83.6	86.5	94.8	91.0	86.8	83.7	82.3	72.1	74.3

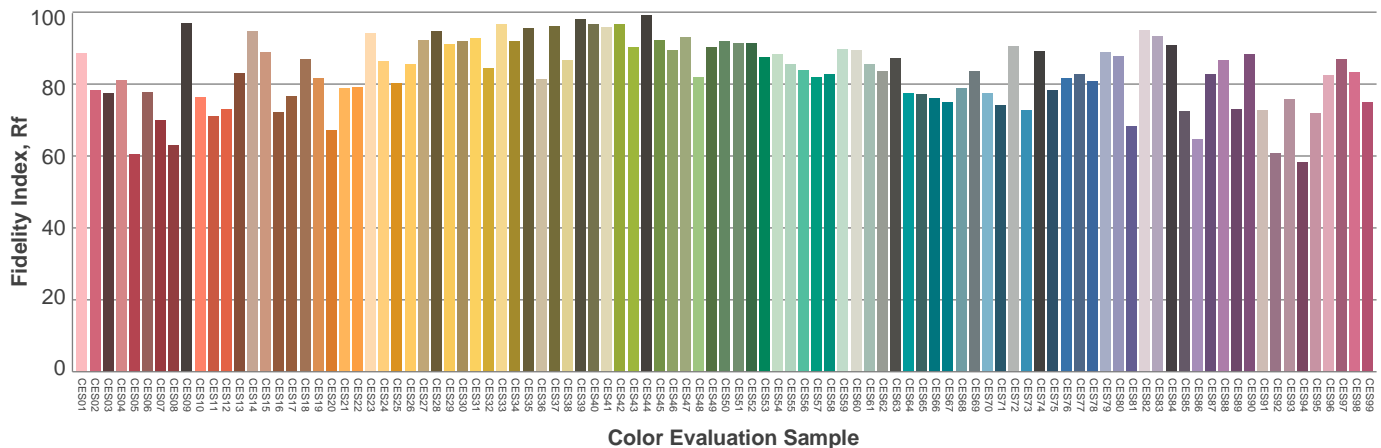
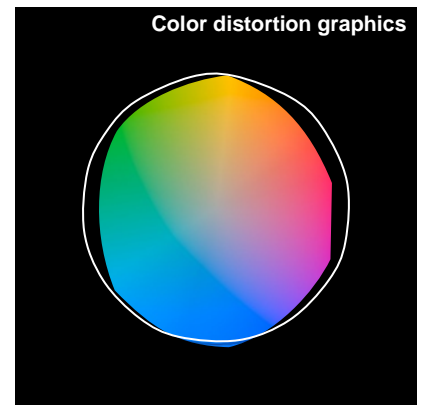
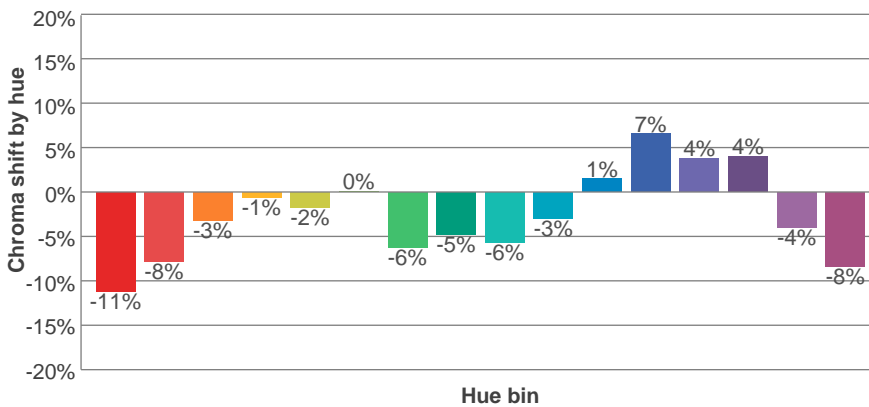
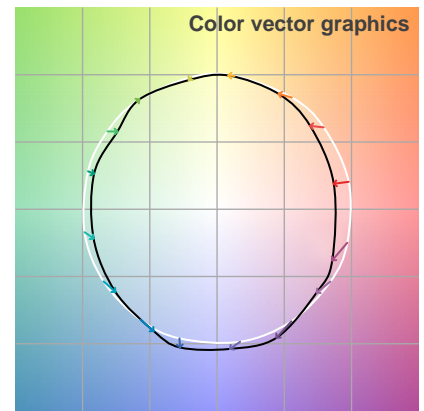
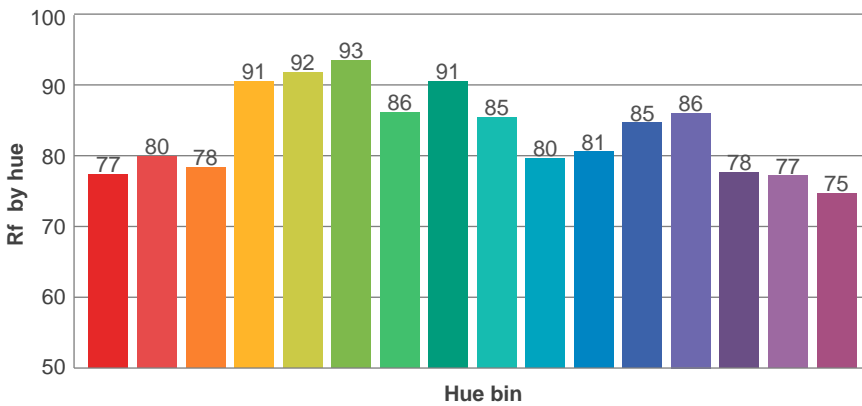
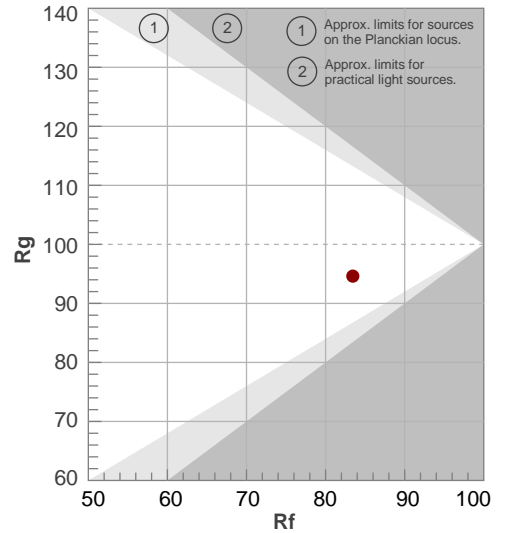
Color parameters

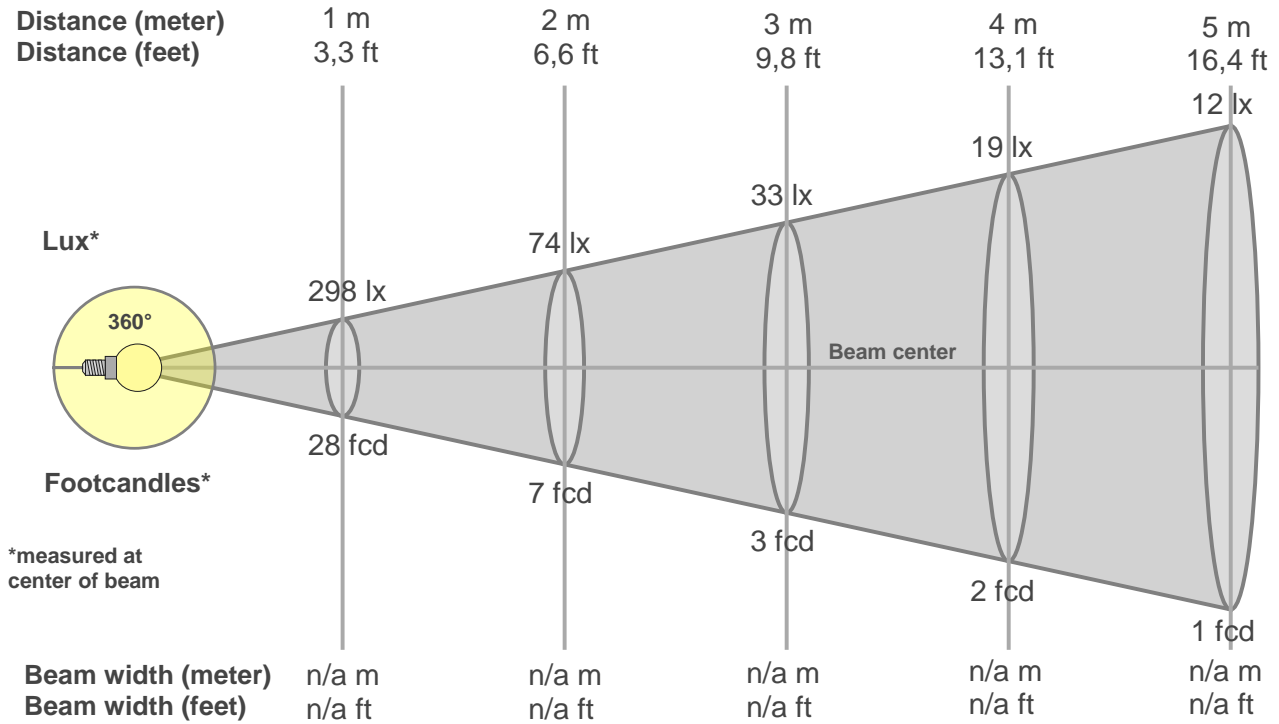
Color temperature	Color rendering index	Red component	Color fidelity	Color gamut	Color quality scale	Color coordinate cie 1931	Color coordinate cie 1931	Color coordinate	Color coordinate	Color deviation from black body
CCT	CRI	CRI R9	TM30 Rf	TM30 Rg	CQS	x	y	u	v	Δuv
2990 K	83.1	10.2	83.4	94.6	82.6	0.437	0.403	0.251	0.347	0.0004

Rf 83.4
Fidelity index Rf

Rg 94.6
Gammut index Rg

Hue Bin	R _f	Graphic shifts (%)	
		Chroma	Hue
1	77	-11%	1%
2	80	-8%	7%
3	78	-3%	10%
4	91	-1%	5%
5	92	-2%	2%
6	93	0%	-2%
7	86	-6%	-4%
8	91	-5%	1%
9	85	-6%	6%
10	80	-3%	11%
11	81	1%	13%
12	85	7%	2%
13	86	4%	-8%
14	78	4%	-16%
15	77	-4%	-12%
16	75	-8%	-15%





Beam intensities from 1-20m

1m	2m	3m	4m	5m	6m	7m	8m	9m	10m	11m	12m	13m	14m	15m	16m	17m	18m	19m	20m
3.3ft	6.6ft	9.8ft	13.1ft	16.4ft	19.7ft	23ft	26.2ft	29.5ft	32.8ft	36.1ft	39.4ft	42.7ft	45.9ft	49.2ft	52.5ft	55.8ft	59.1ft	62.3ft	65.6ft
298lx	74lx	33lx	19lx	12lx	8lx	6lx	5lx	4lx	3lx	2lx	2lx	2lx	2lx	1lx	1lx	1lx	1lx	1lx	1lx
27.7fcd	6.9fcd	3.1fcd	1.7fcd	1.1fcd	0.8fcd	0.6fcd	0.4fcd	0.3fcd	0.3fcd	0.2fcd	0.2fcd	0.2fcd	0.2fcd	0.1fcd	0.1fcd	0.1fcd	0.1fcd	0.1fcd	0.1fcd

Intensities in 0° c-plane

0°	9°	18°	27°	36°	45°	54°	63°	72°	81°	90°	99°	108°	117°	126°	135°	144°	153°	162°	171°
298	296	287	269	244	211	170	121	47	1	1	1	1	92	144	189	226	255	276	290
100%	99%	96%	90%	82%	71%	57%	41%	16%	0%	0%	0%	0%	31%	48%	63%	76%	86%	93%	97%

Intensities in 90° c-plane

0°	9°	18°	27°	36°	45°	54°	63°	72°	81°	90°	99°	108°	117°	126°	135°	144°	153°	162°	171°
298	297	289	273	247	213	51	5	5	4	2	2	4	5	6	148	229	259	279	292
100%	100%	97%	92%	83%	72%	17%	2%	2%	1%	1%	1%	1%	2%	2%	50%	77%	87%	94%	98%

Intensities in 180° c-plane

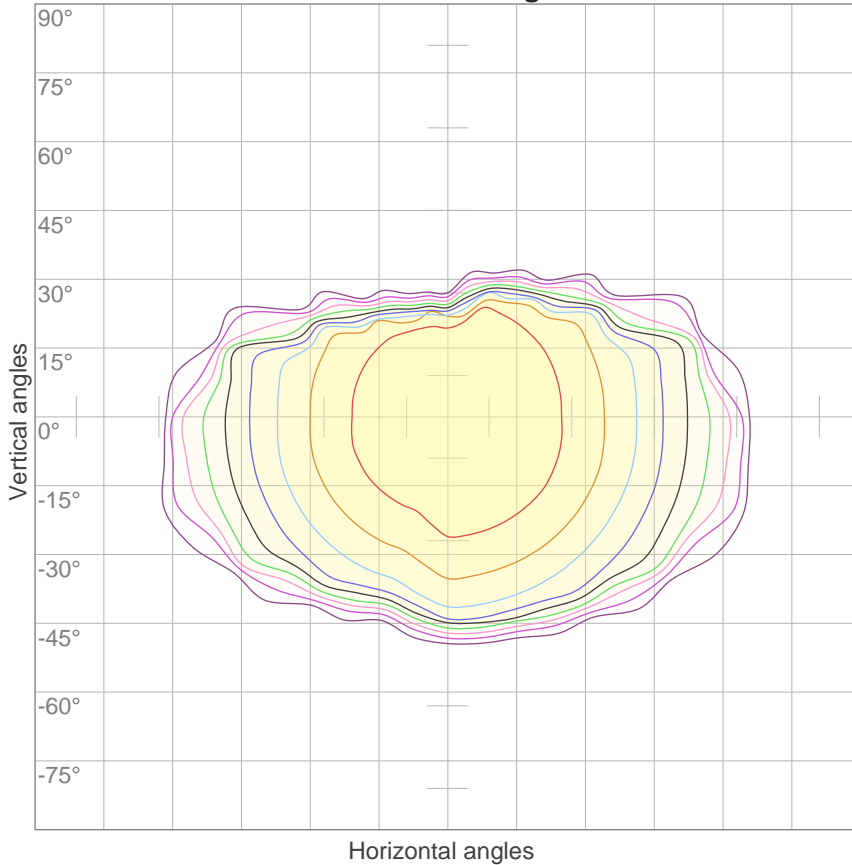
0°	9°	18°	27°	36°	45°	54°	63°	72°	81°	90°	99°	108°	117°	126°	135°	144°	153°	162°	171°
298	292	280	258	230	192	148	96	1	1	1	1	60	124	172	211	244	268	285	294
100%	98%	94%	87%	77%	64%	50%	32%	0%	0%	0%	0%	20%	42%	58%	71%	82%	90%	96%	99%

Intensities in 270° c-plane

0°	9°	18°	27°	36°	45°	54°	63°	72°	81°	90°	99°	108°	117°	126°	135°	144°	153°	162°	171°
298	293	280	129	2	1	1	1	1	1	1	1	1	1	1	2	15	261	287	295
100%	98%	94%	43%	1%	0%	0%	0%	0%	0%	0%	0%	0%	0%	0%	1%	5%	88%	96%	99%

Beam angle 50%	Field angle 10%	Cutoff angle 2,5%	Intensity ratio in 120° cone	Intensity ratio in 90° cone
360°	360°	360°	47.1%	36.5%

ISO candela diagram



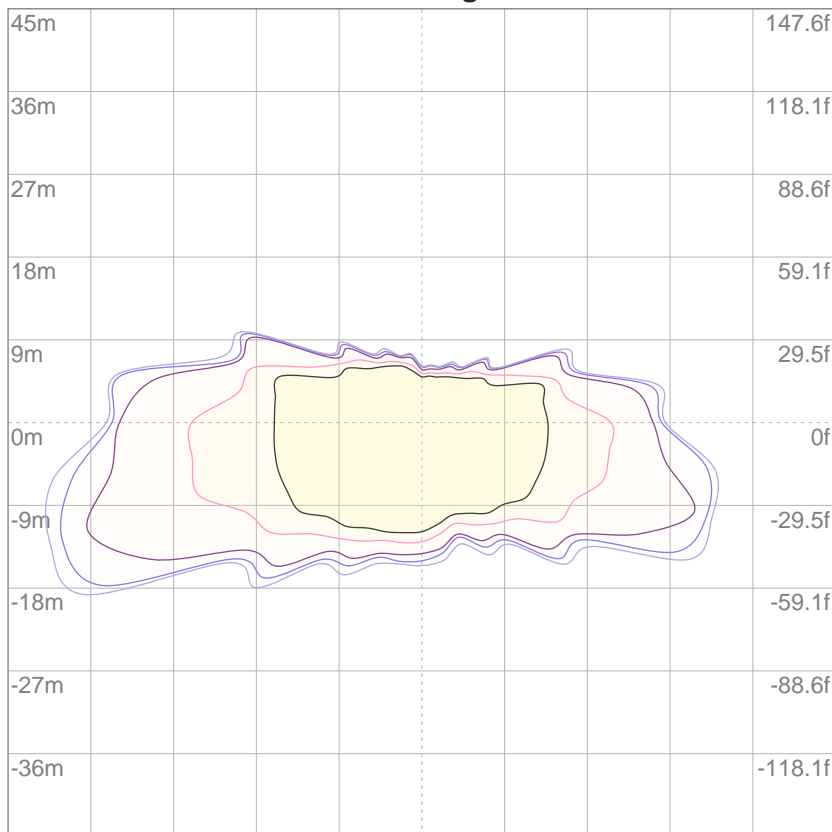
10%	30 cd
20%	60 cd
30%	89 cd
40%	119 cd
50%	149 cd
60%	179 cd
70%	209 cd
80%	238 cd
90%	268 cd

Conditions:

Number of c-planes: 20

Candela at center: 298 cd

ISO lux diagram



3%	89.4m lx
5%	0.149 lx
10%	0.298 lx
30%	0.894 lx
50%	1.49 lx

Conditions:

Number of c-planes: 20

Lux at center: 2.98 lx

Lux distribution on a surface when lamp is mounted at 10 meters from the surface.

