

JOB NAME _____

CONTACT _____

ORDERING CODE _____

GEOX TRACK ORDERING CODE		
SERIES	GEOX	3 circuit + 1 databus
TYPE	TRACK	linear track
SIZE	4L 8L	4' 8'
VOLTAGE	120	120V
FINISH	BK WH SV	black white silver
ACCESSORIES	See the last page for details.	

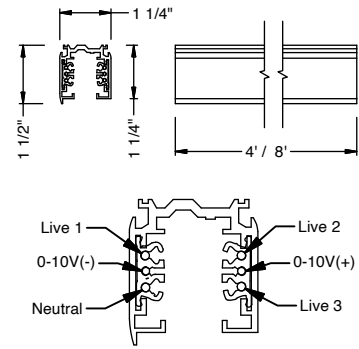
LM-79

GEO X Track



ORDERING CODE _____

Follow the steps to specify your fixture, example:
GEOX - TRACK - 4L - 120 - WH



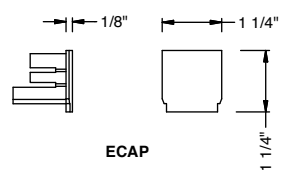
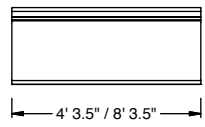
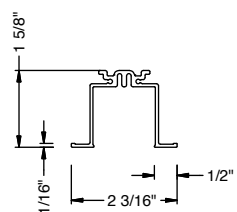
DESCRIPTION
GEO X is a lighting track system for use with BRUCK LX Track Spots that includes both 3 wire input voltage and a control data bus wire. Offered in black, white, or silver finish in a variety of lengths.

HOUSING
- Extruded aluminum, powder coated in white, black and silver.
- #12 gauge copper conductors co-extruded in PVC insulator.
- Suitable for dry locations only.

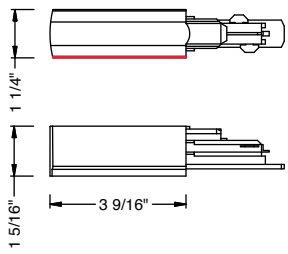
MOUNTING
- Surface mount
- Recessed with trimmed sleeve accessory, see page 2 for details.

ELECTRICAL/CONTROLS
- 3 circuit (3L+1N) + 1 databus (0-10V)
- Max 2400W, 20A per circuit
- 120V only

LISTINGS
- SGSusListed to UL 1574, cSGS listed to CSA C22.2 #9.0-96
- Suitable for dry locations only.



Polarity 1



Polarity 2



GEOX RECESSED JACKET ORDERING CODE

SERIES	GEOX	3 circuit + 1 databus
TYPE	TRACK-R	linear track, recessed
SIZE	4L ¹ 8L ¹	4' 8'
FINISH	BK WH SV	black white silver

ORDERING CODE _____

Follow the steps to specify your fixture, example:
GEOX - TRACK - R - 4L - WH

- Recessed profile kit for linear runs only.
- Trimmed finish in white, black or silver .
- Must be suspended via aircraft cable to structure above ceiling.

NOTES
1. Length code must match track length code.

GEOX END CAP ORDERING CODE

SERIES	GEOX	3 circuit + 1 databus
TYPE	ECAP RECAP ¹	end cap recessed end cap
FINISH	BK WH SV	black white silver

ORDERING CODE _____

Follow the steps to specify your fixture, example:
GEOX - RECAP - WH

- Recessed end cap does not have a finish option.

GEOX END FEED ORDERING CODE

SERIES	GEOX	3 circuit + 1 databus
TYPE	EFEED-1 EFEED-2	end feed, polarity 1 end feed, polarity 2
FINISH	BK WH SV	black white silver

ORDERING CODE _____

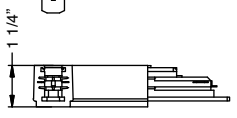
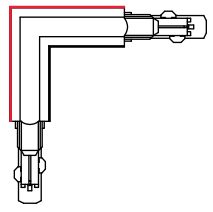
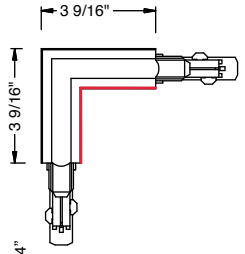
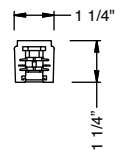
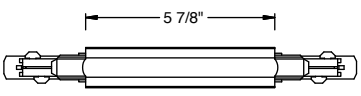
Follow the steps to specify your fixture, example:
GEOX - EFEED - 1 - WH

GEOX MIDDLE FEED CONNECTOR ORDERING CODE

SERIES	GEOX	3 circuit + 1 databus
TYPE	MFEED	middle feed connector
FINISH	BK WH SV	black white silver

ORDERING CODE _____

Follow the steps to specify your fixture, example:
GEOX - MFEED - WH



Inside Polarity

Outside Polarity

GEOX L FEED CONNECTOR ORDERING CODE

SERIES	GEOX	3 circuit + 1 databus
TYPE	LFEED-1 LFEED-2	L - feed connector, inside polarity L - feed connector, outside polarity
FINISH	BK WH SV	black white silver

ORDERING CODE _____

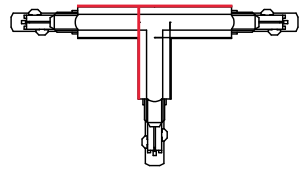
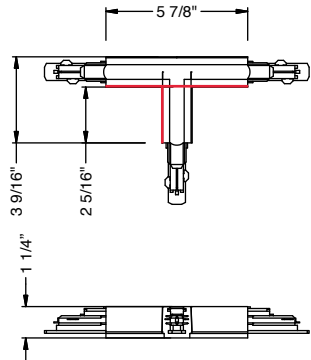
Follow the steps to specify your fixture, example:
GEOX - LFEED - 1 - WH

GEOX T FEED CONNECTOR ORDERING CODE

SERIES	GEOX	3 circuit + 1 databus
TYPE	TFEED-1L T - feed connector, left-inside polarity TFEED-2L T - feed connector, left-outside polarity TFEED-1R T - feed connector, right-inside polarity TFEED-2R T - feed connector, right-outside polarity	
FINISH	BK black WH white SV silver	

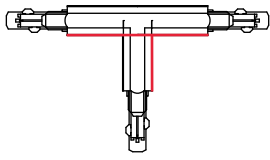
ORDERING CODE _____

Follow the steps to specify your fixture, example:
GEOX - TFEED - 1L - WH

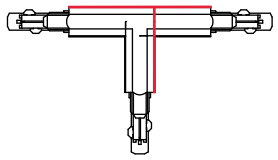


Left - Outside Polarity

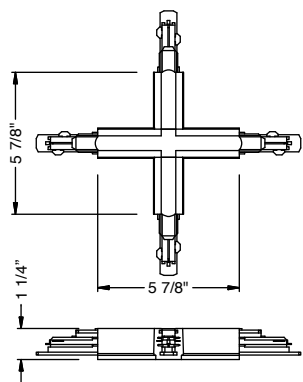
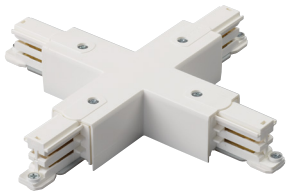
Left - Inside Polarity



Right - Inside Polarity



Right - Outside Polarity



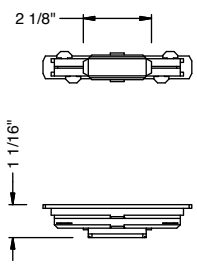
GEOX X FEED CONNECTOR ORDERING CODE

SERIES	GEOX	3 circuit + 1 databus
TYPE	XFEED	X - feed connector
FINISH	BK black WH white SV silver	

ORDERING CODE _____

Follow the steps to specify your fixture, example:
GEOX - XFEED - WH

GEOX COUPLER ORDERING CODE



SERIES	GEOX	3 circuit + 1 databus
TYPE	CPLR	track coupler
FINISH	BK WH SV	black white silver

ORDERING CODE _____

Follow the steps to specify your fixture, example:
GEOX - CPLR - WH

- Power pass through

ACCESSORIES

Surface Mount Accessories Ordering Code¹

- 380XTSV12** conductor tool for bending and measuring conductors when on-field cutting of track
- 380SKB12** ceiling mount clamp
- 380SKBT12²** 15/16" T-bar ceiling clamp
- 380SKBX12²** recessed 15/16" T-bar ceiling clamp
- 380GES15** junction box cover for all live and feedable connectors

NOTES

1. Complete code with finish WH, BK or SV except for 380XTSV12.
2. Only available in WH or BK.



380XTSV12



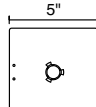
380SKB12



380SKBT12



380SKBX12



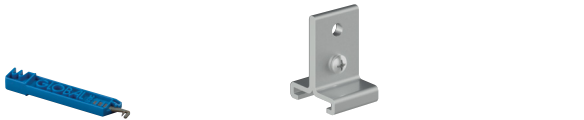
380GES15

Recessed Mount Accessories Ordering Code¹

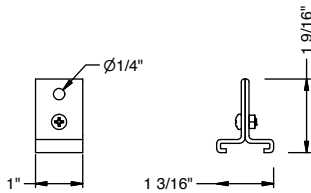
- 380XTSV12** conductor tool for bending and measuring conductors when on-field cutting of track
- 380SKB16^{1,2}** suspension bracket for looped aircraft cable
- 380SKB18^{1,2}** extended suspension bracket for looped aircraft cable

NOTES

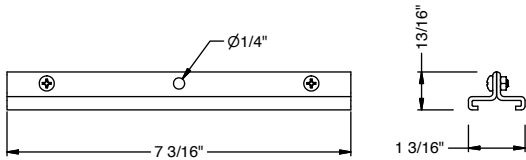
1. Complete code with finish WH, BK or SV.
2. Aircraft cable by others.



380XTSV12



380SKB16



380SKB18

Pendant Mount Accessories Ordering Code¹

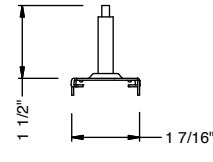
- 380XTSV12** conductor tool for bending and measuring conductors when on-field cutting of track
- 380SKB11WL** track mount clip for aircraft suspension
- 380SKB30²** ceiling cup
- 380SKB34** suspension wire, 5'
- 380SKB34/3M** suspension wire, 9'
- 380SP4R²** 1/4"-20 rod suspension point
- 380SP4P²** universal stem suspension point
- 380SPUS12^{2,3}** stem and canopy kit, 12"
- 380SPUS18^{2,3}** stem and canopy kit, 18"
- 380SPUS24^{2,3}** stem and canopy kit, 24"
- 380SPUS48^{2,3}** stem and canopy kit, 48"

NOTES

1. Complete code with finish WH, BK or SV except for 380SKB34 and 34.
2. Only available in WH or BK.
3. Stems are not field adjustable.



380XTSV12



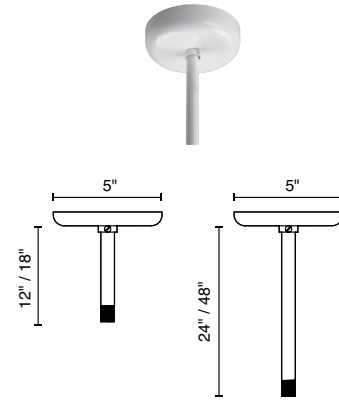
380SKB11WL



380SP4P



380SKB30



**380SPUS12, 380SPUS18,
380SPUS24, 380SPUS48**

DESIGN GUIDE

REFLECTED CEILING PLAN

