

## LX SERIES

### Pendant SMARTTrack Tunable White



BK

#### DESCRIPTION

- LX is a versatile series of performance spec-grade spots and cylinders. LX is rich in technology offering the best-in-class static and dynamic LED components, premium optics and dimming controls. Glare accessories and specialty optics are offered for all variations. Several Mounting options include nine track systems, monopoint spots and pendants, surface mount and conduit j-box cover with knockouts for open ceiling applications. It is offered in a fine detailed matte finish in black and white.

#### HOUSING

- Casted aluminum housing in textured: black and white.  
- Consult factory for custom finishes.

#### MOUNTING

- 48Vdc SMARTTrack systems, 48Vdc input (+/- 5%)  
- Flicker-free dimming using Bluetooth Low Energy (BLE) control (Casambi)  
- 0-10V hardwire control using SMARTTrack data bus

#### LISTING

- CSAus Listed to UL1574 (track suitable for dry locations only).  
- cCSA Listed to CSA C22.2 #9.0

#### LED INFO

- Luminus CTM (or equal) LED: SDCM = 4-step MacAdam Ellipse; Lumen Maintenance: L<sub>70</sub> > 54,000 hrs

#### PROJECT INFORMATION

JOB NAME		TYPE	
ORDERING CODE			

#### ORDERING CODE

<b>SERIES</b>	LX								
<b>TYPE</b>	35								
<b>LED</b>	TW tunable white (Luminus)								
<b>DELIVERED LUMENS</b>	<b>07LM</b> 590 lm, CBCP 3,890 <b>10LM</b> 670 lm, CBCP 3,130 <b>15LM</b> 900 lm, CBCP 3,250 <b>20LM</b> 1240 lm, CBCP 4,550 <small>Calculated Delivered Lumens = [Delivered Lumen Value] x [CCT Multiplier] x [Reflector Multiplier]                      Standard Configuration: 3500K 30D lumens, CBCP narrow beam option</small>								
<b>CCT</b>	<b>2765</b>	2700K to 6500K tunable white							
		CCT	2700K	3000K	3500K	4000K	5000K	5700K	6500K
		CCT MULTIPLIER FOR LUMEN OUTPUT	0.91	0.98	1.00	0.99	1.00	1.01	1.02
		EMLRATIO <sup>3</sup>	0.49	0.57	0.68	0.79	0.96	1.04	1.12
<b>CCT</b>	<b>1840</b>	1800K to 4000K tunable white							
		CCT	1800K	2000K	2400K	2700K	3000K	3500K	4000K
		CCT MULTIPLIER FOR LUMEN OUTPUT	0.67	0.74	0.8	0.85	0.88	0.95	1.01
		EMLRATIO	0.21	0.33	0.46	0.53	0.59	0.67	0.73
<b>CRI</b>	<b>95</b> 95 CRI max at 3500K, 90 CRI at 6500K								
<b>REFLECTOR &amp; LM MULTIPLIER</b>	<b>15D<sup>1</sup></b> 15 degrees (1.00) <b>20D</b> 20 degrees (0.99) <b>30D</b> 30 degrees (1.00) <b>40D</b> 40 degrees (0.99) <b>50D</b> 50 degrees (0.92) <b>LV<sup>2</sup></b> LensVector dynamic beam control 15° - 60° (0.80)								
<b>VOLTAGE</b>	<b>48</b> 48V								
<b>DIMMING</b>	<b>CASZ</b> Casambi Bluetooth dim to zero								
<b>MOUNTING OPTIONS</b>	<b>SMTPX</b> SMARTTrack pendant, X = desired cable length from 6" to 72"								
<b>FINISH</b>	<b>BK</b> black <b>WH</b> white								
<b>ACCESSORIES</b>	See page 3 for details.								

#### ORDERING CODE

Follow the steps to specify your fixture, example:  
**LX - 35 - TW - 20LM - 2765 - 95 - 20D - 48 - CASZ - SMTPX48 - WH**

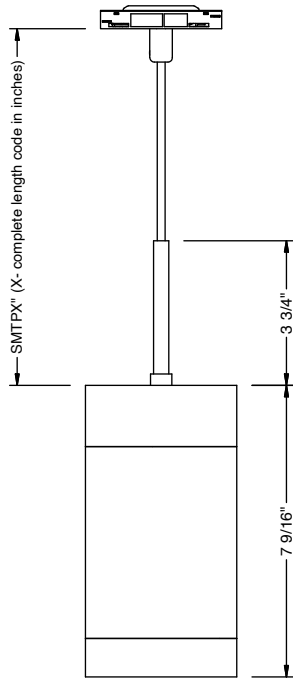
TW (LED)	POWER
DELIVERED LM	W (95 CRI)
590	15
670	13
900	19
1240	27

#### NOTES

- 15D only available in 07LM.
- LV only available in 07LM. Length of fixture increases by 1/8".
- EML = equivalent melanopic lux. To calculate EML, multiply the measured photopic lux by the EML ratio for the given CCT.  
Example: 254 lux x 0.79 = 200 melanopic lux at 4000K.

PROJECT INFORMATION			
JOB NAME		TYPE	
ORDERING CODE			

## MOUNTING OPTIONS



**SMT PENDANT**

PROJECT INFORMATION			
JOB NAME		TYPE	
ORDERING CODE			

## ACCESSORIES

### Accessories Ordering Codes<sup>1,2,3</sup>

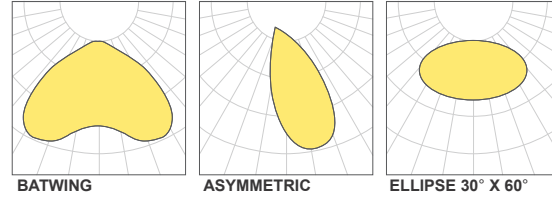
<b>HCL</b>	honeycomb louver (Cat. No. 81331)
<b>BDBK</b>	barndoor, black (Cat. No. K20278)
<b>SNTBK</b>	snoot, black (Cat. No. 81347BK)
<b>SNTWH</b>	snoot, white (Cat. No. 81347WH)
<b>SHNTBK</b>	shroud snoot, black (Cat. No. 81348BK)
<b>SHNTWH</b>	shroud snoot, white (Cat. No. 81348WH)
<b>E</b>	elliptical lens, 30° X 60° (Cat. No. 74258)
<b>SBL</b>	smoothing beam lens (Cat. No. 74207-SBL)
<b>DL</b>	diffused lens (Cat. No. 74207)
<b>BW</b>	batwing lens (Cat. No. 74259)

### NOTES

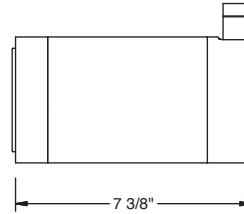
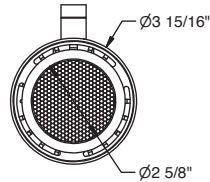
- Complete fixture ordering code by adding accessory ordering code. To order the accessory only use the catalog number.
- Maximum 2pcs of media per fixture. Standard Configuration includes clear lens, which is replaceable with other media.
- For best performance pair lenses with 15D or 20D beam options.

<b>AB</b>	asymmetric beam lens (Cat. No. 74261)
<b>HET</b>	high efficiency textured lens, similar to Solite™ (Cat. No. 74262)
<b>GRL</b>	glare reduction lens (Cat. No. 74257)
<b>CF-RD</b>	color filter - red (Cat. No. 74272-RD)
<b>CF-BL</b>	color filter - blue (Cat. No. 74272-BL)
<b>CF-GR</b>	color filter - green (Cat. No. 74272-GR)
<b>CF-AM</b>	color filter - amber (Cat. No. 74272-AM)
<b>81464</b>	bezel removal tool

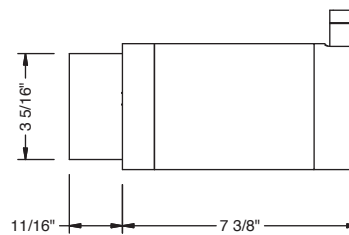
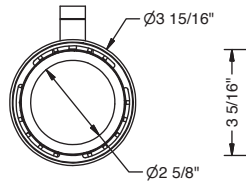
### LIGHT DISTRIBUTION



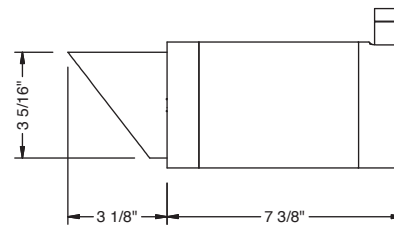
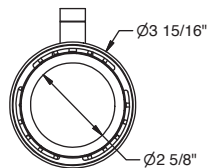
### HONEYCOMB LOUVER



### SNOOT



### SHROUD SNOOT



### BARNDOOR

