

LX SERIES

Track Pendant Standard White



DESCRIPTION

- LX is a versatile series of performance spec-grade spots and cylinders. LX is rich in technology offering the best-in-class static and dynamic LED components, premium optics and dimming controls. Glare accessories and specialty optics are offered for all variations. Several Mounting options include nine track systems, monopoint spots and pendants, surface mount and conduit j-box cover with knockouts for open ceiling applications. It is offered in a fine detailed matte finish in black and white.

HOUSING

- Casted aluminum housing in textured: black and white.
- Consult factory for custom finishes.

MOUNTING

- Global track systems, GEO track, ECO track / HALO® Power Trac track, Zonyx track, Juno® track, and Lightolier®.

LISTING

- CSAus Listed to UL1574 (track suitable for dry locations only)
- cCSA Listed to CSA C22.2 #9.0

LED INFO

- Cree CMT (or equal) LED: SDCM: 2-step MacAdam Ellipse, Lumen Maintenance: L₇₀ > 49,500 hrs

PROJECT INFORMATION			
JOB NAME		TYPE	
ORDERING CODE			

ORDERING CODE

SERIES	LX								
TYPE	35								
LED	SW	standard white							
DELIVERED LUMENS	10LM	990 lm, CBCP 17,010							
	15LM	1250 lm, CBCP 9,560							
	20LM	1730 lm, CBCP 12,290							
	25LM	2120 lm, CBCP 7,210							
	30LM	2510 lm, CBCP 8,530							
	35LM	2990 lm, CBCP 10,060							
	40LM	3360 lm, CBCP 11,170							
Calculated Delivered Lumens = [Delivered Lumen Value] x [CCT Multiplier] x [Optic Multiplier] Standard Configuration: 3000K 60D lumens, CBCP narrow beam option									
CCT	27K	2700K	CCT	2700K	3000K	3500K	4000K	5000K	
	30K	3000K		CCT MULTIPLIER FOR LUMEN OUTPUT	0.96	1	1.01	1.03	1.04
	35K	3500K							
	40K	4000K							
	50K	5000K							
CRI	90	90 CRI							
OPTICS & LM MULTIPLIER	10D ¹	10 degrees (1.00)							
	15D ²	15 degrees (1.00)							
	25D	25 degrees (0.99)							
	45D	45 degrees (0.97)							
	60D	60 degrees (1.00)							
	DZ1 ⁶	dynamic zoom 19° - 35° (0.92)							
	DZ2 ⁷	dynamic zoom 24° - 40° (0.89)							
LV ³	LensVector dynamic beam control 10° - 60° (0.80)								
VOLTAGE	120	120V							
DIMMING	CAS ELV1 ⁴	Casambi Bluetooth control with flicker free 1% dimming leading & trailing edge (Triac/ELV) dimming to 1%							
MOUNTING OPTIONS	ECOHPX	ECO/HALO pendant - single circuit							
	ECOJ/JUNO	ECOJ/JUNO pendant - single circuit							
FINISH	BK	black							
	WH	white							
	ACCESSORIES	See the last page for details.							

ORDERING CODE

Follow the steps to specify your fixture, example:
LX - 35 - SW - 40LM - 30K - 90 - 25D - 120 - CAS - ECOP48 - WH

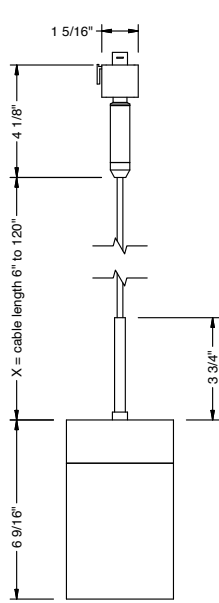
SW (LED)	POWER	
	DELIVERED LM	W (90 CRI)
990	10	99
1250	14	89
1730	18	96
2120	24	88
2510	29	87
2990	36	83
3360	42	80

NOTES

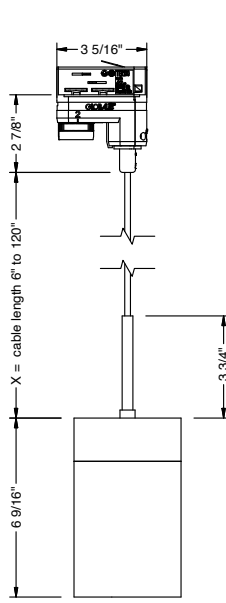
- 10D available only in 10LM.
- 15D available only in 10LM, 15LM and 20LM.
- LV available in 10LM with Casambi only. Length of fixture increases by 1-1/8".
- ELV/Triac available only in 120V.
- Zonyx track adapter available only in MC.
- Standard configuration: 3000K at max. 20LM. Only compatible with Snoot and Shroud accessories.
- Standard configuration: 3000K at max. 35LM. Only compatible with Snoot and Shroud accessories.

PROJECT INFORMATION		
JOB NAME		TYPE
ORDERING CODE		

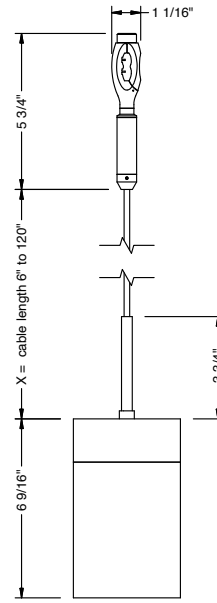
MOUNTING OPTIONS



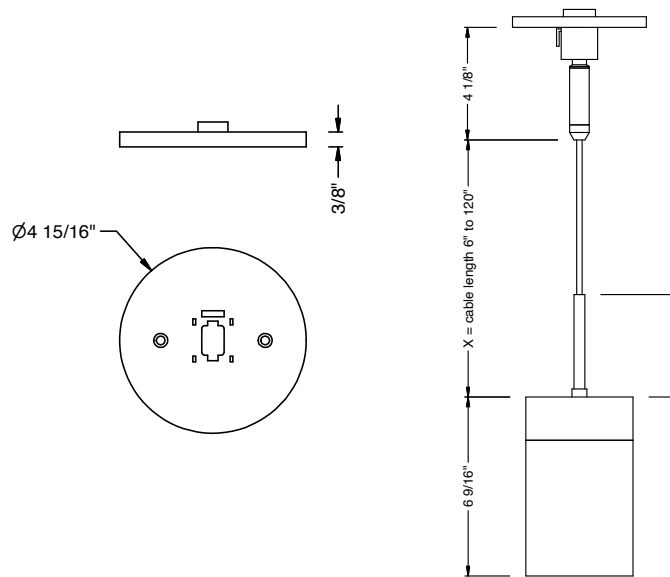
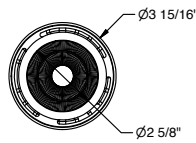
**CABLE PENDANT
E/H, J and L TYPE**



**CABLE PENDANT
GEO**



**CABLE PENDANT
ZONYX**



**ECO MONOPOINT
PENDANT CANOPY**

PROJECT INFORMATION

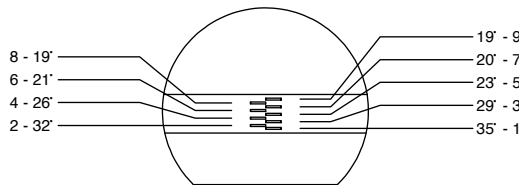
JOB NAME		TYPE	
ORDERING CODE			

DYNAMIC ZOOM

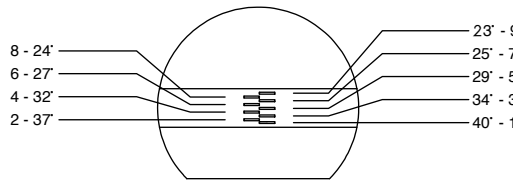


LX MECHANICAL ZOOM

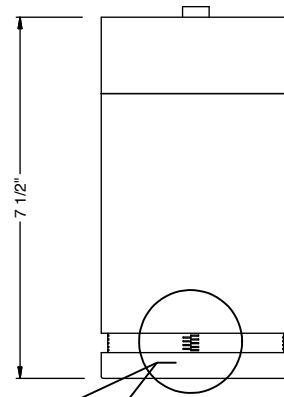
SW (LED)				
ZOOM	POSITION	CBCP	LUMENS	BEAM
DZ1	1	4060	1600	35
	2	4620	1590	32
	3	5470	1590	29
	4	6320	1570	26
	5	7170	1550	23
	6	8070	1520	21
	7	8520	1400	20
	8	8690	1440	19
	9	8560	1410	19
ZOOM	POSITION	CBCP	LUMENS	BEAM
DZ2	1	5790	2680	40
	2	6360	2660	37
	3	7180	2640	34
	4	8200	2600	32
	5	9030	2630	29
	6	9600	2450	27
	7	9840	2490	25
	8	9860	2410	24
	9	9660	2210	23



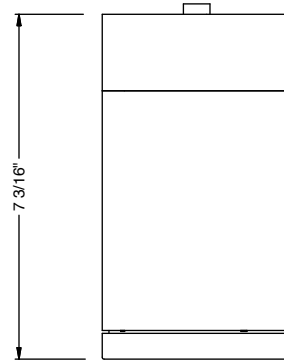
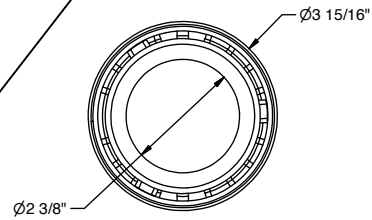
DZ1 (19° - 35°)



DZ2 (23° - 40°)



Narrow - Position



Wide - Position

PROJECT INFORMATION

JOB NAME		TYPE	
ORDERING CODE			

ACCESSORIES

Accessories Ordering Codes 1,2,3

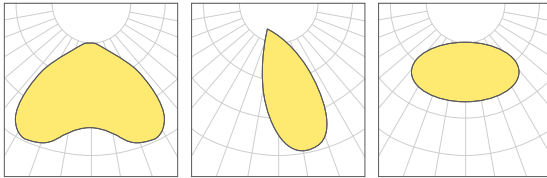
HCL	honeycomb louver (Cat. No. 81331)
BDBK	barndoor, black (Cat. No. K20278)
SNTBK	snoot, black (Cat. No. 81347BK)
SNTWH	snoot, white (Cat. No. 81347WH)
SHNTBK	shroud snoot, black (Cat. No. 81348BK)
SHNTWH	shroud snoot, white (Cat. No. 81348WH)
E	elliptical lens, 30° X 60° (Cat. No 74258)
SBL	smoothing Beam lens (Cat. No 74207-SBL)
DL	diffused lens (Cat. No 74207)
BW	batwing lens (Cat. No 74259)

AB	asymmetric beam lens (Cat. No 74261)
HET	high efficiency textured lens, similar to Solite™ (Cat. No. 74262)
GRL	glare reduction lens (Cat. No. 74257)
CF-RD	color filter - red (Cat. No 74272-RD)
CF-BL	color filter - blue (Cat. No 74272-BL)
CF-GR	color filter - green (Cat. No 74272-GR)
CF-AM	color filter - amber (Cat. No 74272-AM)
81464	bezel removal tool
370GES70BK	ECO canopy round, black
370GES70WH	ECO canopy round, white

NOTES

1. Complete fixture ordering code by adding accessory ordering code. To order the accessory only use the catalog number.
2. Maximum 2pcs of media per fixture.
3. For best performance pair lenses with 10D, 15D or 25D beam options.

LIGHT DISTRIBUTION

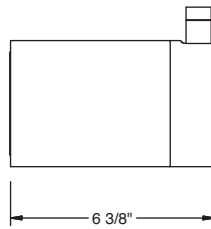
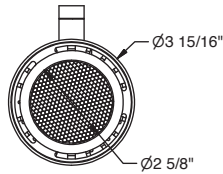


BATWING ASYMMETRIC ELLIPSE 30° X 60°

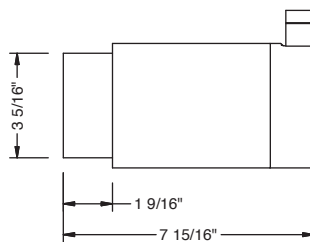
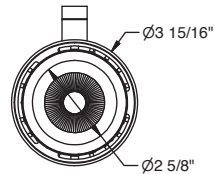
HONEYCOMB LOUVER



SNOOT



SHROUD SNOOT



BARNDOOR

