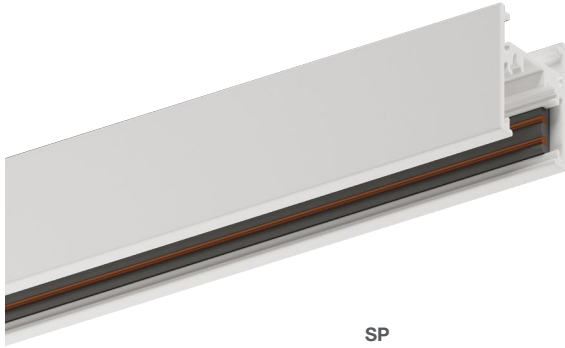


MEVO Pendant Surface

Multisystem EVO track by Stucchi



SP

FEATURES

- MEVO is a 1 circuit + Data Bus track system for use with a variety of BRUCK products. Offered in black or white finish in a variety of lengths.

HOUSING

- Extruded aluminum, powder coat in white and black.
- #12 gauge copper conductors co-extruded in PVC insulator.

MOUNTING

- Pendant Mount: Aircraft cable and rigid stem
- Surface mount

ELECTRICAL/CONTROLS

- 1 circuit (48Vdc +/-) rated to 15A + DataBus (0-10V)
- 48V only

LISTING

- ULListed to UL 1574, UL listed to CSA C22.2 #250.570
- Suitable for dry locations only.

PROJECT INFORMATION

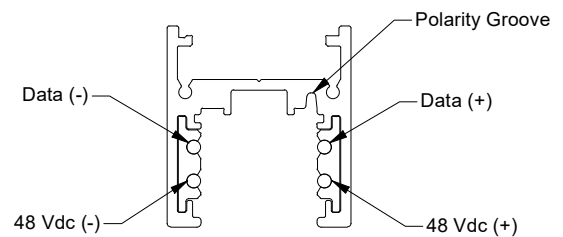
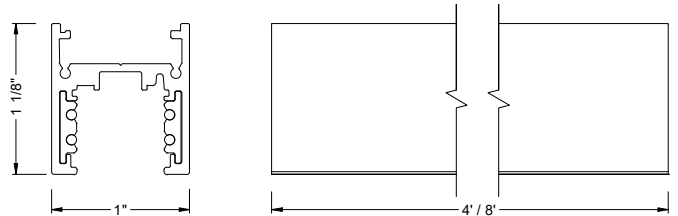
JOB NAME		TYPE	
ORDERING CODE			

ORDERING CODE

SERIES	MEVO	stucchi multisystem track, 1 circuit + databus	
TYPE	TRACK-SP	linear track, surface or pendant	
SIZE	4L 8L	4' 8'	
VOLTAGE	48	48V	
FINISH	BK WH	black white	

ORDERING CODE

Follow the steps to specify your fixture, example:
MEVO - TRACK-SP - 4L - 48 - WH



TRACK-SP

PROJECT INFORMATION			
JOB NAME		TYPE	
ORDERING CODE			

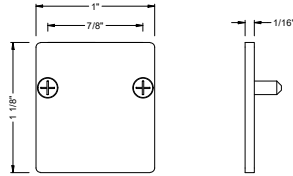
MEVO END CAP ORDERING CODE

SERIES	MEVO	stucchi multisystem track, 1 circuit + databus
TYPE	ECSP ECHSP	end cap, surface or pendant end cap with cable hole, surface or pendant
FINISH	BK WH	black white

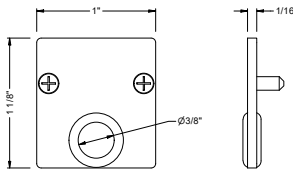
ORDERING CODE

Follow the steps to specify your fixture, example:
MEVO - ECSP - WH

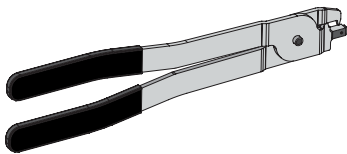
- MEVO end cap offered in white and black.



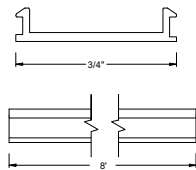
ECSP



ECHSP



TRACK CONDUCTOR CUTTING TOOL



TRACK COVERS

MEVO ACCESSORIES ORDERING CODE

SERIES	MEVO	stucchi multisystem track, 1 circuit + databus
TYPE	C T ¹	cover for tracks Track Conductor Cutting Tool
SIZE	8L	8'
FINISH	BK WH	black white

ORDERING CODE

Follow the steps to specify your fixture, example:
MEVO - C - 8L - WH

- For surface, pendant and recessed trim & trimless MEVO tracks
- Field cuttable

NOTES

1. T option not available in size and finish.

PROJECT INFORMATION

JOB NAME		TYPE	
ORDERING CODE			

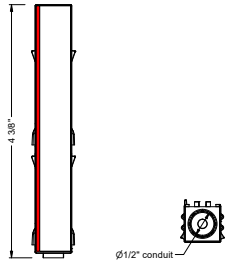
MEVO END FEED ORDERING CODE

SERIES	MEVO	stucchi multisystem track, 1 circuit + databus
TYPE	EFEED-1	end feed, polarity 1
	EFEED-2	end feed, polarity 2
FINISH	WH	white
	BK	black

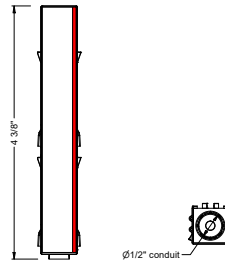
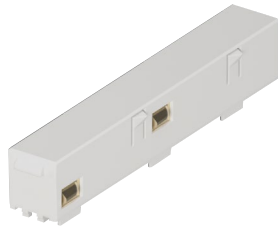
ORDERING CODE

Follow the steps to specify your fixture, example:
MEVO - EFEED-1 - WH

- Power end feed for MEVO track, offered in white and black
- Offered in two polarity options.



EFEED-1
end feed, polarity 1



EFEED-2
end feed, polarity 2

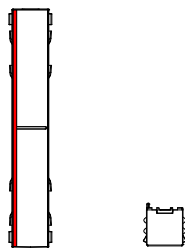
MEVO JOINTING FEED CONNECTOR ORDERING CODE

SERIES	MEVO	stucchi multisystem track, 1 circuit + databus
TYPE	JFEED	jointing feed connector, pass through
	JNFEED	jointing non-feed connector
FINISH	BK	black
	WH	white

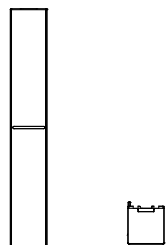
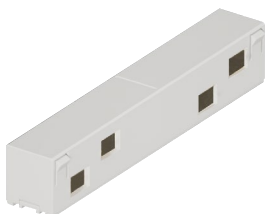
ORDERING CODE

Follow the steps to specify your fixture, example:
MEVO - JFEED - WH

- Middle connector - joins two MEVO track runs.
- Offered in white and black.



JFEED



JNFEED

PROJECT INFORMATION

JOB NAME		TYPE	
ORDERING CODE			

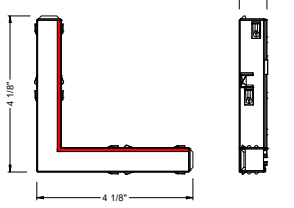
MEVO L FEED CONNECTOR ORDERING CODE

SERIES	MEVO	stucchi multisystem track, 1 circuit + databus
TYPE	LFEED-1 LFEED-2	L - feed connector, inside polarity L - feed connector, outside polarity
FINISH	BK WH	black white

ORDERING CODE

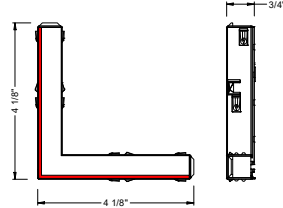
Follow the steps to specify your fixture, example:
MEVO - LFEED-1 - WH

- L connector - joins two MEVO tracks in a right angle. Offered in white and black.
- Offered in two polarity options.



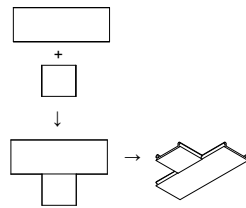
LFEED-1

L - feed connector, inside polarity



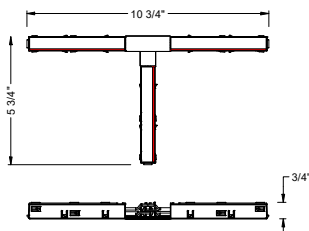
LFEED-2

L - feed connector, outside polarity



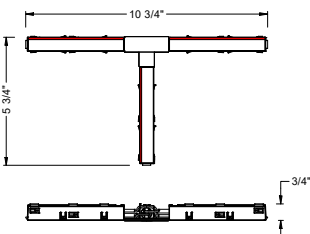
TFEED-1L

T - feed connector, left-inside polarity



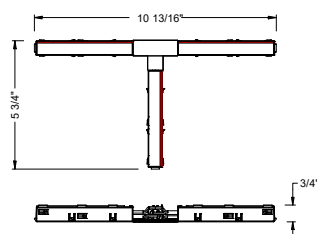
TFEED-1R

T - feed connector, right-inside polarity



TFEED-2L

T - feed connector, left-outside polarity



TFEED-2R

T - feed connector, right-outside polarity

MEVO T FEED CONNECTOR ORDERING CODE

SERIES	MEVO	stucchi multisystem track, 1 circuit + databus
TYPE	TFEED-1L TFEED-1R TFEED-2L TFEED-2R	T - feed connector, left-inside polarity T - feed connector, right-inside polarity T - feed connector, left-outside polarity T - feed connector, right-outside polarity
FINISH	BK WH	black white

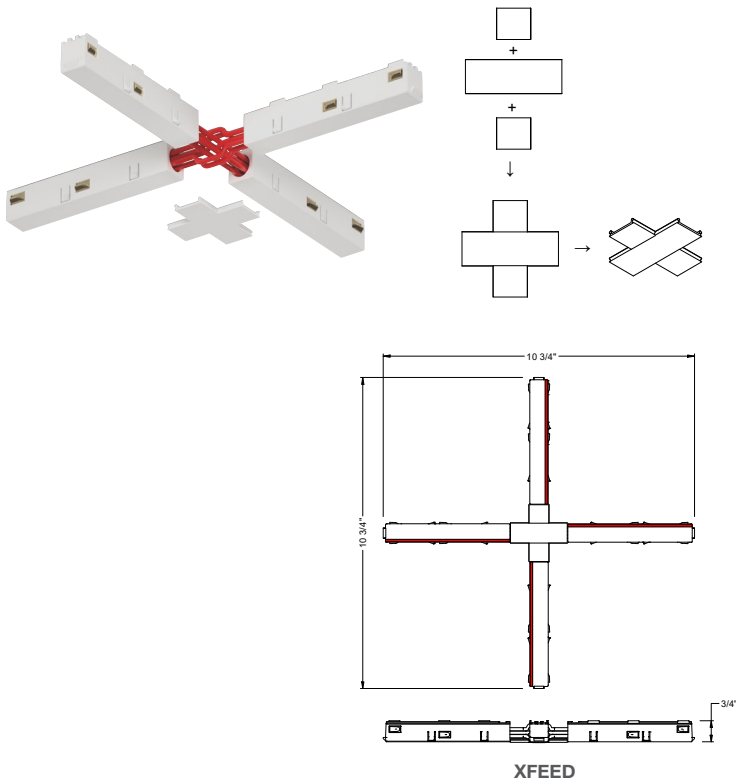
ORDERING CODE

Follow the steps to specify your fixture, example:
MEVO - TFEED-1R - WH

- T connector - joins three MEVO tracks in T configuration. Offered in white and black.
- Offered in four configurations / two polarity options.

PROJECT INFORMATION

JOB NAME		TYPE	
ORDERING CODE			



MEVO X FEED CONNECTOR ORDERING CODE

SERIES	MEVO	stucchi multisystem track, 1 circuit + databus
TYPE	XFEED	X - feed connector
FINISH	BK WH	black white

ORDERING CODE

Follow the steps to specify your fixture, example:
MEVO - XFEED - WH

- X connector - joins four MEVO tracks in a X configuration.
- Offered in white and black.
- Power pass through in all directions

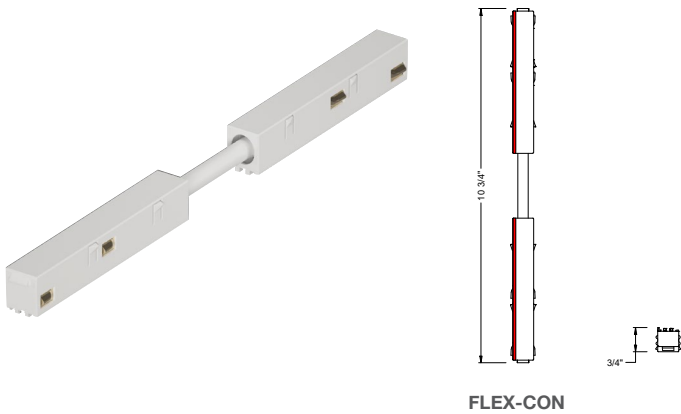
MEVO ADJUSTABLE CORNER FEED ORDERING CODE

SERIES	MEVO	stucchi multisystem track, 1 circuit + databus
TYPE	FLEX-CON	flexible connector
FINISH	BK WH	black white

ORDERING CODE

Follow the steps to specify your fixture, example:
MEVO - FLEX-CON - WH

- Adjustable corner feed joins two MEVO tracks from 0° up to 90°. Offered in white and black.
- Power pass through.



PROJECT INFORMATION

JOB NAME		TYPE	
ORDERING CODE			

MEVO TRACK JOINING ACCESSORIES ORDERING CODE

SERIES	MEVO	stucchi multisystem track, 1 circuit + databus
TYPE	LB-SP¹ LJOINT-SP TJOINT-SP XJOINT-SP	L bracket for angles, surface or pendant L - joint, surface or pendant T - joint, surface or pendant X - joint for surface or pendant
FINISH	BK WH	black white

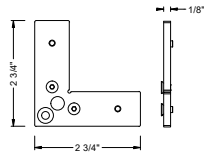
ORDERING CODE

Follow the steps to specify your fixture, example:
MEVO - LJOINT-SP - WH

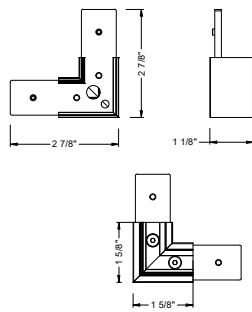
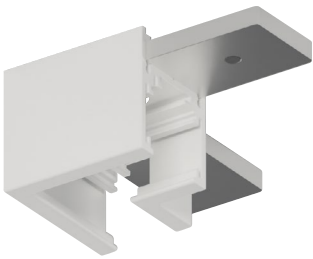
- Track Joining Accessories - joins MEVO track runs. Offered in white and black.

NOTES

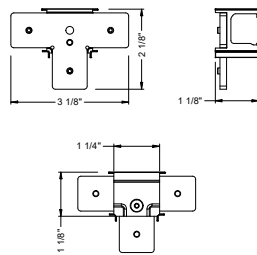
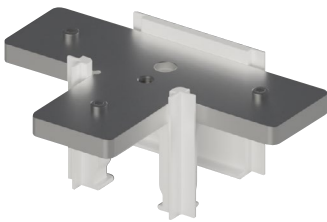
1. Finishes not available.



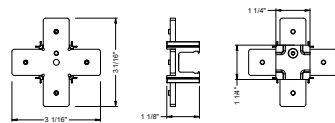
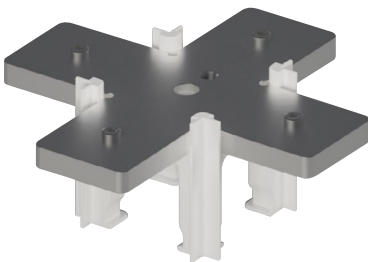
LB-SP



LJOINT-SP



TJOINT-SP



XJOINT-SP

PROJECT INFORMATION

JOB NAME		TYPE	
ORDERING CODE			

MEVO MOUNTING - TRACK-SP ORDERING CODE

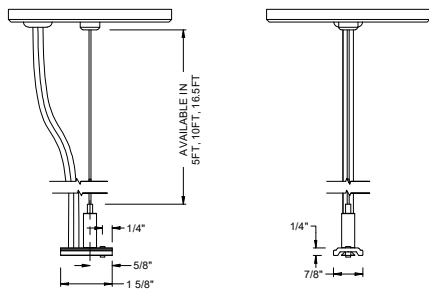
SERIES	MEVO	stucchi multisystem track, 1 circuit + databus
MOUNTING OPTIONS	AC-S1-5 aircraft cable, suspension kit-1, 5FT AC-S1-10 aircraft cable, suspension kit-1, 10FT AC-S1-15 aircraft cable, suspension kit-1, 16.5FT AC-S2-5 aircraft cable, suspension kit-2, 5FT AC-S2-10 aircraft cable, suspension kit-2, 10FT AC-S2-15 aircraft cable, suspension kit-2, 16.5FT RP-S1' rigid pendant, suspension kit-1 CC-T ceiling clamp, surface or pendant track LPB-M6 long pendant bracket for suspension, M6	
FINISH	BK² black WH² white	

ORDERING CODE

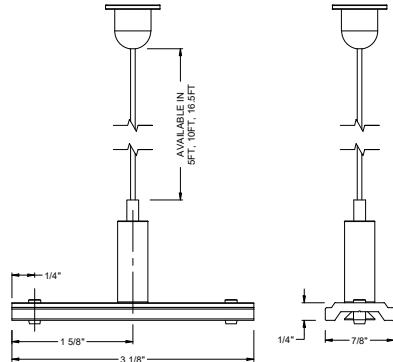
Follow the steps to specify your fixture, example:
MEVO - AC-S1-5

NOTES

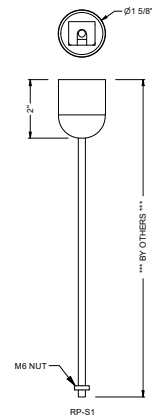
1. Stem by others.
2. Finishes available only with RP-S1, CC-T type mounting options.



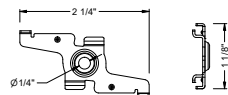
AC-S1



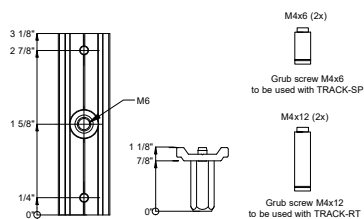
AC-S2



RP-S1



CC-T

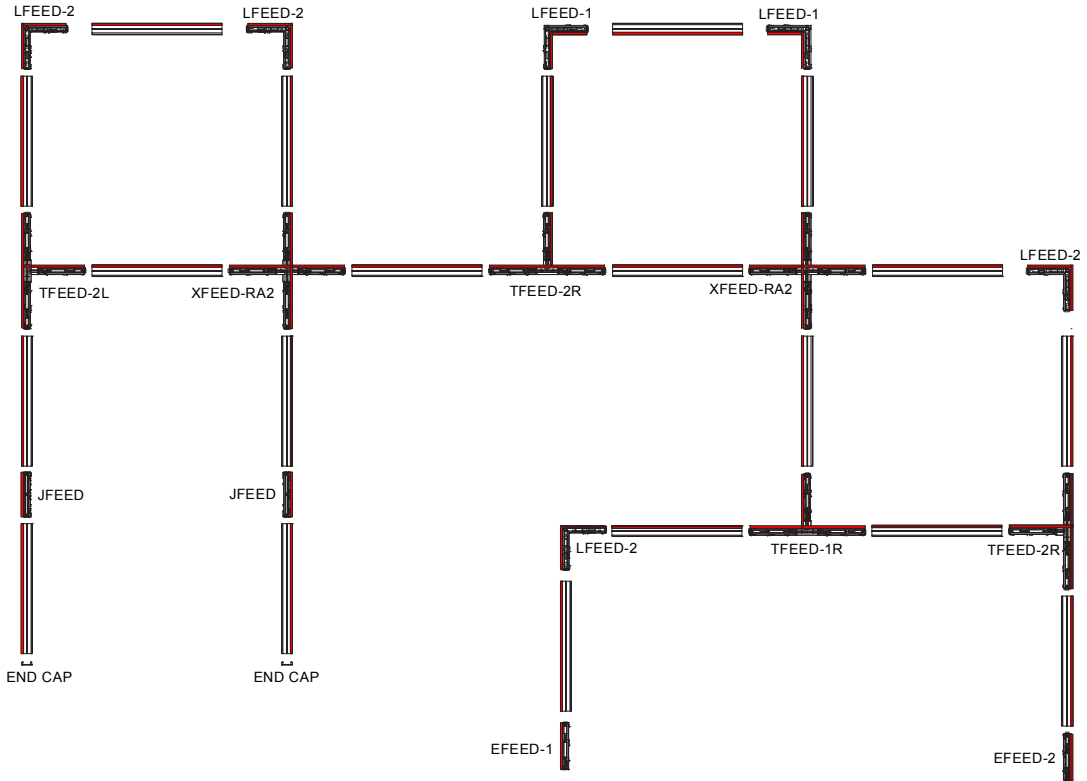


LPB-M6

PROJECT INFORMATION			
JOB NAME		TYPE	
ORDERING CODE			

DESIGN GUIDE

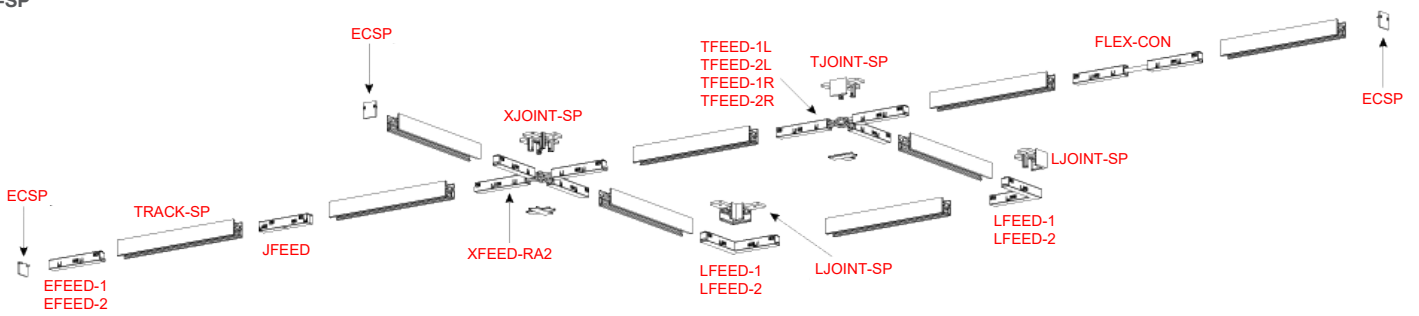
REFLECTED CEILING PLAN



Note:
Design guide for reference only.
End feed to be chosen based on polarity layout design. Do not use two different end feeds for single circuit.

MOUNTING SCHEME

TRACK-SP



PROJECT INFORMATION			
JOB NAME		TYPE	
ORDERING CODE			

POWER SUPPLY

MEVO 60W 96W Power Supply

Description

- Compact, high power density, efficient constant-voltage power supply with metal enclosure
- Universal 120-277 Vac input, 48 Vdc output
- IP20-rated case with silicone-based potting
- Lifetime: 50,000 hours min at 70°C case temperature
- Thermal protection
- Under-voltage, short circuit and over-current protection
- No minimum load requirement

Product Compatibility

- 48V fixtures

Technical Specs

- 120/277 Vac, 60 Hz input*
- 50°C maximum ambient temperature
- Class 2 rated
- 48 Vdc output
- Isolated input and output with Class II reinforced/double insulation
- Power factor > 0.9

Additional Technical Specs

- | | |
|---|--|
| 60W: | - 96W: |
| - 1.25A max. output current
up to 90% efficiency | - 2A max. output current
up to 92% efficiency |
| - Remote distance with 12AWG: 180 ft (55 m) | - Remote distance with 12AWG: 115 ft (35 m) |

Listings

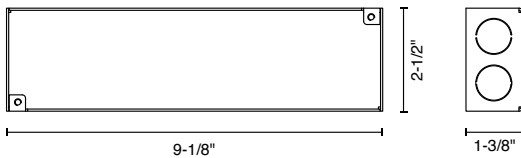
- UL 8750 Listed, Class 2
- CAN/CSA C22.2 No. 250.13-14 LED equipment for lighting applications



ORDERING CODES

Follow the steps to specify your fixture, example: P70514 - 48 - 60

Part Number	Voltage	Wattage
P70514	48 48V	60 60W 96 96W



Standard Enclosure

VOLTAGE DROP TABLE

POWER SUPPLY	A -Distance Power Supply/Feed Unit (2 x 1.5mm ² - 2 x AWG16)			
	5m [16.4']	10m [32.8']	20m [65.6']	30m [98.4']
	B -Track Length with Δ v ≤ 5.5%			
60 w	50m [164']	50m [164']	50m [164']	50m [164']
96 w	50m [164']	50m [164']	40m [131']	25m [82']

Information refers to a load equivalent to the power supplied and equally distributed on the relevant length in the table.

PROJECT INFORMATION			
JOB NAME		TYPE	
ORDERING CODE			

POWER SUPPLY

MEVO 260W Power Supply

Description

- Compact, high power density, efficient constant-voltage power supply with metal enclosure
- Universal 120-277Vac input, 48Vdc output
- Complies with ENERGY STAR®, DLC (DesignLight Consortium®) and CA Title 24 technical requirements
- IP66-rated case with silicone-based potting
- Lifetime: 50,000 hours min at 70°C case temperature
- Thermal protection
- Under-voltage, short circuit and over-current protection
- No minimum load requirement

Product Compatibility

- 48V fixtures

Technical Specs

- 120/277Vac, 60Hz input
- 50°C maximum ambient temperature
- 48Vdc output
- Class I (with earth ground) input to output isolation
- Power factor > 0.9
- THD < 20% (from 60% to 100% of rated power)
- 5.4A max. output current
- Up to 93% efficiency
- Remote distance with 12AWG: 42 ft (12.8 m)

Listings

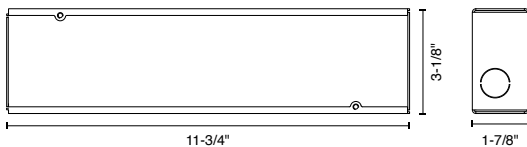
- UL 8750 Listed, Class 2
- CAN/CSA C22.2 No. 250.13-14 LED equipment for lighting applications



ORDERING CODES

Follow the steps to specify your fixture, example: P70514 - 48 - 260

Part Number	Voltage	Wattage
P70514	48 48V	260 260W



Standard Enclosure

VOLTAGE DROP TABLE

POWER SUPPLY	A -Distance Power Supply/Feed Unit (2 x 1.5mm ² - 2 x AWG16)			
	5m [16.4']	10m [32.8']	20m [65.6']	30m [98.4']
B -Track Length with Δv ≤ 5.5%				
260 w	35m [115']	20m [66']	not admitted	not admitted

Information refers to a load equivalent to the power supplied and equally distributed on the relevant length in the table.