

MEVO Recessed Trimmed

Multisystem EVO track by Stucchi



RT

FEATURES

- MEVO is a 1 circuit + Data Bus track system for use with a variety of BRUCK products.
- Offered in black or white finish in a variety of lengths.

HOUSING

- Extruded aluminum, powder coat in white and black.
- #12 gauge copper conductors co-extruded in PVC insulator.

MOUNTING

- Recessed Mount: Trimmed with Aircraft cable and rigid stem

ELECTRICAL/CONTROLS

- 1 circuit (48Vdc +/-) rated to 15A + DataBus (0-10V)
- 48V only

LISTING

- ULListed to UL 1574, UL listed to CSA C22.2 #250.570
- Suitable for dry locations only.

PROJECT INFORMATION

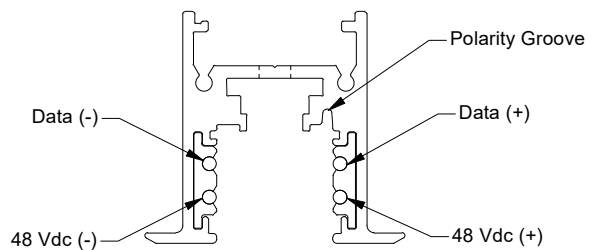
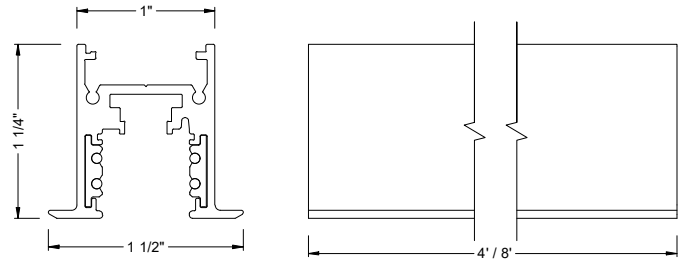
JOB NAME		TYPE	
ORDERING CODE			

ORDERING CODE

SERIES	MEVO	stucchi multisystem track, 1 circuit + databus	
TYPE	TRACK-RT	linear track, recessed trim	
SIZE	4L	4'	
	8L	8'	
VOLTAGE	48	48V	
FINISH	BK	black	
	WH	white	

ORDERING CODE

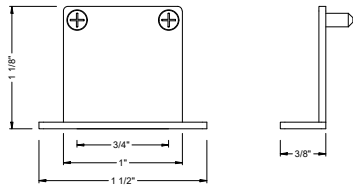
Follow the steps to specify your fixture, example:
MEVO - TRACK-RT - 4L - 48 - WH



TRACK-RT

PROJECT INFORMATION

JOB NAME		TYPE	
ORDERING CODE			



ECRT

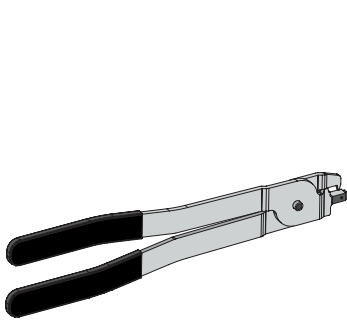
MEVO END CAP ORDERING CODE

SERIES	MEVO	stucchi multisystem track, 1 circuit + databus
TYPE	ECRT	end cap, recessed trim
FINISH	BK WH	black white

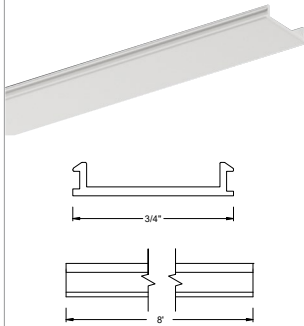
ORDERING CODE

Follow the steps to specify your fixture, example:
MEVO - ECRT - WH

- MEVO end cap offered in white and black.



TRACK CONDUCTOR CUTTING TOOL



TRACK COVERS

MEVO ACCESSORIES ORDERING CODE

SERIES	MEVO	stucchi multisystem track, 1 circuit + databus
TYPE	C T ¹	cover for tracks Track Conductor Cutting Tool
SIZE	8L	8'
FINISH	BK WH	black white

ORDERING CODE

Follow the steps to specify your fixture, example:
MEVO - C - 8L - WH

- For surface, pendant and recessed trim & trimless MEVO tracks
- Field cuttable

NOTES

1. T option not available in size and finish.

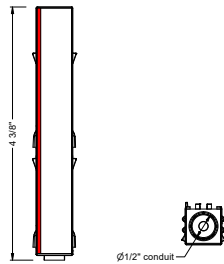
MEVO END FEED ORDERING CODE

SERIES	MEVO	stucchi multisystem track, 1 circuit + databus
TYPE	EFEED-1 EFEED-2	end feed, polarity 1 end feed, polarity 2
FINISH	BK WH	black white

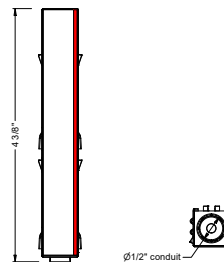
ORDERING CODE

Follow the steps to specify your fixture, example:
MEVO - EFEED-1 - WH

- Power end feed for MEVO track, offered in white and black
- Offered in two polarity options.



EFEED-1
end feed, polarity 1



EFEED-2
end feed, polarity 2

PROJECT INFORMATION			
JOB NAME		TYPE	
ORDERING CODE			

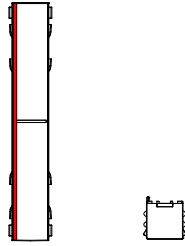
MEVO JOINTING FEED CONNECTOR ORDERING CODE

SERIES	MEVO	stucchi multisystem track, 1 circuit + databus
TYPE	JFEED JNFEED	jointing feed connector, pass through jointing non-feed connector
FINISH	BK WH	black white

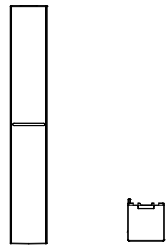
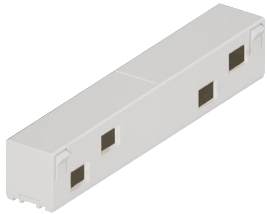
ORDERING CODE

Follow the steps to specify your fixture, example:
MEVO - JFEED - WH

- Middle connector - joins two MEVO track runs.
- Offered in white and black.



JFEED



JNFEED

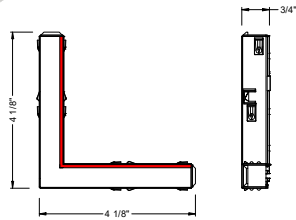
MEVO L FEED CONNECTOR ORDERING CODE

SERIES	MEVO	stucchi multisystem track, 1 circuit + databus
TYPE	LFEED-1 LFEED-2	L - feed connector, inside polarity L - feed connector, outside polarity
FINISH	BK WH	black white

ORDERING CODE

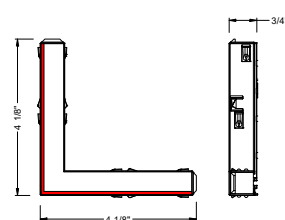
Follow the steps to specify your fixture, example:
MEVO - LFEED-1 - WH

- L connector - joins two MEVO tracks in a right angle. Offered in white and black.
- Offered in two polarity options.



LFEED-1

L - feed connector, inside polarity



LFEED-2

L - feed connector, outside polarity

PROJECT INFORMATION

JOB NAME		TYPE	
ORDERING CODE			

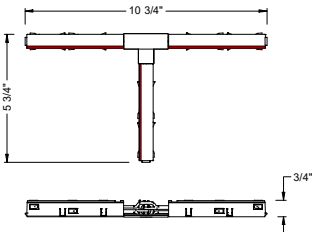
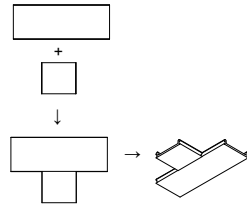
MEVO T FEED CONNECTOR ORDERING CODE

SERIES	MEVO	stucchi multisystem track, 1 circuit + databus
TYPE	TFEED-1L TFEED-2L TFEED-1R TFEED-2R	T - feed connector, left-inside polarity T - feed connector, left-outside polarity T - feed connector, right-inside polarity T - feed connector, right-outside polarity
FINISH	BK WH	black white

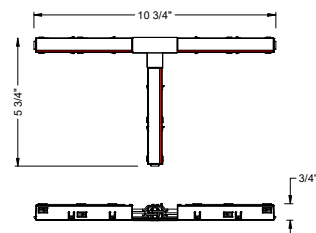
ORDERING CODE

Follow the steps to specify your fixture, example:
MEVO - TFEED-1R - WH

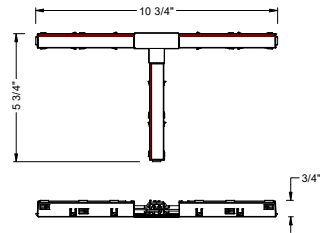
- T connector - joins three MEVO tracks in T configuration. Offered in white and black.
- Offered in four configurations / two polarity options.



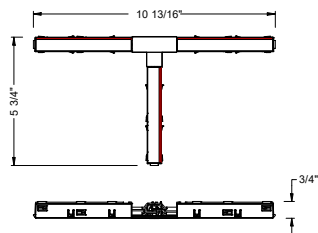
TFEED-1L
T - feed connector, left-inside polarity



TFEED-1R
T - feed connector, right-inside polarity

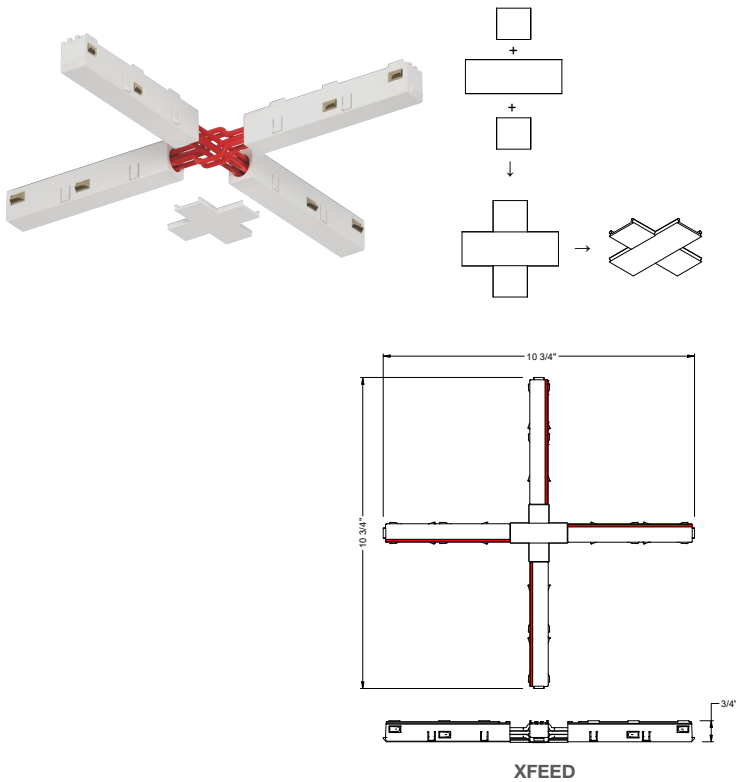


TFEED-2L
T - feed connector, left-outside polarity



TFEED-2R
T - feed connector, right-outside polarity

PROJECT INFORMATION			
JOB NAME		TYPE	
ORDERING CODE			



MEVO X FEED CONNECTOR ORDERING CODE

SERIES	MEVO	stucchi multisystem track, 1 circuit + databus
TYPE	XFEED	X - feed connector
FINISH	BK WH	black white

ORDERING CODE _____

Follow the steps to specify your fixture, example:
MEVO - XFEED - WH

- X connector - joins four MEVO tracks in a X configuration.
- Offered in white and black.
- Power pass through in all directions

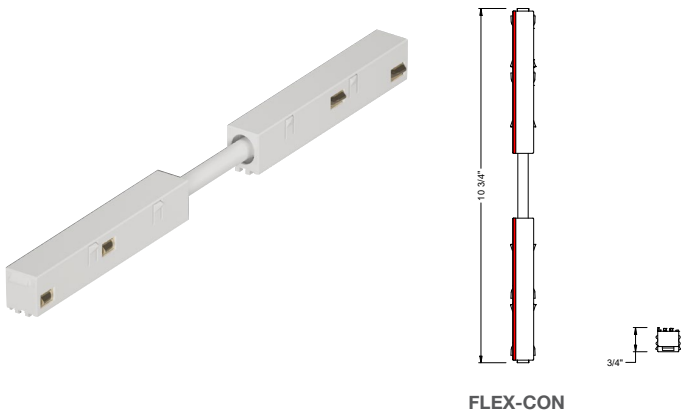
MEVO ADJUSTABLE CORNER FEED ORDERING CODE

SERIES	MEVO	stucchi multisystem track, 1 circuit + databus
TYPE	FLEX-CON	flexible connector
FINISH	BK WH	black white

ORDERING CODE _____

Follow the steps to specify your fixture, example:
MEVO - FLEX-CON - WH

- Adjustable corner feed joins two MEVO tracks from 0° up to 90°. Offered in white and black.
- Power pass through.



PROJECT INFORMATION

JOB NAME		TYPE	
ORDERING CODE			

MEVO TRACK JOINING ACCESSORIES ORDERING CODE

SERIES	MEVO	stucchi multisystem track, 1 circuit + databus
TYPE	LJOINT-RT	L - joint, recessed trim
FINISH	BK WH	black white

ORDERING CODE

Follow the steps to specify your fixture, example:
MEVO - LJOINT-RT - WH

- Track Joining Accessories - joins MEVO track runs. Offered in white and black.

NOTES

1. Finishes not available.

MEVO MOUNTING - TRACK-RT ORDERING CODE

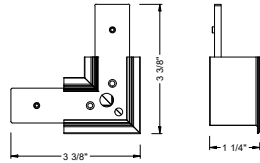
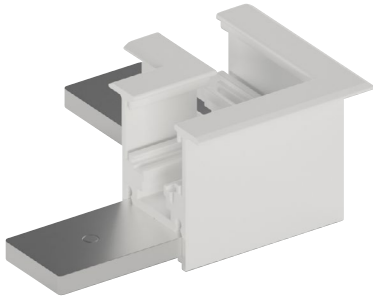
SERIES	MEVO	stucchi multisystem track, 1 circuit + databus
MOUNTING OPTIONS	AC-S2-5 AC-S2-10 AC-S2-15 RP-S1 ¹ RC-T LPB-M6	aircraft cable, suspension kit-2, 5FT aircraft cable, suspension kit-2, 10FT aircraft cable, suspension kit-2, 16.5FT rigid pendant, suspension kit-1 recessed clamp, recessed trim track long pendant bracket for suspension, M6
FINISH	BK ² WH ²	black white

ORDERING CODE

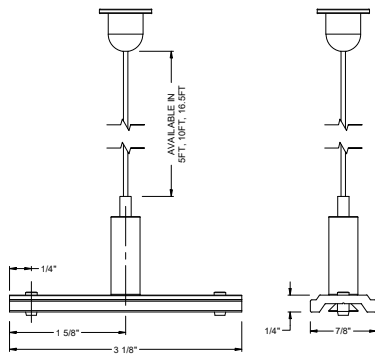
Follow the steps to specify your fixture, example:
MEVO - RP-S1 - WH

NOTES

1. Stem by others.
2. Finishes available only with RP-S1 type mounting options.



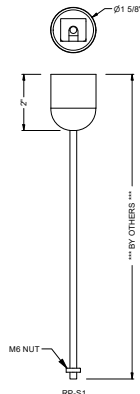
LJOINT-RT



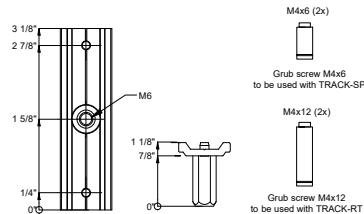
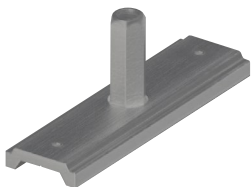
AC-S2



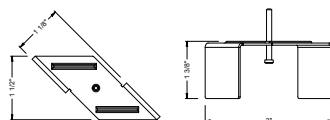
STEM BY OTHERS



RP-S1



LPB-M6



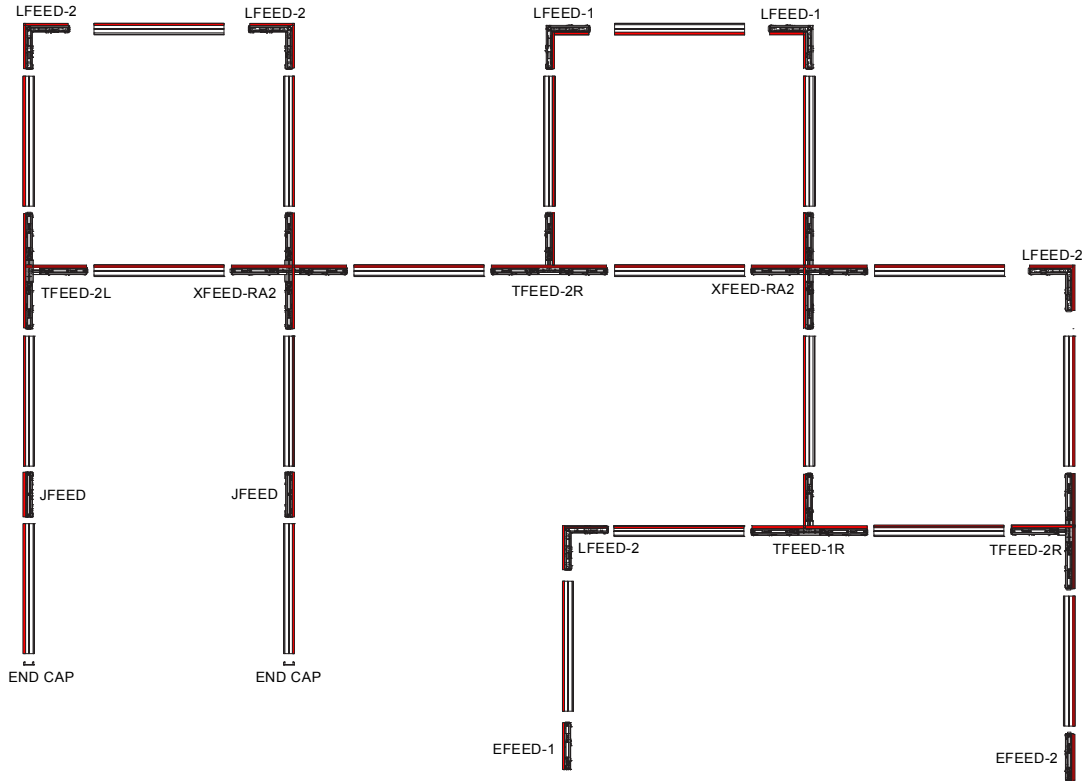
RC-T

PROJECT INFORMATION

JOB NAME		TYPE	
ORDERING CODE			

DESIGN GUIDE

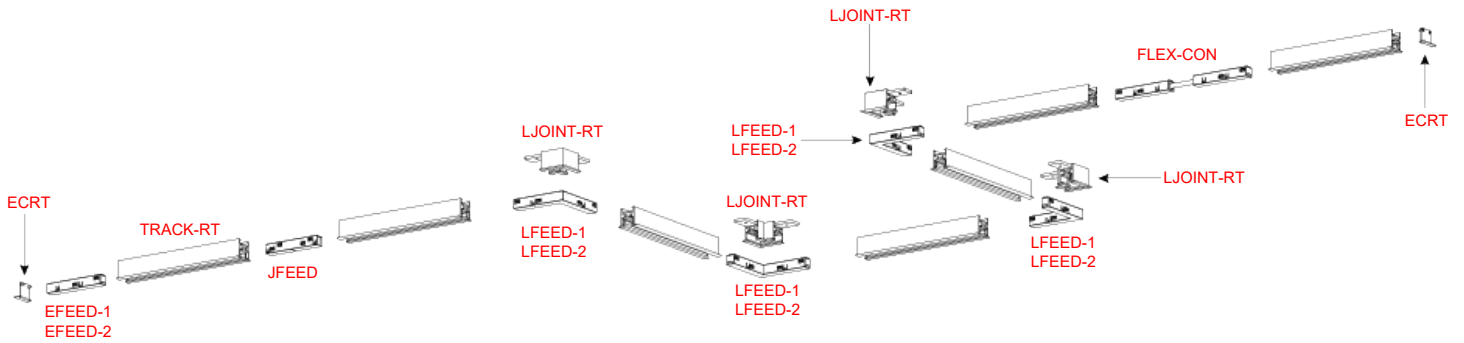
REFLECTED CEILING PLAN



Note:
Design guide for reference only.
End feed to be chosen based on polarity layout design. Do not use two different end feeds for single circuit.

MOUNTING SCHEME

TRACK-RT



PROJECT INFORMATION			
JOB NAME		TYPE	
ORDERING CODE			

POWER SUPPLY

MEVO 60W 96W Power Supply

Description

- Compact, high power density, efficient constant-voltage power supply with metal enclosure
- Universal 120-277 Vac input, 48 Vdc output
- IP20-rated case with silicone-based potting
- Lifetime: 50,000 hours min at 70°C case temperature
- Thermal protection
- Under-voltage, short circuit and over-current protection
- No minimum load requirement

Product Compatibility

- 48V fixtures

Technical Specs

- 120/277 Vac, 60 Hz input*
- 50°C maximum ambient temperature
- Class 2 rated
- 48 Vdc output
- Isolated input and output with Class II reinforced/double insulation
- Power factor > 0.9

Additional Technical Specs

- | | |
|---|--|
| 60W: | - 96W: |
| - 1.25A max. output current
up to 90% efficiency | - 2A max. output current
up to 92% efficiency |
| - Remote distance with 12AWG: 180 ft (55 m) | - Remote distance with 12AWG: 115 ft (35 m) |

Listings

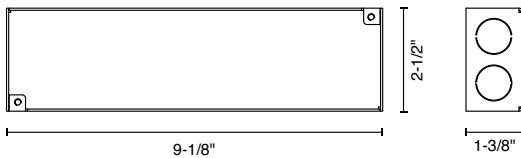
- UL 8750 Listed, Class 2
- CAN/CSA C22.2 No. 250.13-14 LED equipment for lighting applications



ORDERING CODES

Follow the steps to specify your fixture, example: P70514 - 48 - 60

Part Number	Voltage	Wattage
P70514	48 48V	60 60W 96 96W



Standard Enclosure

VOLTAGE DROP TABLE

POWER SUPPLY	A -Distance Power Supply/Feed Unit (2 x 1.5mm ² - 2 x AWG16)			
	5m [16.4']	10m [32.8']	20m [65.6']	30m [98.4']
B -Track Length with Δ v ≤ 5.5%				
60 w	50m [164']	50m [164']	50m [164']	50m [164']
96 w	50m [164']	50m [164']	40m [131']	25m [82']

Information refers to a load equivalent to the power supplied and equally distributed on the relevant length in the table.

JOB NAME		TYPE	
ORDERING CODE			

POWER SUPPLY

MEVO 260W Power Supply

Description

- Compact, high power density, efficient constant-voltage power supply with metal enclosure
- Universal 120-277Vac input, 48Vdc output
- Complies with ENERGY STAR®, DLC (DesignLight Consortium®) and CA Title 24 technical requirements
- IP66-rated case with silicone-based potting
- Lifetime: 50,000 hours min at 70°C case temperature
- Thermal protection
- Under-voltage, short circuit and over-current protection
- No minimum load requirement

Product Compatibility

- 48V fixtures

Technical Specs

- 120/277Vac, 60Hz input
- 50°C maximum ambient temperature
- 48Vdc output
- Class I (with earth ground) input to output isolation
- Power factor > 0.9
- THD < 20% (from 60% to 100% of rated power)
- 5.4A max. output current
- Up to 93% efficiency
- Remote distance with 12AWG: 42 ft (12.8 m)

Listings

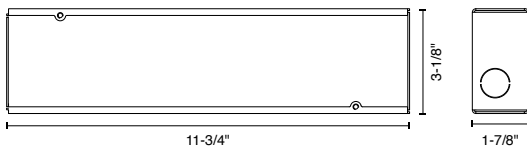
- UL 8750 Listed, Class 2
- CAN/CSA C22.2 No. 250.13-14 LED equipment for lighting applications



ORDERING CODES

Follow the steps to specify your fixture, example: P70514 - 48 - 260

Part Number	Voltage	Wattage
P70514	48 48V	260 260W



Standard Enclosure

VOLTAGE DROP TABLE

POWER SUPPLY	A -Distance Power Supply/Feed Unit (2 x 1.5mm ² - 2 x AWG16)			
	5m [16.4']	10m [32.8']	20m [65.6']	30m [98.4']
B -Track Length with Δ v ≤ 5.5%				
260 w	35m [115']	20m [66']	not admitted	not admitted

Information refers to a load equivalent to the power supplied and equally distributed on the relevant length in the table.