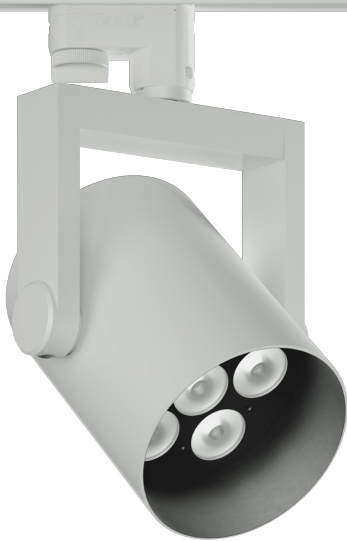


MOTO-PRO 130

5" Motorized Track Spot RGBW

formalighting
COLLECTION

CASAMBI



FEATURES

- Two Step Motor Drive – 90° Tilt (both directions) and 350° Rotation.
- 12° - 36° optical beam control.
- Motion, CCT control, and dimming controlled by Casambi®.

HOUSING

- Casted aluminum housing and driver enclosure with black or white finish.

MOUNTING

- Global Trac Systems, GEO (TEK) 2-circuit/2-neutral.

ELECTRICAL/CONTROLS

- 120V input, full Casambi® control: dimming, motion and beam shaping.

LISTING

- cCSA Listed to UL1574 (track suitable for dry locations only)

LED INFO

- TX-3535 RGBW:
90 CRI, R9 > 70: SDCM = 3-step MacAdam Ellipse; Lumen Maintenance: L₇₀ > 56,000 hrs

- *Fixture is not intended for theatrical use.

PROJECT INFORMATION

JOB NAME		TYPE	
ORDERING CODE			

ORDERING CODE

SERIES	MOTO-PRO	AC motorized
TYPE	MS3	5" track spot
LED	RGBW	red, green, blue, white
DELIVERED LUMENS	20LM	1310 lm Standard Configuration: 4000K
CCT	RGBW	RGBW
CRI	90	90 CRI
VOLTAGE	120	120V
LENS OPTION	10D 25D 35D	10 degrees 12° 25 degrees 24° 35 degrees 36°
DIMMING	CAS	Casambi Bluetooth control with flicker free 1% dimming
FINISH	BK WH	black white
MOUNTING OPTIONS	GEO	GEO spot - two circuit, two neutral
ACCESSORIES	See the last page for details.	

ORDERING CODE

Follow the steps to specify your fixture, example:

MOTO-PRO - MS3 - RGBW - 20LM - RGBW - 90 - 120 - 25D - CAS - WH - GEO

SW (LED)	POWER
DELIVERED LM	W (90 CRI)
1310	40