

MOTO-ZERO 66

2.5" Motorized Track Spot Standard White



FEATURES*

- Two Motor Drive – 90° Tilt (both directions) and 350° Rotation.
- Full range of LED options – standard white, tunable white and color tuning.
- Super Narrow 5°, 10° - 55°, and beam shaping 10° - 30° optical beam control.
- Motion, CCT control, beam and dimming controlled by Casambi®.
- Multiple mounting, glare control options and finishes available.

HOUSING

- Casted aluminum housing and driver enclosure with black or white finish.

MOUNTING

- ECO track / HALO® Power Trac track and Juno® track.
- Global Trac Systems, GEO (TEK) 2-circuit/2-neutral and GEOX (XTSC) 3-circuit/1-neutral/1-databus. (Ceiling Mount Only)

ELECTRICAL/CONTROLS

- 0-10V dimming through GEOX track databus, Motion and beam control by Casambi.
- Full Casambi control: dimming and motion.

LISTING

- cCSAus Listed to UL1574 (track suitable for dry locations only)

LED INFO

- 90 CRI: SDCM = 3-step MacAdam Ellipse, Lumen Maintenance: L₇₀ > 60,000 hrs

*Fixture is not designed or intended for scene setting. Refer Motolux Pro specification sheet for this type of application requirement.

PROJECT INFORMATION		
JOB NAME		TYPE
ORDERING CODE		

ORDERING CODE

SERIES	MOTO	AC motorized
TYPE	MS1	2.5" motorized track spot
LED	SW	standard white
DELIVERED LUMENS	25LM	2135 lm
CCT	27K 30K 35K 40K	2700K 3000K 3500K 4000K
CRI	90	90 CRI
VOLTAGE	120	120V
REFLECTOR	15D 25D 45D	15 degrees 15°, CBCP 14,540 25 degrees 25°, CBCP 7,303 45 degrees 45°, CBCP 3,038
DIMMING	CAS DIM10 ¹	Casambi control with flicker free 1% dimming 0-10V dimming to 1%
FINISH	BK WH	black white
MOUNTING OPTIONS	ECO JUNO GEO GEOX ¹	ECO/HALO - single circuit Juno - single circuit GEO spot - two circuit, two neutral GEOX spot - two circuit, two neutral with databus
ACCESSORIES	See the last page for details.	

ORDERING CODE

Follow the steps to specify your fixture, example:

MOTO - MS1 - SW - 25LM - 27K - 90 - 120 - 15D - CAS - WH - ECO

SW (LED)	POWER
DELIVERED LM	W (90 CRI)
2135	29

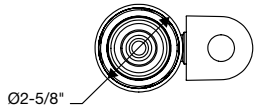
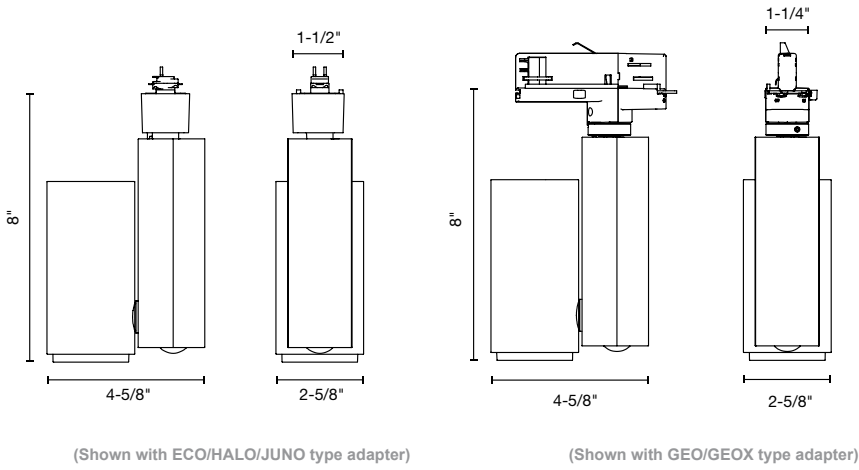
NOTES

1. 0-10V dimming available only with GEOX adapter. Motion by Casambi.

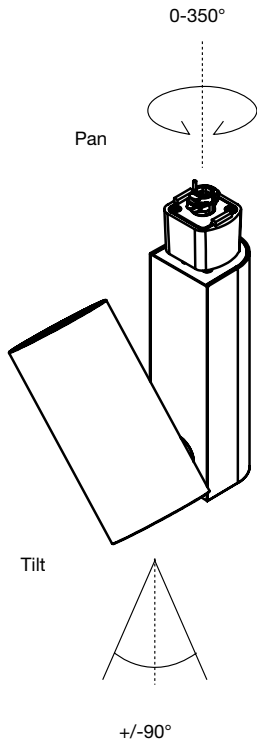
PROJECT INFORMATION

JOB NAME		TYPE	
ORDERING CODE			

PRODUCT DIMENSIONS



PRODUCT MOVEMENTS



PROJECT INFORMATION		
JOB NAME		TYPE
ORDERING CODE		

ACCESSORIES

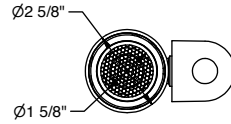
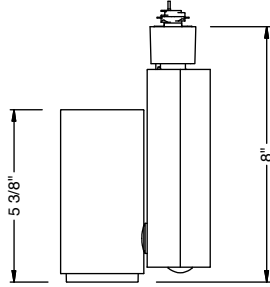
Accessories Ordering Codes¹

- HCL** honeycomb louver (Cat. No. MOTO-MS1-SW-HCL)
- LS** linear spread (Cat. No. MOTO-MS1-SW-LS)
- SNOOT** snoot (Cat. No. MOTO-MS1-SW-SNOOT)
- SHNT** shroud snoot (Cat. No. MOTO-MS1-SW-SHNT)

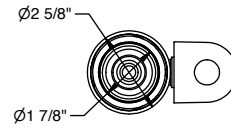
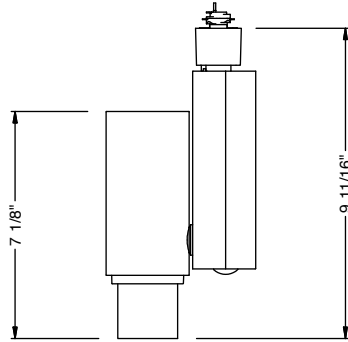
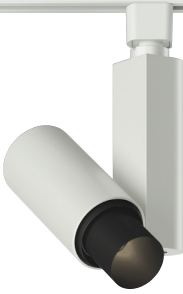
NOTES

1. Complete fixture ordering code by adding accessory ordering code. To order the accessory only use the catalog number.

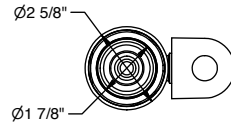
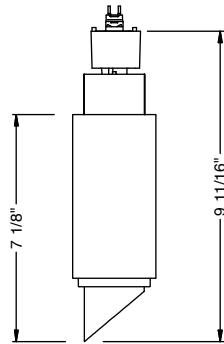
HONEYCOMB LOUVER



SNOOT



SHROUD SNOOT



LINEAR SPREAD

