

JOB NAME \_\_\_\_\_

CONTACT \_\_\_\_\_

ORDERING CODE \_\_\_\_\_

## ORDERING CODE

LM-79

**MOTO-ZERO 66** **2.5" Motorized Track Spot**  
**Standard White, Super Narrow**

formalighting  
COLLECTION

CASAMBI



<b>SERIES</b>	<b>MOTO</b>	motorized track spot
<b>TYPE</b>	<b>MS1</b>	2.5" motorized track spot
<b>LED</b>	<b>SW</b>	standard white, single high power LED
<b>DELIVERED LUMENS</b>	<b>07LM</b>	440 lm
<b>CCT</b>	<b>27K 30K 35K 40K</b>	2700K 3000K 3500K 4000K
<b>CRI</b>	<b>90</b>	90 CRI
<b>VOLTAGE</b>	<b>120</b>	120V
<b>LENS OPTION</b>	<b>N</b>	narrow, TIR optic 5°, CBCP 19,345
<b>DIMMING</b>	<b>CAS DIM10<sup>1</sup></b>	Casambi Bluetooth control with flicker free 1% dimming 0-10V dimming to 1%
<b>FINISH</b>	<b>WH BK</b>	white black
<b>MOUNTING OPTIONS</b>	<b>ECO JUNO GEO GEOX<sup>1</sup></b>	ECO/HALO - single circuit Juno - single circuit GEO - two circuit GEO with databus - three circuit

### ORDERING CODE

Follow the steps to specify your fixture, example:  
**MOTO - MS1 - SW - 07LM - 27K - 90 - 120 - N - CAS - WH - ECO**

SW (LED)	POWER
DELIVERED LM	W (90 CRI)
440	29

### NOTES

1. 0-10V dimming available only with GEOX adapter. Motion by Casambi.

## DESCRIPTION

MOTO 66 motorized spots are idea for visual merchandising of retail product, museum, and gallery installations. These markets require easy of adjustment for proper illumination of continuously changing displays.

## FEATURES\*

- Two Motor Drive – 90° Tilt (both directions) and 350° Rotation.
- Full range of LED options – standard white, tunable white and color tuning.
- Super Narrow 5°, 10° - 55°, and beam shaping 10° - 30° optical beam control.
- Motion, CCT control, beam and dimming controlled by Casambi®.
- Multiple mounting, glare control options and finishes available.

## HOUSING

- Casted aluminum housing and driver enclosure with black or white finish.

## MOUNTING

- ECO track / HALO® Power Trac track and Juno® track.
- Global Trac Systems, GEO (TEK) 2-circuit/2-neutral and GEOX (XTSC) 3-circuit/1-neutral/1-databus.

## ELECTRICAL/CONTROLS

- 0-10V dimming through GEOX track databus, Motion and beam control by Casambi.
- Full Casambi control: dimming, motion and beam shaping.

## LISTING

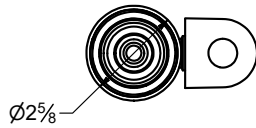
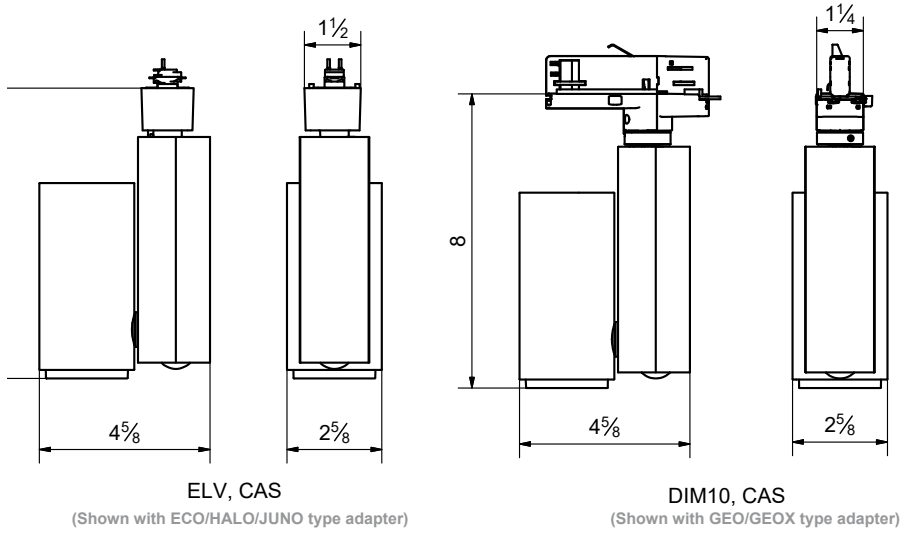
- cCSAus Listed to UL1574 (track suitable for dry locations only)

## LED INFO

- 90 CRI: SDCM = 3-step MacAdam Ellipse, Lumen Maintenance: L<sub>70</sub> > 60,500 hrs

\*Fixture is not designed or intended for scene setting. Refer Motolux Pro specification sheet for this type of application requirement.

## PRODUCT DIMENSIONS



## PRODUCT MOVEMENTS

