

MICROLINE Ø14

Flexible Cove Standard White - 108LM per link



FEATURES

- Discreet 9/16" diameter form factor.
- Max 460 lumens per foot delivered.
- 120° light distribution

HOUSING

- Available in black and white.

MOUNTING

- Surface mount with U-clips or L mounting brackets.
- Capable of being mounted directly to magnetic surfaces.

ELECTRICAL/CONTROLS

- 6W per foot.
- 24V constant voltage remote driver required.
- Maximum 16' run per 96W driver. See wiring guide.

LISTING

- cULus Listed to UL2108

LED INFO

- SMD LED: 90, 95 CRI: SDCM = 3-step MacAdam
Ellipse, Lumen Maintenance: L₇₀ > 50,000 hrs

PROJECT INFORMATION			
JOB NAME		TYPE	
ORDERING CODE			

ORDERING CODE

SERIES	MICRO	microline	
TYPE	MFO3	microline flex Ø14 standard	
LED	SW	standard white	
SIZE	1	1 link, 2-1/2", 108lm delivered	
	2	2 link, 5-1/2", 210lm delivered	
	3	3 link, 8-1/2", 324lm delivered	
	4	4 link, 11-7/16", 432lm delivered	
	5	5 link, 14-3/8", 540lm delivered	
	6	6 link, 17-5/16", 648lm delivered	
	7	7 link, 20-1/4", 756lm delivered	
	8	8 link, 23-1/4", 864lm delivered	
	9	9 link, 26-3/16", 972lm delivered	
	10	10 link, 29-1/8", 1080lm delivered	
	11	11 link, 32", 1188lm delivered	
	12	12 link, 35", 1296lm delivered	
	13	13 link, 38", 1404lm delivered	
	14	14 link, 41", 1512lm delivered	
	15	15 link, 44", 1620lm delivered	
	16	16 link, 46-7/8", 1728lm delivered	
CCT	27K	2700K	(0.95)
	30K	3000K	(1.00)
	35K	3500K	(1.03)
	40K	4000K	(1.06)
CRI	97	97 CRI	
LENS OPTION	C	clear lens	(1.00)
	D	diffused	(0.95)
FINISH	BK WH	black white	
VOLTAGE	24	24V	
ACCESSORIES	See page 2 for details.		

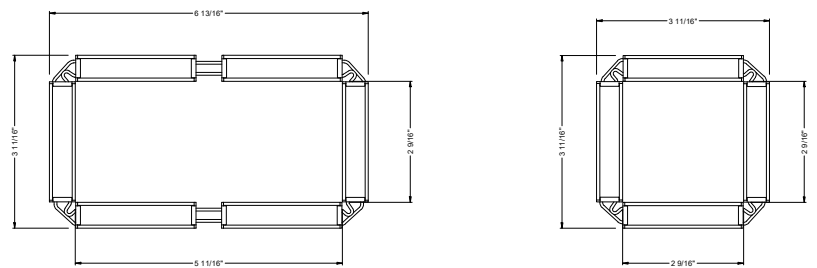
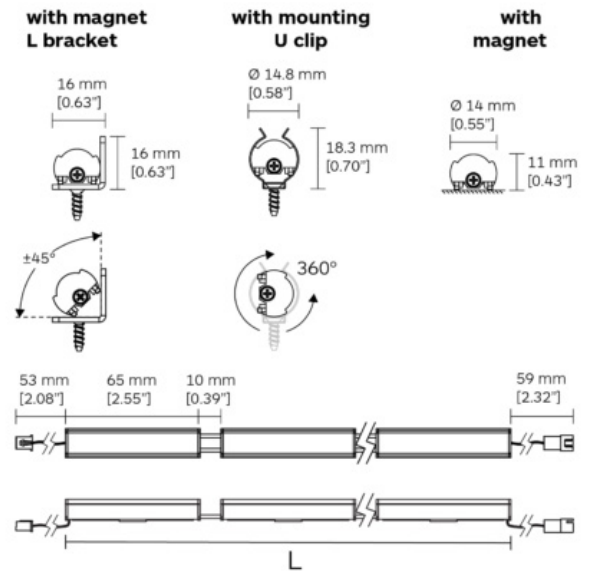
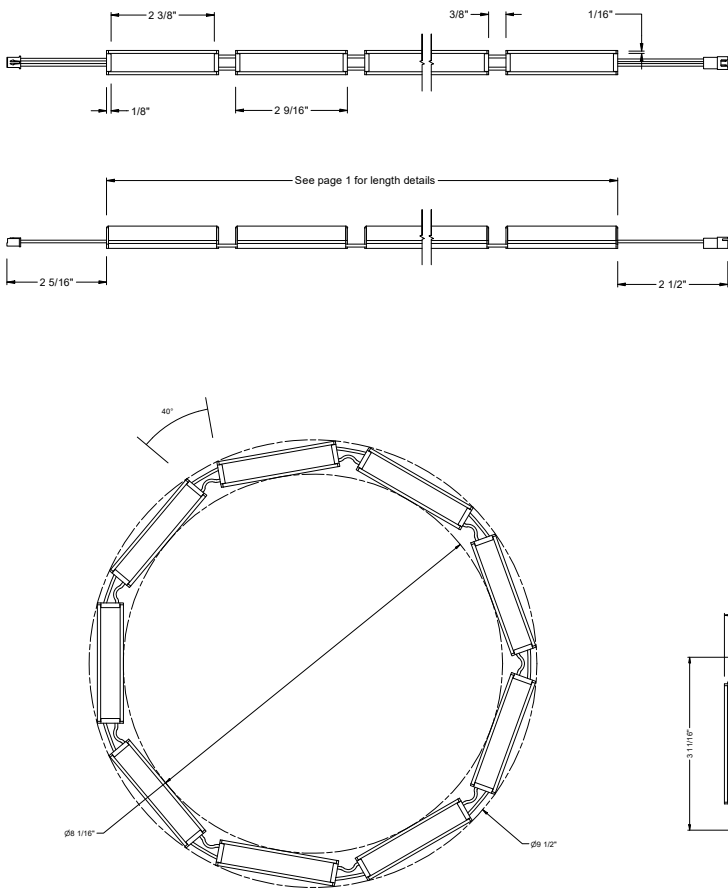
Follow the steps to specify your fixture, example:
MICRO - MFO3 - SW - 6 - 30K - 97 - C - BK - 24

PROJECT INFORMATION			
JOB NAME		TYPE	
ORDERING CODE			

POWER TABLE

MICRO	DELIVERED LUMENS	LED POWER
NO. LINKS	LUMENS (3000K)	W (95CRI+)
1 LINK	108	2
2 LINK	216	3
3 LINK	324	3.6
4 LINK	432	5
5 LINK	540	6
6 LINK	648	8
7 LINK	756	9
8 LINK	864	10
9 LINK	972	11
10 LINK	1080	12
11 LINK	1188	14
12 LINK	1256	15
13 LINK	1404	16
14 LINK	1512	17
15 LINK	1620	18
16 LINK	1728	20

PRODUCT DIMENSIONS



ACCESSORIES

MICRO-EXT-HARNESS¹	40" extension harness, microline to driver
MICRO-DRIVER-HARNESS	12" wire leads with female plug, included with driver
MICRO-LBRKT^{2,3}	mounting L-bracket
MICRO-UCLIP^{2,3}	mounting U-clip
MICRO-SCREW^{2,3}	screw for U-clip and brackets

NOTES

- Do not use more than five (5) harness extensions on a single run.
- Mounting accessories are only for additional or spare circumstances.
- All Microline include adequate quantity of mounting components.

- Must order one per link.

PROJECT INFORMATION			
JOB NAME		TYPE	
ORDERING CODE			

REMOTE DRIVER - 24VDC DRIVER

SERIES	P70501-MICRO	LED driver with box and harness
VOLTAGE	24	24V
DIMMING	DIM10	0-10V dimming to 1%
ELECTRICAL OPTIONS	96	96W

ORDERING CODE

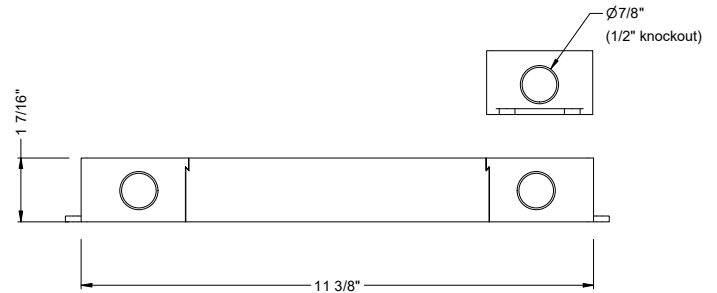
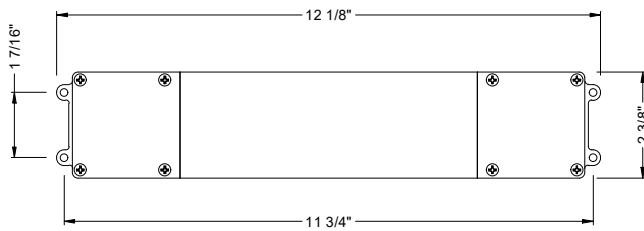
Follow the steps to specify your fixture, example:
P70501 - MICRO - 24 - DIM10 - 96

DESCRIPTION

- 0-10V dimmable smooth flicker free dimming down to 1%
- Integrated junction box with multiple 7/8" knockouts
- UL2043 plenum rated

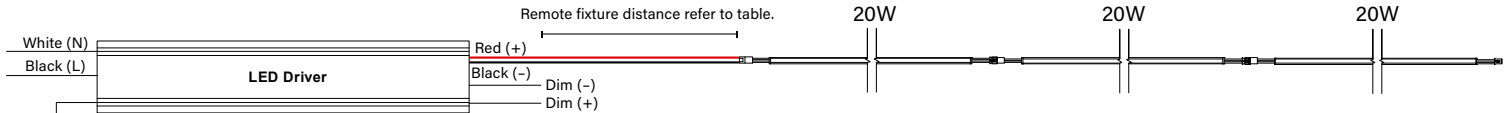
ELECTRICAL/CONTROLS

- 120-277Vac, 50/60Hz input
- 24Vdc, 96W output
- 0-10V compatible
- Operating temperature: -13°F to 104°F
- Class II rated
- Short circuit protection
- Overload protection
- Over-voltage protection
- Thermal protection
- IP 66 rated



WIRING GUIDES

SERIES

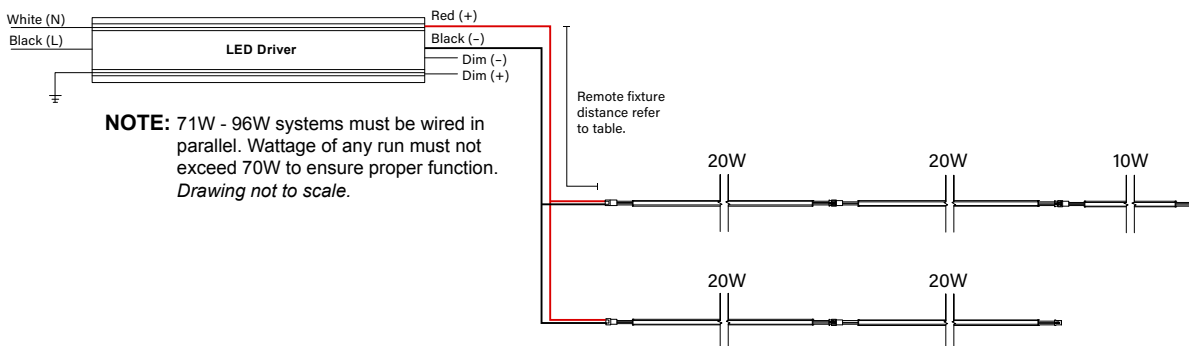


NOTE: 0W - 70W systems wired in series OK.
Drawing not to scale.

REMOTE FIXTURE DISTANCE	
AWG VALUE	DISTANCE (FT)
20 AWG (USING MICRO-EXT-HARNESS)1	16.4
16 AWG (BY OTHERS)	30
14 AWG (BY OTHERS)	50
12 AWG (BY OTHERS)	70

1. Five (5) harness extension maximum used to achieve distance.

PARALLEL



NOTE: 71W - 96W systems must be wired in parallel. Wattage of any run must not exceed 70W to ensure proper function.
Drawing not to scale.