

# NEW PRODUCTS

2025-2026



# SUSTAINABILITY



## SUSTAINABILITY CERTIFICATIONS *BUILT FOR THE FUTURE*

Many Ledra Brands fixtures have sustainability-related listings, such as Declare, DLC, Well, Leed, and FSC Certified. Our focus has been getting our products Red List Approved, ensuring only the highest product quality and longevity.



## ECO-DESIGNED PRODUCTS *MADE TO BE RECYCLED*

Our products are designed with sustainability in mind, with quality control at every level of the manufacturing process. Each fixture is designed to make recycling easy, with most of our fixtures 95% recyclable or more.



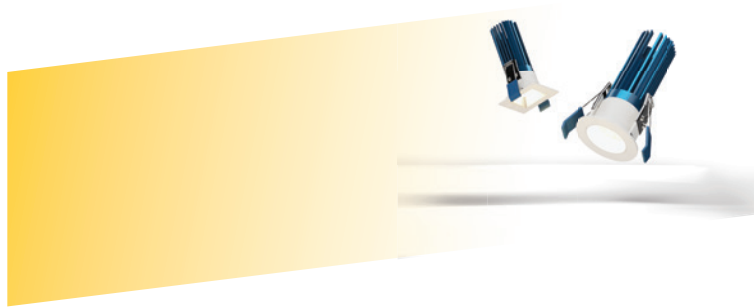
## END-OF-LIFE RECYCLING *A CIRCULAR APPROACH*

For our recycling/end-of-life program, fixtures can be sent back to our factory for us to recycle, or the end user can recycle the fixture themselves. Damaged or non-reusable parts, including electronic components, are sorted into recycling bins for commercial processing.



## SUSTAINABLE SHIPPING PRACTICES *REDUCING CO2 AT EVERY STEP*

For our shipping process, we fill our boxes as much as possible and use recyclable packing materials. We also design our products using lighter materials, creating less CO2 emissions during shipping.



**EFFICIENT LIGHTING TECHNOLOGY**  
*MAXIMUM LUMENS, MINIMUM WASTE*

Alphabet and Bruck Lighting's energy-efficient LEDs and Drivers produce fixtures with up to 130 lumens per watt. We underdrive our power supplies and LEDs to ensure longevity and efficiency. Superior components like our graphite thermal transfer pad are used to help further dissipate heat.



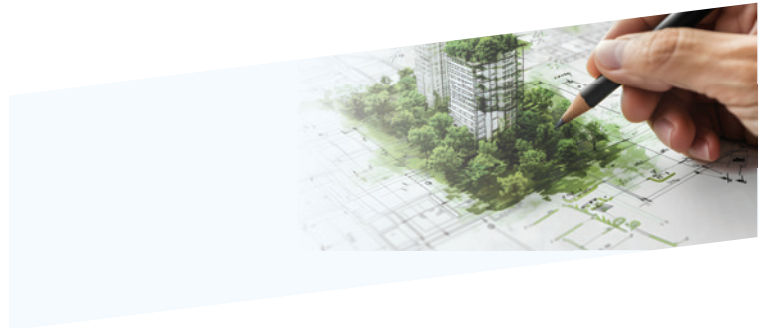
**SUSTAINABLE SHIPPING PRACTICES**  
*REDUCING CO2 AT EVERY STEP*

For our shipping process, we fill our boxes as much as possible and use recyclable packing materials. We also design our products using lighter materials, creating less CO2 emissions during shipping.



**EMPLOYEE WELLNESS**  
*SUSTAINABILITY BEYOND PRODUCTS*

Employee wellness is paramount to Ledra Brands. HEPA Filters are used in all air systems. Monthly lunches are provided for the entire company, and several types of fruit and various beverages are provided daily to all employees, including quadruple-filtered water. We pride ourselves on our beautiful, comfortable headquarters, prioritizing employee safety and satisfaction.



**A BRIGHTER,  
CLEANER FUTURE**

Ledra Brands is invested in the future. The only impact we want to leave is our passion and dedication to the lighting industry. Let's work together for a brighter, cleaner future.

# NU8PRO

scan for  
NU8PRO



NU8R WHITE



NU8R BLACK



NU8R MATTE CHROME



CUSTOM  
RAL

## NU8PRO

- Apart of the award winning NU Pro downlight family
- Up to 9,000 lm delivered
- 12° to 75° beam angle options

### TECHNOLOGIES & SOLUTIONS



SW



XTM



WD



TW



RGBW



AIRTIGHT



WET  
RATED



NSF



DEAD-  
FRONT



GAMMA



GM-3

GM-2

GM-1

# GAMMA MULTIPLES

- Budget friendly
- 1, 2 or 3 cell configuration
- Up to 2,000 lm delivered per unit
- 15° - 55° beam angle options

scan for  
GAMMA MULTIPLES

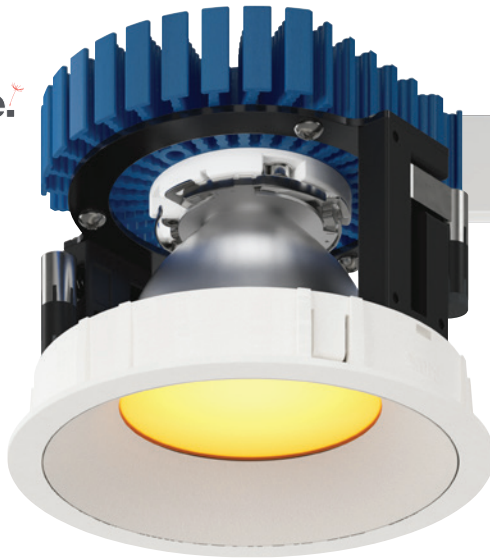


TECHNOLOGIES



SW

Declare.



NU4PRO



LX PRO



NU3PRO



NU1PRO



## HOSPITALITY COLLECTION 2200K & 2400K

- Available in NU1, NU3, NU4 and LX Pro
- Warm illumination with 2200K or 2400K CCT
- Superior Color Consistency with 2-step MacAdam Ellipse binning

scan for  
HOSPITALITY





# MEGAPUCK

1 1/4" H



1 1/4" W



## THETA MEGA PUCK

- Up to 800 lm per puck
- Polycarbonate / PMMA optics with superior beam control
- Anodized aluminum housing
- Fast & easy installation
- Great for: pathways, trails, patios retaining wall, bench, planters, steps, sculptures, covered parking lots, charging stations

scan for  
THETA MEGA PUCK



### TECHNOLOGIES & SOLUTIONS



SW



TW



RGBW



IK10



IP67



AMBER



IDA

# BETAPRO



4" UP/DOWN



6" UP/DOWN

NEW  
SIZES



TALL

## BETA UP/DOWN

- 4" & 6" round cylinders utilizing NU Pro engines
- Up to 9500 lm delivered (30% up & 70% down)
- Independent Uplight / Downlight Control
- 8° - 80° beam angle options



SW



WD



TW

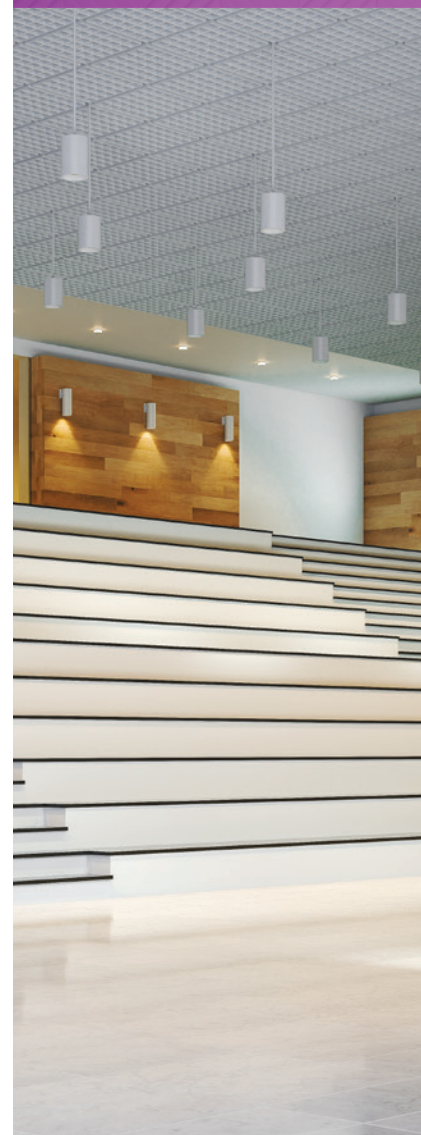


RGBW



CUSTOM  
RAL

scan for  
BETA UP DOWN





scan for  
NEW SIZES



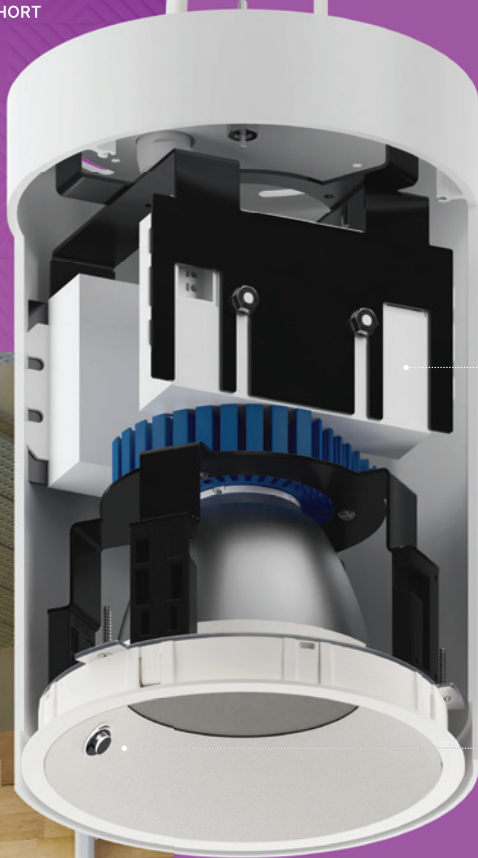
# BETA 4 & 6 NOW WITH INTEGRAL EMERGENCY BATTERY & SWITCH



MEDIUM



SHORT



INTEGRAL  
EMERGENCY BATTERY



INTEGRAL  
EMERGENCY SWITCH

## BETA<sub>EM</sub>

- 4" & 6" cylinders utilizing NU Pro engines
- Up to 4,100 lm delivered
- 7w integrated test switch + integral battery



SW

WD

scan for  
BETA EM





bruck

# 48V MEVO STUCCHI

## deep regress track



scan for  
MEVO STUCCHI DEEP REGRESS

**6** MSWW  
WITH DEEP REGRESS MEVO

**6** MSGL  
WITH DEEP REGRESS MEVO

**6** MSWW  
WITH STANDARD MEVO

**6** MSGL  
WITH STANDARD MEVO

### MS wall wash

- Up to 1,600 lm delivered
- 90 CRI
- 3000K or 4000K
- Black or white finish



scan for  
MSWW

### MS general light

- Up to 1,700 lm delivered
- 90 CRI
- 3000K or 4000K
- Black or white finish



scan for  
MSGL



# px projector

- Museum-grade framing Projector
- 1,550 lm delivered, CBCP 15,000+
- Zoom optic 15° to 36° or fixed 55°
- Gobo capability



 PX PROJECTOR



scan for  
PROJECTOR

# microline spots

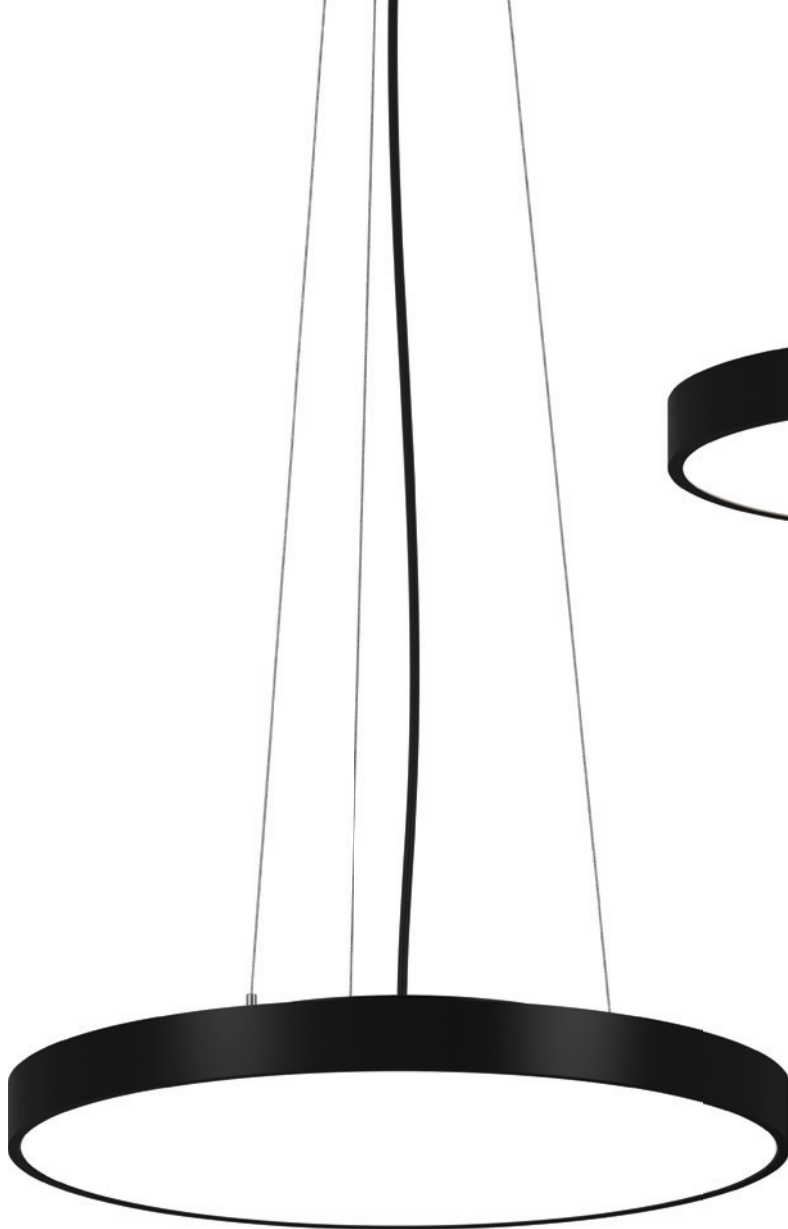
scan for  
MICROLINE SPOTS



 RIGID

- Rigid & flexible performance cove
- Precision spot optics
- Elliptical spread, 21° or 29° beam angle options
- Up to 240 lm delivered per foot

 FLEXIBLE



6 PENDANT 24"



6 SURFACE 18"

# rhythm essentials

- Up to 6500 lm delivered
- 18" or 24" Diameter
- Direct or direct/indirect light
- 3000k, 3500k or 4000k
- Budget friendly
- Round, Pendant or Surface
- Black or White finishes

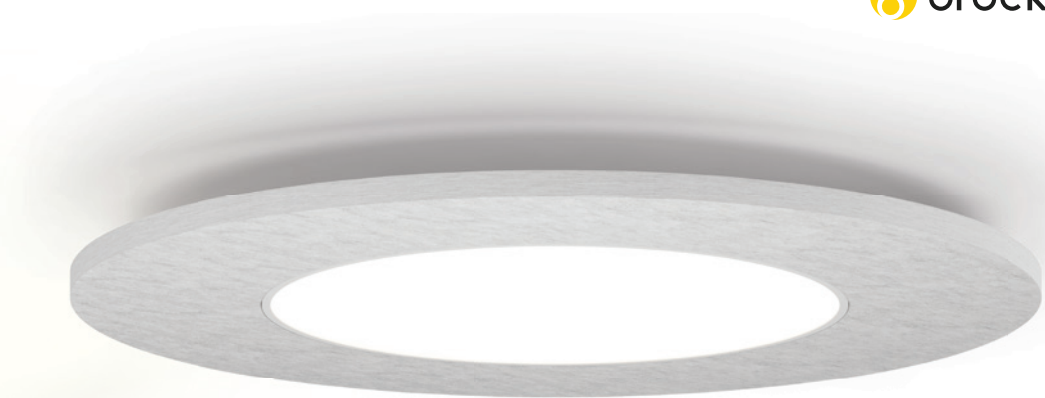
scan for  
RHYTHM







6 16" ACOUSTIC ANTHRACITE



6 24" ACOUSTIC WHITE



6 ACOUSTIC GREY BLANK

# jazz acoustic

- Up to 6000 lm delivered
- 16", 24" or 40" diameter
- Direct or Direct/Indirect
- 2700K, 3000K, 3500K or 4000K
- Decorative, recycled, PET fiber acoustic panel
- UV stable, low VOC, high sound absorption acoustic material
- Anthracite, white, & grey finish options





# harmony

- Round or hexagon shape
- Direct/indirect pendant with acoustic panel option
- 40" or 60" diameter
- Black, white, or custom RAL finish
- Up to 7,600 lumens





scan for  
HARMONY





***LEDRA*** BRANDS  
INNOVATION INTEGRATED

88 MAXWELL  
IRVINE, CA 92618  
714.259.9959