

JOB NAME _____

CONTACT _____

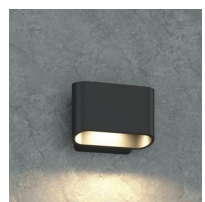
ORDERING CODE _____

ADA LM-79

OUTDOOR ECLIPSE

Down IP65 Wall

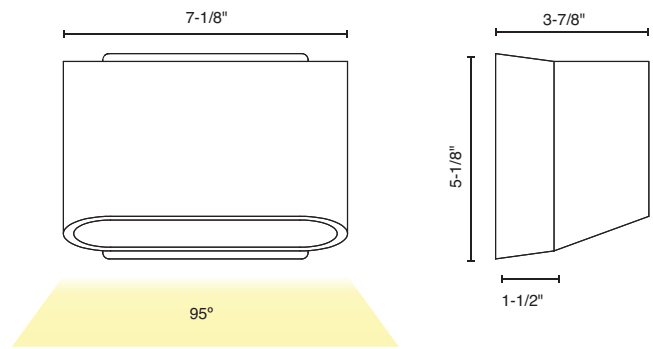
ORDERING CODE		
SERIES	EXT	exterior
TYPE	ED	eclipse down, 9.6W, 618lm
CCT	30K	3000K
CRI	90	90 CRI
VOLTAGE	UNV	120V-277V
FINISH	BK	anthracite



BK

ORDERING CODE _____

Follow the steps to specify your fixture, example:
EXT - ED - 30K - 90 - UNV - BK



DESCRIPTION

The Outdoor Eclipse is an exterior sconce made of extruded aluminum. Its contemporary organic design allows for a modern look with a warm glow illuminating the wall with either up (damp location only) or down installation. Outdoor Eclipse includes an onboard driver. 5" canopy is easily surface mounted to cover a standard junction box. It is offered in anthracite finish.

HOUSING

- Extruded aluminum housing in anthracite.

MOUNTING

- Mounts to 3-1/2" to 4" octagonal or 4" square recessed junction box.

ELECTRICAL/CONTROLS

- Integrated LED Module
- Non-dimmable

LISTING

- ETLus Listed to UL1598 (suitable for wet locations)
- cETL Listed to CSA C22.2 #250.0
- ADA compliant
- BUG Rating: B1 - U1 - G0
- 3000k or warmer must be selected for International Dark-Sky Association approval

LED INFO

- LED: Zigen ZGIBGX30KHO
- SDCM: 3-step MacAdam Ellipse
- Lumen Maintenance: $L_{70} > 50,000$ hrs
- Warranty: 5 year limited warranty