

PROJECT INFORMATION		
JOB NAME		TYPE
ORDERING CODE		

SERA 4

4" Square Down IP65 Wall

35° - 50° BEAM		
(Note: Specifications are subject to change without notice)		
14mm COB PERFORMANCE DATA		
LED LIGHT ENGINE	NOMINAL DELIVERED LUMENS	SYSTEM WATTAGE
10LM	780LM @30K/90CRI	10W
Notes	Delivered lumens based on 35D optic. (see page 2)	



FEATURES

- Pre finish anodizing process for corrosive-inhibiting protection
- 2 Finish options: Anthracite or Silver
- 3000K or 4000K CCT options
- 35° - 50° Optical beam control
- Louver (Slit) accessory
- IP65 Rated

DIMMING AND CONTROLS

- 0-10V dimming

CONSTRUCTION

- Extruded aluminum housing
- Anodized and powder coat finish
- Mount to 3-1/2" to 4" octagonal or 4" square recessed junction box

LED

- LED: Zigen ZG6BGE34W0S
- SDCM: 3-step MacAdam Ellipse
- Lumen Maintenance: $L_{70} > 50,000$ hrs

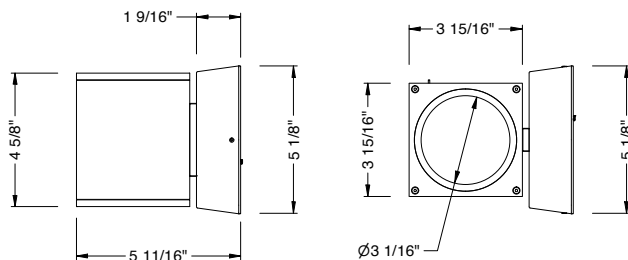
LISTING

- ETLus Listed to UL1598 (suitable for wet locations)
- cETL Listed to CSA C22.2 #250.0
- Warranty: 5 year limited warranty
- BUG Rating: B1 - U1 - G
- 3000k or warmer must be selected for International Dark-Sky Association approval

ELECTRICAL

- 120V-277V
- Ambient operating temperature -20°C/-4°F to +40°C/+104°F

WALL



PROJECT INFORMATION		
JOB NAME		TYPE
ORDERING CODE		

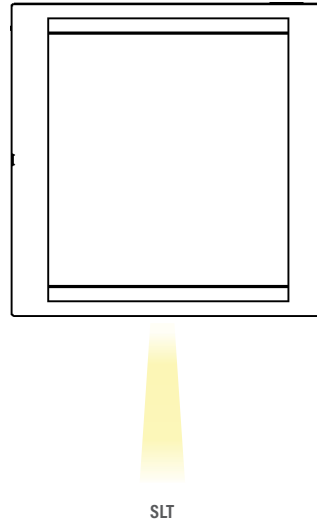
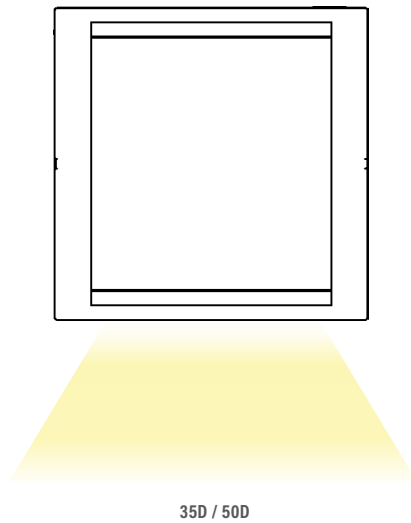
BEAM ORDERING CODE											
SERIES	EXT	exterior									
TYPE	4QD	4" square wall down, 10W									
LED	SW	standard white									
DELIVERED LUMENS	10LM	780 lm									
	Standard Configuration: 3000K Calculated Delivered Lumens = [Delivered Lumen Value] x [CCT Multiplier] x [Optic Multiplier]										
CCT	30K	3000K									
	40K	4000K									
		<table border="1"> <thead> <tr> <th>CCT</th> <th>3000K</th> <th>4000K</th> </tr> </thead> <tbody> <tr> <td>CRI</td> <td>90</td> <td>90</td> </tr> <tr> <td>CCT MULTIPLIER FOR LUMEN OUTPUT</td> <td>1</td> <td>1.1</td> </tr> </tbody> </table>	CCT	3000K	4000K	CRI	90	90	CCT MULTIPLIER FOR LUMEN OUTPUT	1	1.1
CCT	3000K	4000K									
CRI	90	90									
CCT MULTIPLIER FOR LUMEN OUTPUT	1	1.1									
CRI	90	90 CRI									
OPTIC & LM MULTIPLIER SEE PAGE 3	35D	35° reflector (1.00)									
	50D	50° reflector (1.00)									
	SLT¹	84° x 14° louver (0.12)									
FINISH	BK	anthracite									
	SV	silver									

BEAM ORDERING CODE		
MOUNTING OPTIONS	W²	wall mount
VOLTAGE	UNV-10V	120V-277V integrated driver, flicker free 0-10V dimming to 10%

YOUR COMPLETED ORDERING CODE
Follow the steps to specify your fixture, example:
EXT - 4QD - SW - 10LM - 30K - 90 - 50D - BK - W - UNV - 10V

NOTES

1. Slit louver for light affect, not available with 35D/50D.
2. Up or down wall mounting. Not BUG or Dark Sky rated in up mount.

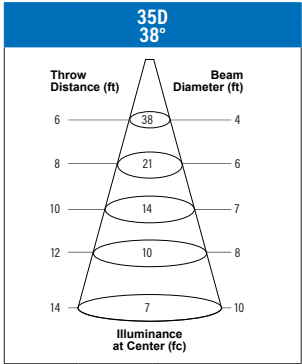


PROJECT INFORMATION

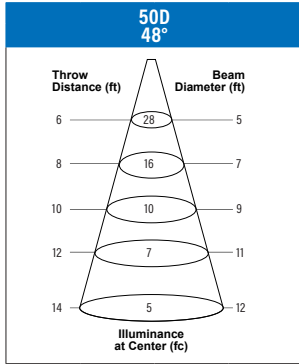
JOB NAME		TYPE	
ORDERING CODE			

PHOTOMETRIC DATA

10LM CCT MULTIPLIERS	
	90CRI
3000K	1
4000K	1.1
FC Formula = CBCP / Distance ²	



WATTS:: 9.5	LPW:: 81.6
LUMENS: 775	CCT:: 3000K
INTENSITY	
DEGREE	CANDELA
0	1369
5	1311
15	877
25	463
35	249
45	22



WATTS:: 9.5	LPW:: 81.9
LUMENS: 778	CCT:: 3000K
INTENSITY	
DEGREE	CANDELA
0	1007
5	985
15	731
25	472
35	333
45	38