

PROJECT INFORMATION		
JOB NAME		TYPE
ORDERING CODE		

## GX15

3" Spot SMARTrack

SMARTrack



### FEATURES

- The SMARTrack GX15 is a spot fixture with 1150 lm at 90+ CRI. It features optional lens and glare reduction accessories. It is offered in black or white matte finish.

### HOUSING

- Extruded aluminum housing with black or white finish.

### MOUNTING

- 48Vdc SMARTrack systems
- 350° rotation, 90° tilt

### ELECTRICAL/CONTROLS

- 48Vdc input (+/- 5%), 15W
- 0-10V hardwire control with dim to off using SMARTrack data bus

### LISTING

- ETLus Listed to UL1574 (track suitable for dry locations only)
- cETL Listed to CSA C22.2 #9.0

### LED INFO

- LED: Cree Xlamp® CXA1512
- SDCM: 3-step MacAdam Ellipse
- Lumen Maintenance: L<sub>70</sub> > 60,500 hrs

### ORDERING CODE

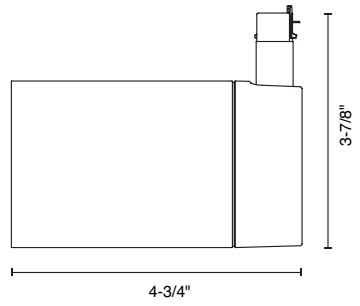
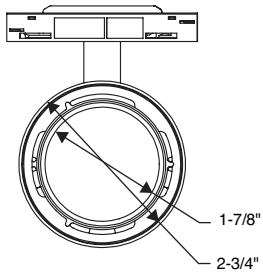
PART NUMBER	350440	
DELIVERED LUMENS	13LM	1150 lm <small>Calculated Delivered Lumens = [Delivered Lumen Value] x [CCT Multiplier]</small>
CCT & LM MULTIPLIER	30K 35K	3000K 3500K <span style="float: right;">(1.00) (1.02)</span>
CRI	90	90 CRI
OPTIC	20 38 50	20° 38° 50°
VOLTAGE	48	48V
DIMMING	10V	0-10V dimming to 5%
FINISH	WH BK	white black
MOUNTING OPTIONS	SMT SMTPX	SMARTrack monopoint SMARTrack pendant, X = desired cable length from 72" to 6"
ACCESSORIES	See page 3 for details.	

### ORDERING CODE

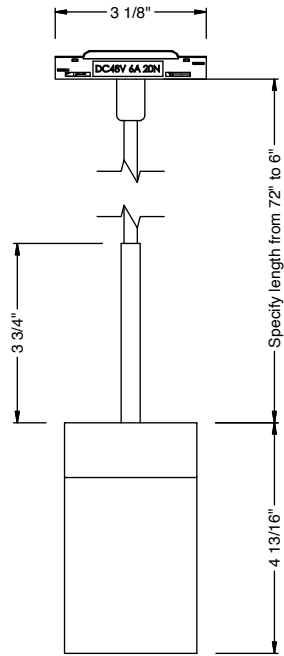
Follow the steps to specify your fixture, example:  
**350440 - 13LM - 30K - 90 - 38 - 48 - 10V - WH - SMT**

PROJECT INFORMATION		
JOB NAME		TYPE
ORDERING CODE		

## MOUNTING OPTIONS



**SMT MONOPOINT**



**SMT PENDANT**

PROJECT INFORMATION		
JOB NAME		TYPE
ORDERING CODE		

## ACCESSORIES

Follow the steps to specify your fixture, example:

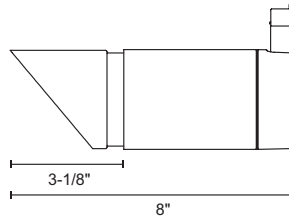
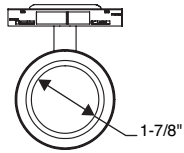
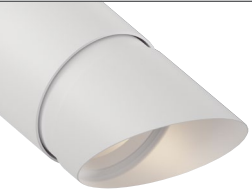
350440 - 13LM - 30K - 90 - 38 - 48 - 10V- WH - SMT - SNOOT - BK

### Accessories

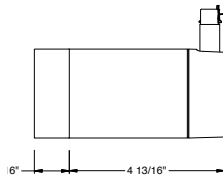
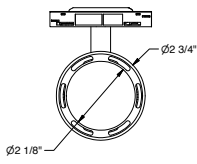
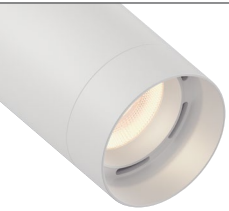
GX15-SNOOT-BK	snoot, black
GX15-SNOOT-WH	snoot, white
GX15-HCL-BK	honeycomb louver, black
GX15-HCL-WH	honeycomb louver, white
GX15-BD-BK	barn doors, black
GX15-BD-WH	barn doors, white
GX15-SHNT-BK	shroud snoot, black
GX15-SHNT-WH	shroud snoot, white

**NOTE:**Omit GX15 from code when requesting accessory with fixture.  
Fixture will only accept one accessory at a time.

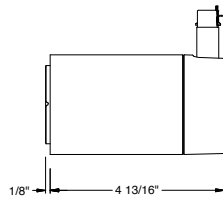
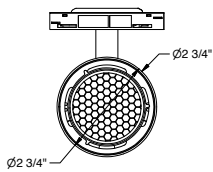
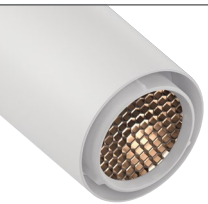
### SHROUD SNOOT



### SNOOT



### HONEYCOMB LOUVER



### BARN DOORS

