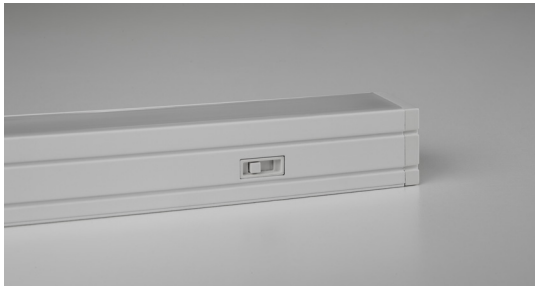


SABER

CCT Select, 120V



Direct Connect



Standard three selectable CCT 3000K, 3500K, 4000K



BZ



WH

DESCRIPTION

The Saber with CCT Select is a low profile, linear, line voltage, LED cove fixture with a white or bronze aluminum extrusion housing. It has highly efficient, color consistent LEDs with an SDCM of 3. A premium opal lens allows for smooth and even illumination eliminating pixilation and striations on the wall or surface below. The Saber is dimmable to 5% with integrated driver and is optimized for fast permanent installation. Plug-in or hardwire with flexible cable connectors offered. Switch boxes offered with Occupancy Sensor option. Selectable CCT options include 3000K, 3500K, 4000K. Saber carries the first 5 Year FIXTURE WARRANTY.

HOUSING

- Extruded aluminum housing with white or bronze finish.

MOUNTING

- 0-90° angle adjustable mounting brackets. Two mounting brackets included per fixture. One end to end connector included per fixture.

ELECTRICAL/CONTROLS

- 120Vac, 50-60Hz input
- Typical 750 lumen/foot or 75 lm/W
- Listing for hardwired and portable application
- Triac dimming (with standard dimmer)
- Linkable up to 300W
- Ambient operating temperature: -10°C to + 40°C

LISTINGS

- ETLus Listed to UL1598 and UL153 (suitable for dry locations only)
- cETL Listed to CSA C22.2 #250.0
- IP20 rated
- JA8, Title 24 certified (2019 standard)
- Energy Star certified

LED INFO

- Samsung 2835 LED:
- SDCM: 3-step MacAdam Ellipse, Duv +/- 0.001, Lumen Maintenance: L₇₀ > 50,000 hrs

PROJECT INFORMATION

JOB NAME		TYPE	
ORDERING CODE			



LM-79

ORDERING CODE

PART NUMBER	138513		
LENGTH	12	12-7/16"	
	16	16-7/16"	
	24	24-3/8"	
	32	32-3/8"	
CCT & LM MULTIPLIER	3CCT	3000K (1.00)	
		3500K (1.01)	
		4000K (1.03)	
CRI	90	90 CRI	
FINISH	WH	white	
	BZ	bronze	

ORDERING CODE

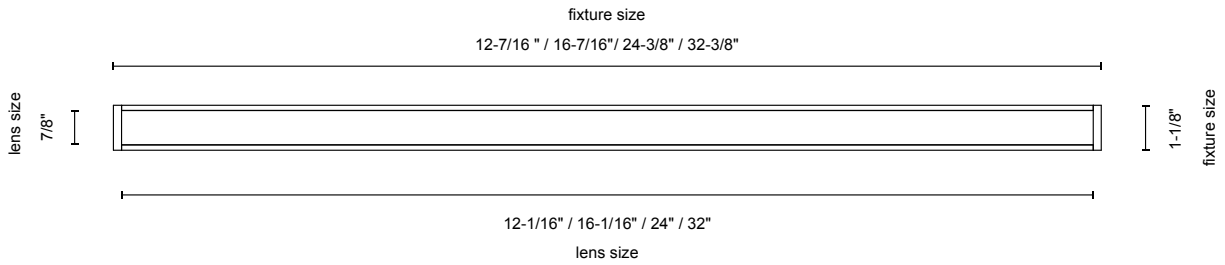
Follow the steps to specify your fixture, example:

138513 - 12 - 3CCT - 90 - WH

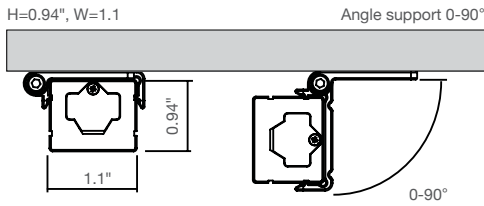
LENGTH (INCH)	LUMENS (LM)	POWER (W)
12-7/16"	750	10
16-7/16"	950	13
24-3/8"	1500	20
32-3/8"	2000	26

PROJECT INFORMATION			
JOB NAME		TYPE	
ORDERING CODE			

PRODUCT DIMENSIONS



Dimensions



ACCESSORIES

Accessories

- 138521BK 6" flexible connector, black
- 138522BK 12" flexible connector, black
- 138523BK 24" flexible connector, black
- 138524BK 72" flexible connector, black

- 138521WH 6" flexible connector, white
- 138522WH 12" flexible connector, white
- 138523WH 24" flexible connector, white
- 138524WH 72" flexible connector, white

- 138526BK 72" power feed, black
- 138526WH 72" power feed, white

- 138527BK 72" plug-in feed, black
- 138527WH 72" plug-in feed, white

- 138519WH/120 terminating junction box, non switchable, white



Flexible Connector

Technical Specs:
120Vac



Plug-In Power Feed

Technical Specs:
120Vac



Power Feed

Technical Specs:
120Vac

NOTES

- End-to-end connector included with each fixture.



Terminating Junction Box

Technical Specs:
120Vac
Multiple 1/2" knockouts
Captive mounting screws
Up to 300W on single box

Connectors¹



End-to-end