

Light efficiency:

60 Lumen/Watt

Light quality:

CRI: 81.5

Color temperature:

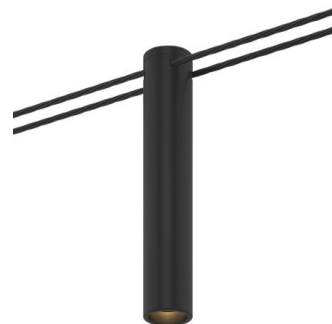
4085 K

Output: 746 lm

Peak: 2246 cd

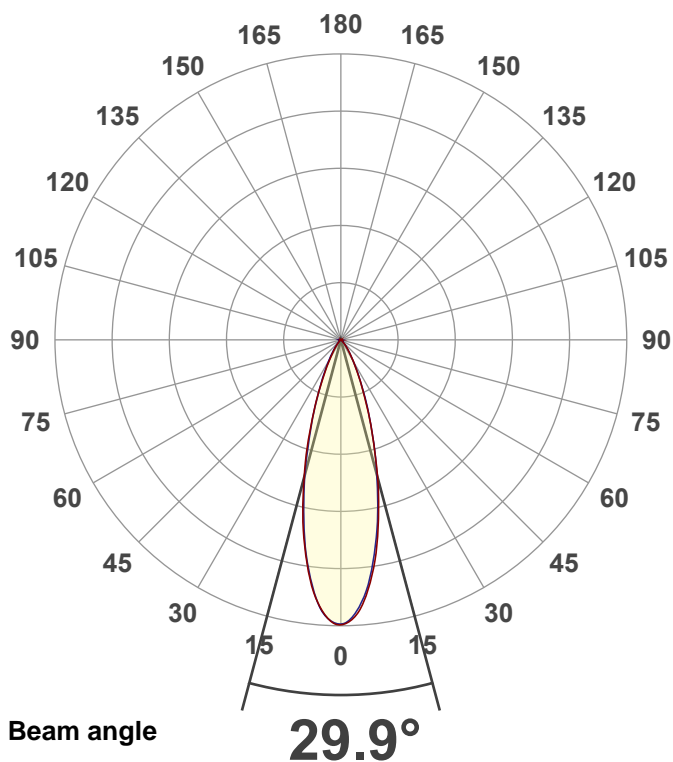
Power: 12.4 W

PF: 0.91



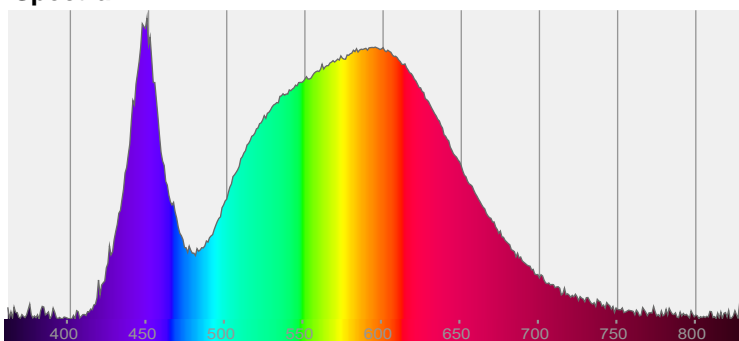
EXT-SKY-D-SW-10LM-40K-80-30D-24-BK-BK

Date and time:  
4/14/2021 4:07:25 PM

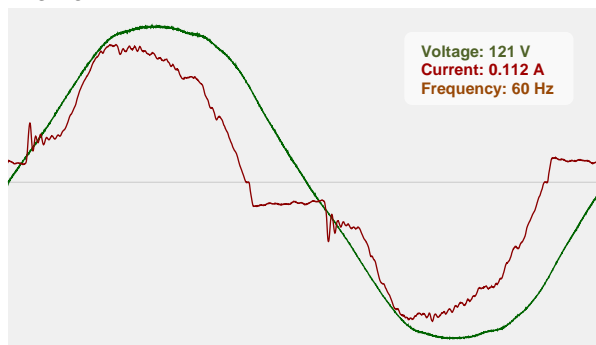


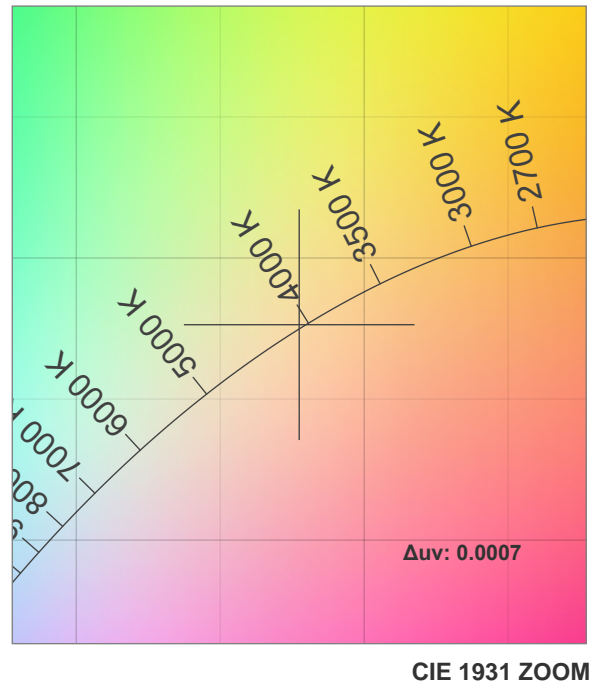
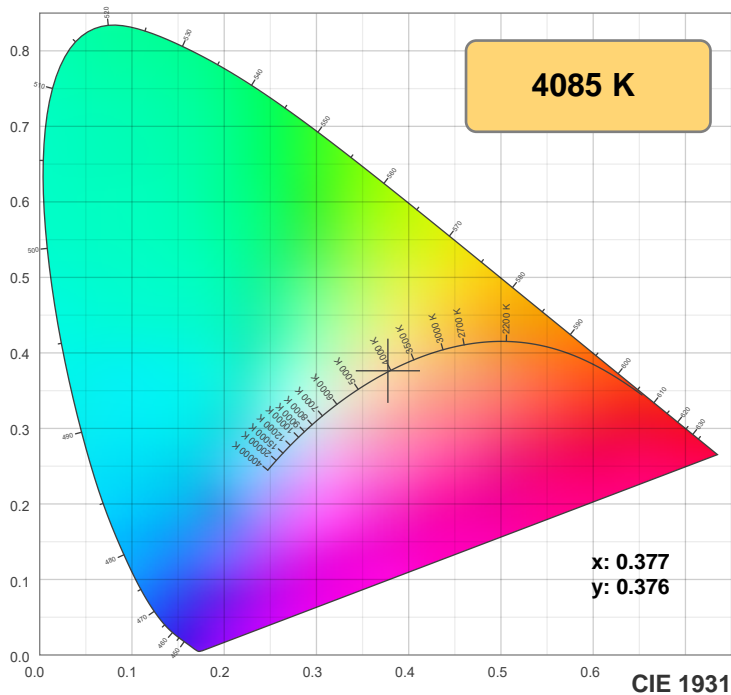
CIE 1931  
x: 0.377  
y: 0.376

Spectra

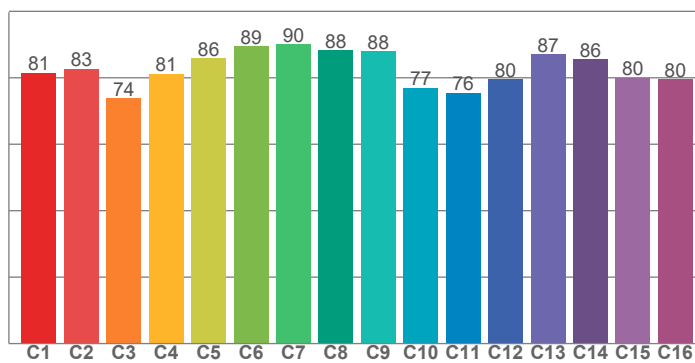


Power

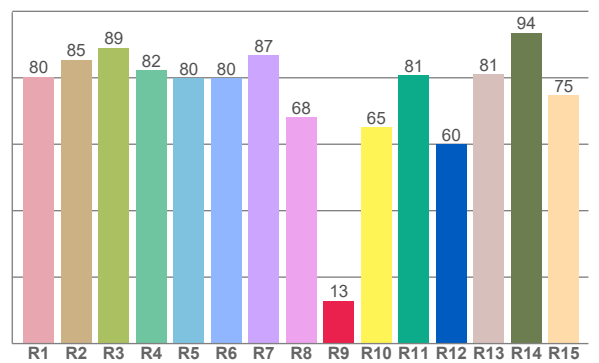




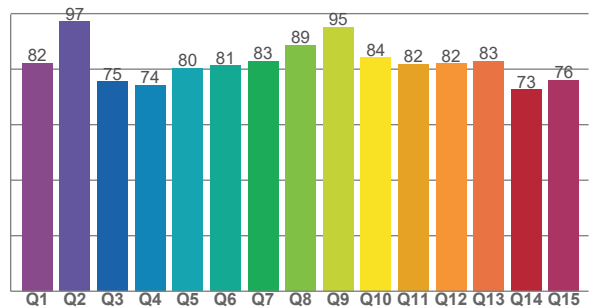
TM30: 82.4



CRI: 81.5 (R1-R8)



CQS: 81.2



CRI R values, only R1-R8 are used to calculate final CRI value

R1	R2	R3	R4	R5	R6	R7	R8	R9	R10	R11	R12	R13	R14	R15
80.3	85.5	89.1	82.3	79.9	79.9	86.8	68.1	12.9	65.0	80.7	59.9	81.1	93.6	74.7

TM30 C values, 16 binned values out of total of 99 C values

C1	C2	C3	C4	C5	C6	C7	C8	C9	C10	C11	C12	C13	C14	C15	C16
81.4	82.7	73.8	81.2	85.8	89.4	90.0	88.2	88.0	77.0	75.5	79.6	87.0	85.6	80.0	79.6

CQS Q values

Q1	Q2	Q3	Q4	Q5	Q6	Q7	Q8	Q9	Q10	Q11	Q12	Q13	Q14	Q15
82.3	97.2	75.5	74.4	80.3	81.3	82.9	88.6	95.3	84.2	81.7	82.0	82.9	72.7	76.1

## Color parameters

Color temperature	Color rendering index	Red component	Color fidelity	Color gamut	Color quality scale	Color coordinate cie 1931	Color coordinate cie 1931	Color coordinate	Color coordinate	Color deviation from black body
CCT	CRI	CRI R9	TM30 Rf	TM30 Rg	CQS	x	y	u	v	Δuv
4085 K	81.5	12.9	82.4	97.8	81.2	0.377	0.376	0.223	0.334	0.0007

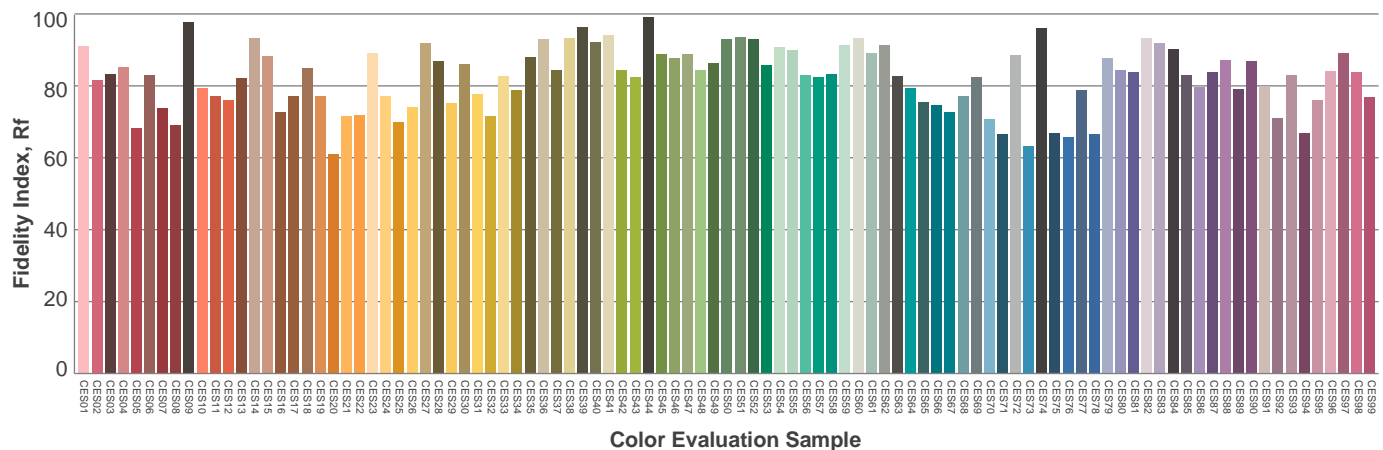
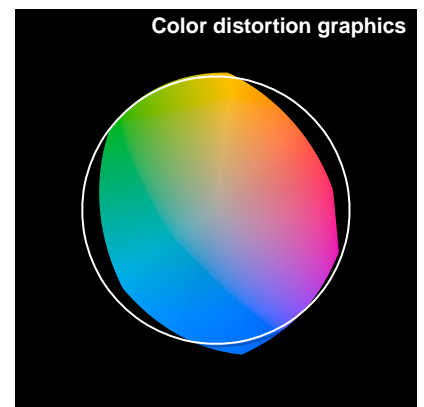
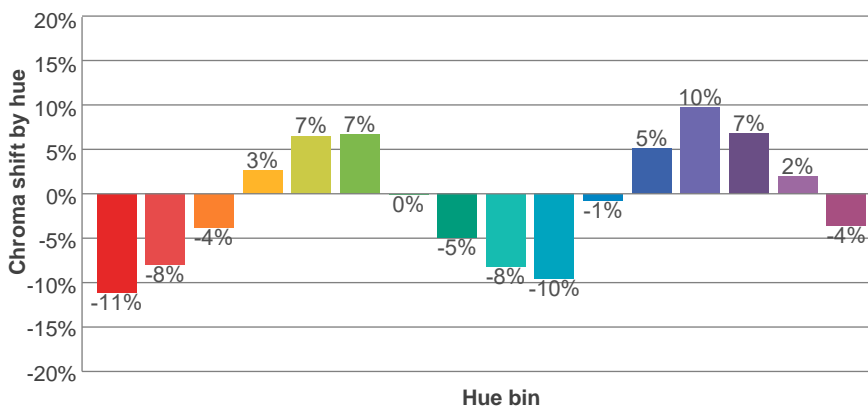
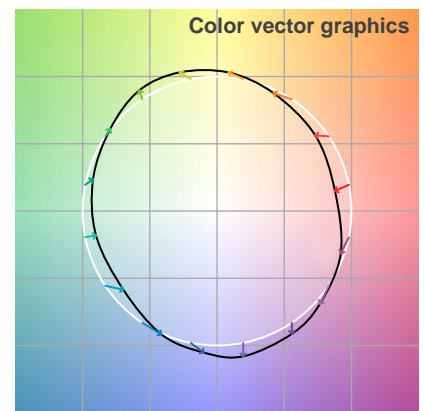
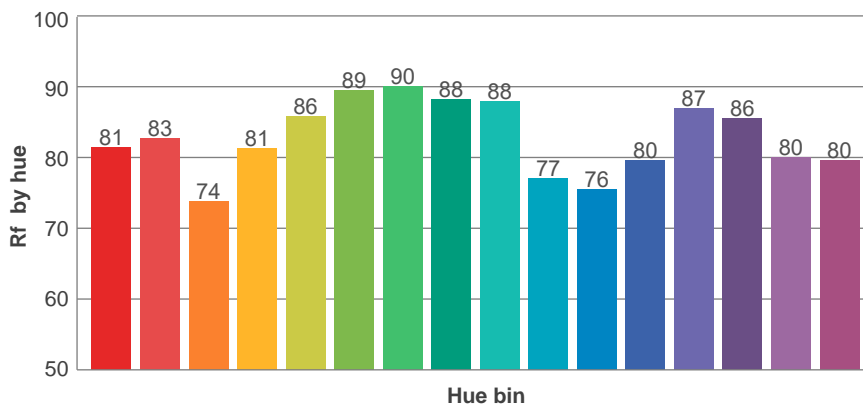
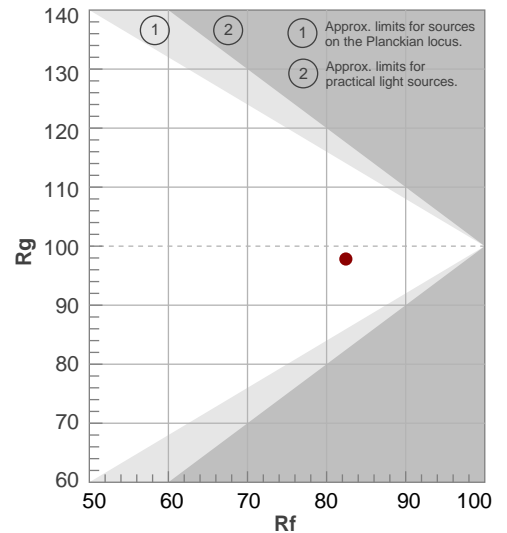
**Rf 82.4**

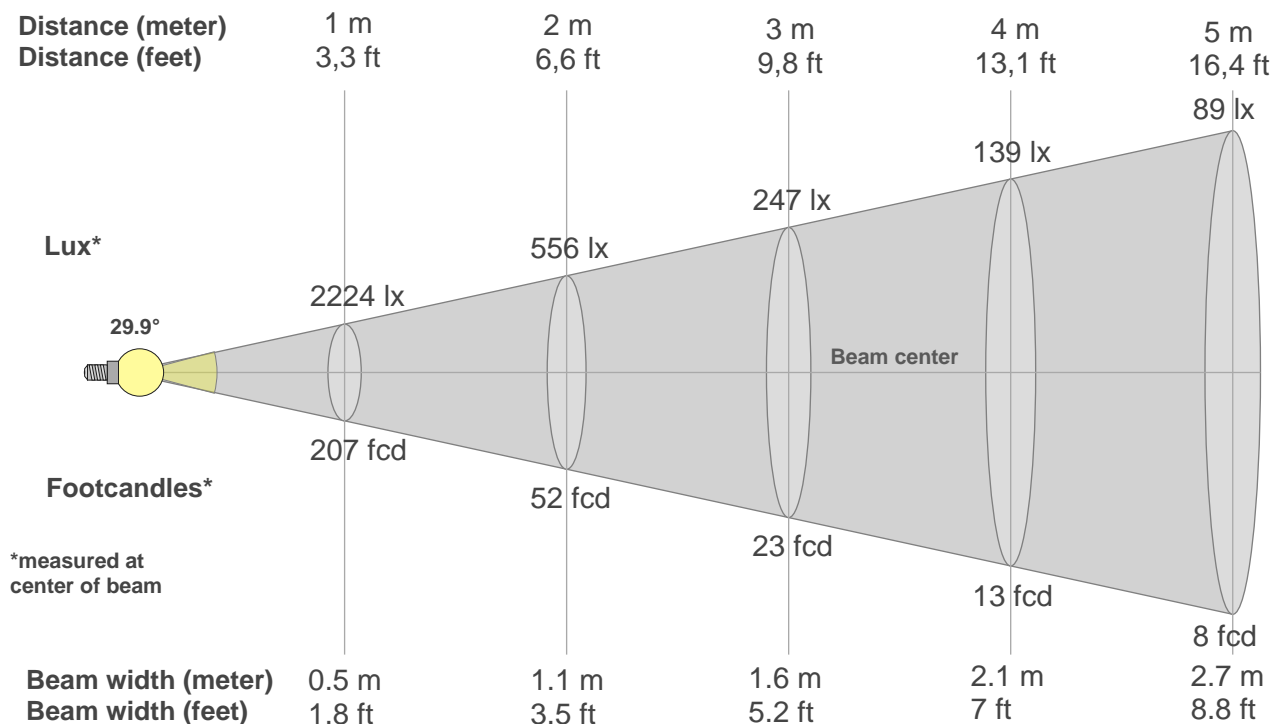
Fidelity index Rf

**Rg 97.8**

Gamut index Rg

Hue Bin	R <sub>f</sub>	Graphic shifts (%)	
		Chroma	Hue
1	81	-11%	-2%
2	83	-8%	6%
3	74	-4%	14%
4	81	3%	12%
5	86	7%	7%
6	89	7%	-2%
7	90	0%	-7%
8	88	-5%	-5%
9	88	-8%	0%
10	77	-10%	10%
11	76	-1%	16%
12	80	5%	11%
13	87	10%	-2%
14	86	7%	-4%
15	80	2%	-15%
16	80	-4%	-13%





#### Beam intensities from 1-20m

1m	2m	3m	4m	5m	6m	7m	8m	9m	10m	11m	12m	13m	14m	15m	16m	17m	18m	19m	20m
3.3ft	6.6ft	9.8ft	13.1ft	16.4ft	19.7ft	23ft	26.2ft	29.5ft	32.8ft	36.1ft	39.4ft	42.7ft	45.9ft	49.2ft	52.5ft	55.8ft	59.1ft	62.3ft	65.6ft
2224lx	556lx	247lx	139lx	89lx	62lx	45lx	35lx	27lx	22lx	18lx	15lx	13lx	11lx	10lx	9lx	8lx	7lx	6lx	6lx
206.6fcd	51.6fcd	23fcd	12.9fcd	8.3fcd	5.7fcd	4.2fcd	3.2fcd	2.6fcd	2.1fcd	1.7fcd	1.4fcd	1.2fcd	1.1fcd	0.9fcd	0.8fcd	0.7fcd	0.6fcd	0.6fcd	0.5fcd

#### Intensities in 0° c-plane

0°	2°	4°	6°	8°	10°	12°	14°	16°	18°	20°	22°	24°	26°	28°	30°	32°	34°	36°	38°
2224	2186	2136	1981	1826	1640	1433	1227	1032	836	678	542	414	337	259	204	160	120	95	71
100%	98%	96%	89%	82%	74%	64%	55%	46%	38%	30%	24%	19%	15%	12%	9%	7%	5%	4%	3%

#### Intensities in 90° c-plane

0°	2°	4°	6°	8°	10°	12°	14°	16°	18°	20°	22°	24°	26°	28°	30°	32°	34°	36°	38°
2224	2181	2082	1973	1786	1600	1404	1203	1006	842	679	547	435	330	265	200	155	121	88	69
100%	98%	94%	89%	80%	72%	63%	54%	45%	38%	31%	25%	20%	15%	12%	9%	7%	5%	4%	3%

#### Intensities in 180° c-plane

0°	2°	4°	6°	8°	10°	12°	14°	16°	18°	20°	22°	24°	26°	28°	30°	32°	34°	36°	38°
2224	2207	2111	2014	1833	1644	1445	1235	1025	846	671	522	408	294	232	173	128	100	73	57
100%	99%	95%	91%	82%	74%	65%	56%	46%	38%	30%	23%	18%	13%	10%	8%	6%	5%	3%	3%

#### Intensities in 270° c-plane

0°	2°	4°	6°	8°	10°	12°	14°	16°	18°	20°	22°	24°	26°	28°	30°	32°	34°	36°	38°
2224	2183	2143	1987	1818	1630	1415	1201	1008	816	653	525	397	322	250	192	152	111	88	66
100%	98%	96%	89%	82%	73%	64%	54%	45%	37%	29%	24%	18%	14%	11%	9%	7%	5%	4%	3%

Beam angle 50%	Field angle 10%	Cutoff angle 2,5%	Intensity ratio in 120° cone	Intensity ratio in 90° cone
{B_ANG}°	57.6°	78°	99.2%	98.2%