

Light efficiency:

53 Lumen/Watt

Light quality:

CRI: 80.2

Color temperature:

3948 K

Output: 656 lm

Peak: 5524 cd

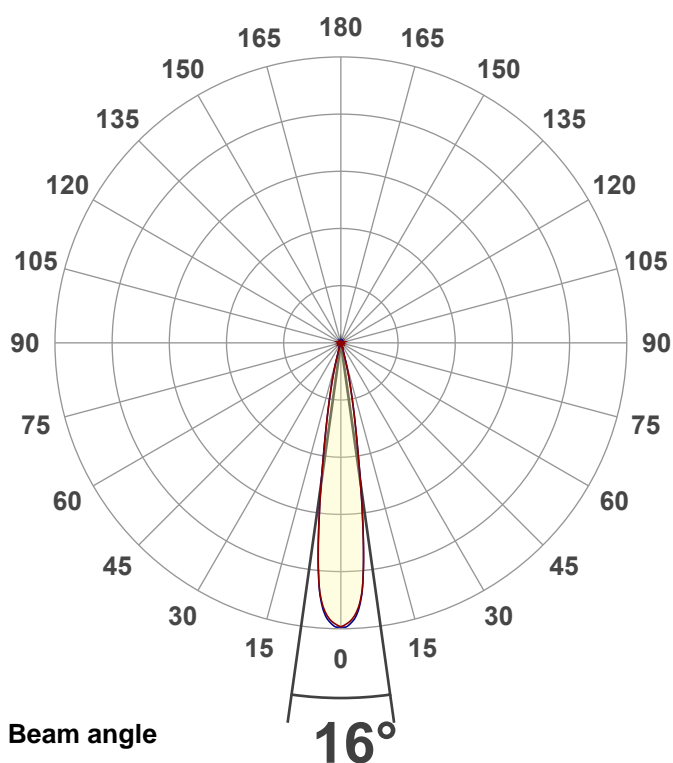
Power: 12.5 W

PF: 0.91



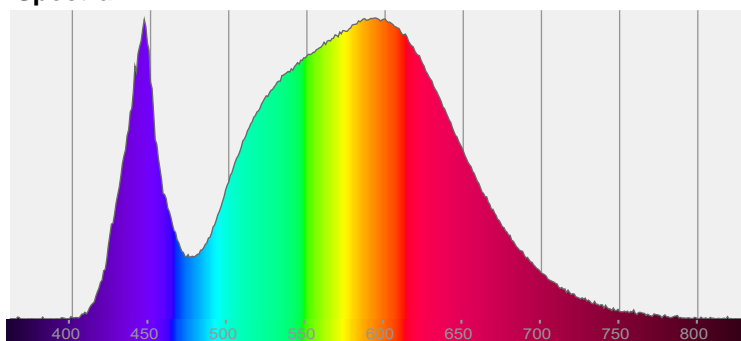
EXT-SKY-D-SW-10LM-40K-80-20D-24-BK-BK-OGLOBE

Date and time:
11/2/2021 2:35:39 PM

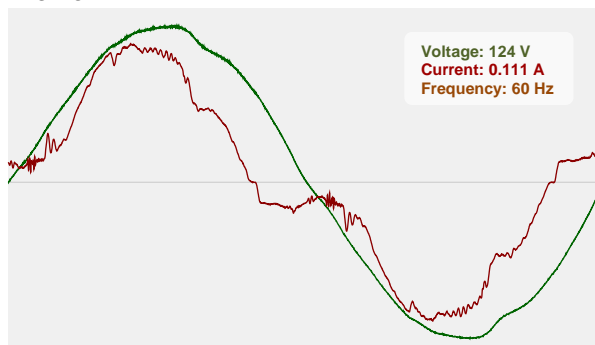


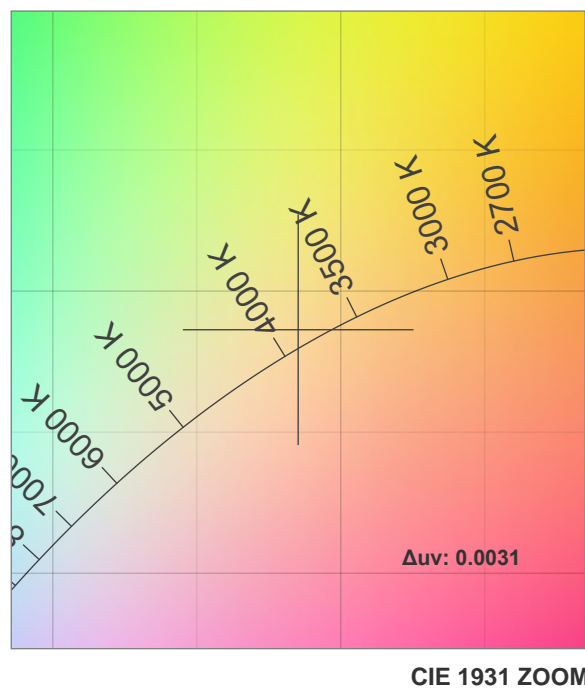
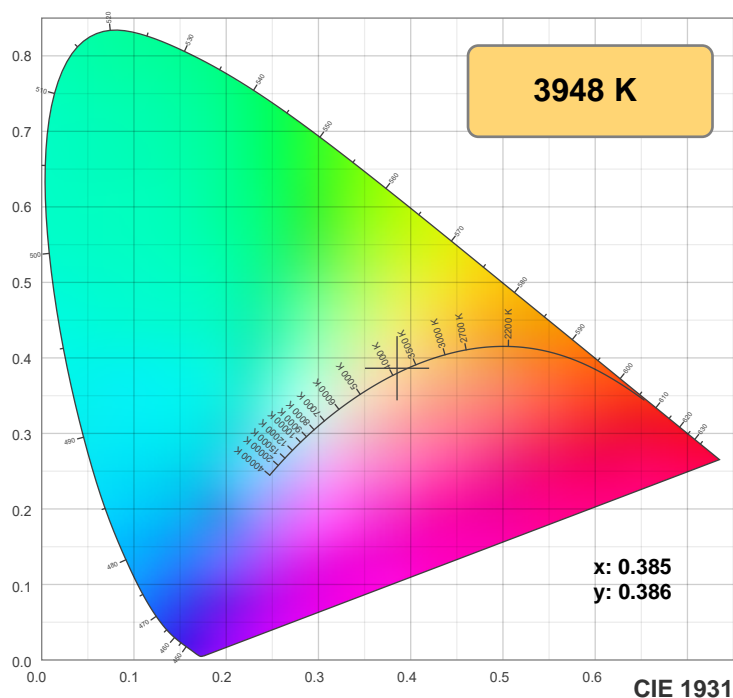
CIE 1931
x: 0.385
y: 0.386

Spectra

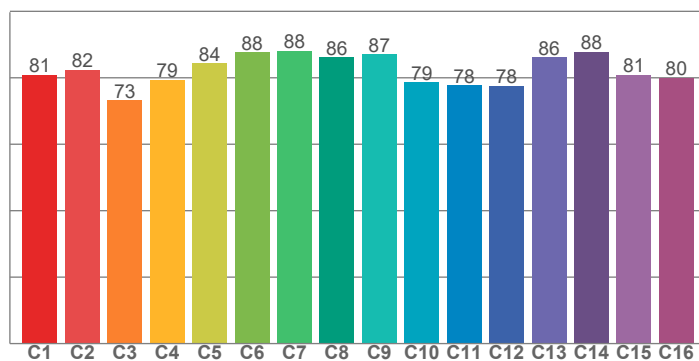


Power

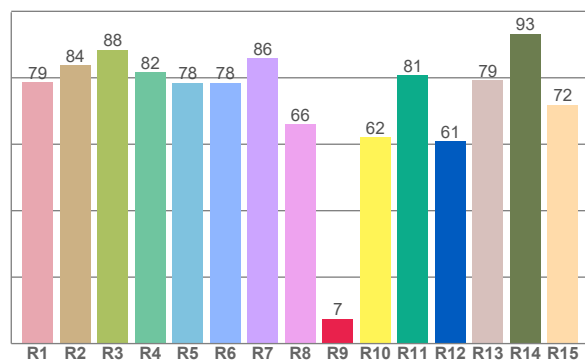




TM30: 82.0



CRI: 80.2 (R1-R8)



CRI R values, only R1-R8 are used to calculate final CRI value

R1	R2	R3	R4	R5	R6	R7	R8	R9	R10	R11	R12	R13	R14	R15
78.7	83.8	88.5	81.8	78.5	78.5	85.9	66.1	7.5	62.2	80.8	60.8	79.2	93.3	71.9

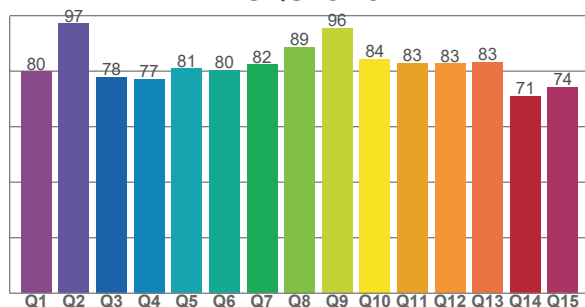
TM30 C values, 16 binned values out of total of 99 C values

C1	C2	C3	C4	C5	C6	C7	C8	C9	C10	C11	C12	C13	C14	C15	C16
80.9	82.4	73.2	79.4	84.4	87.7	88.1	86.2	87.0	78.6	77.8	77.6	86.1	87.9	80.8	80.0

CQS Q values

Q1	Q2	Q3	Q4	Q5	Q6	Q7	Q8	Q9	Q10	Q11	Q12	Q13	Q14	Q15
79.8	97.1	77.8	77.2	81.0	80.4	82.4	88.7	95.6	84.4	82.8	82.8	83.2	71.1	74.3

CQS: 81.3



Color parameters

Color temperature	Color rendering index	Red component	Color fidelity	Color gamut	Color quality scale	Color coordinate cie 1931	Color coordinate cie 1931	Color coordinate	Color coordinate	Color deviation from black body
CCT	CRI	CRI R9	TM30 Rf	TM30 Rg	CQS	x	y	u	v	Δuv
3948 K	80.2	7.5	82.0	98.2	81.3	0.385	0.386	0.224	0.338	0.0031

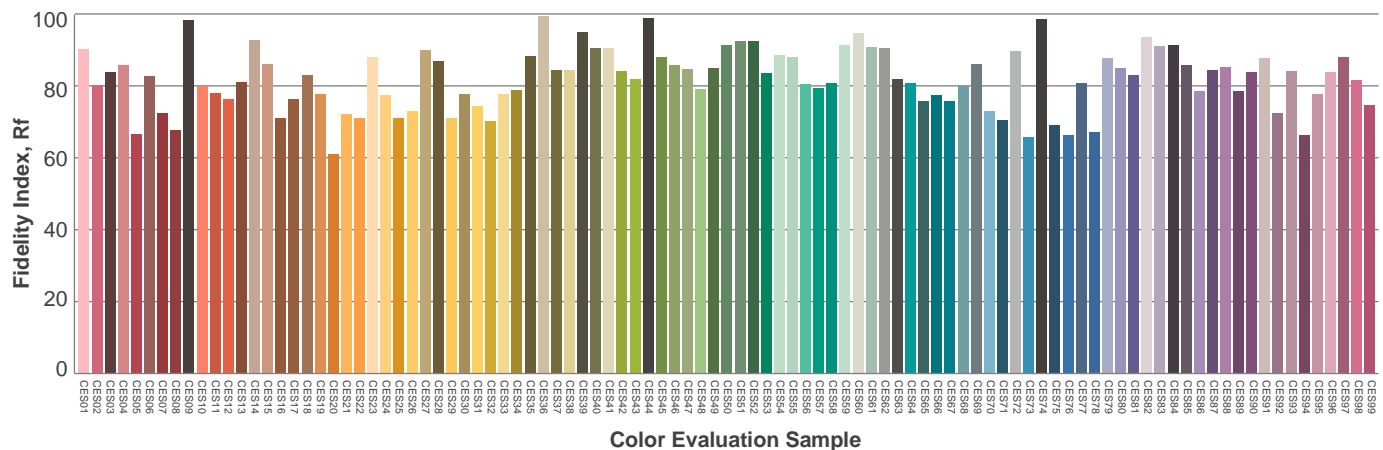
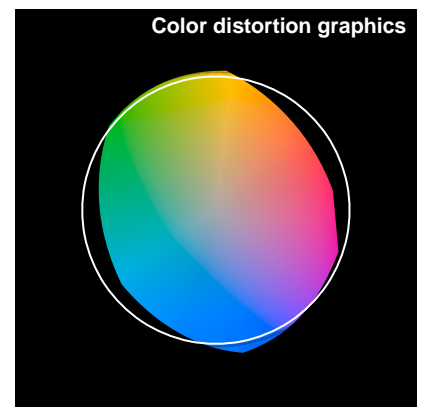
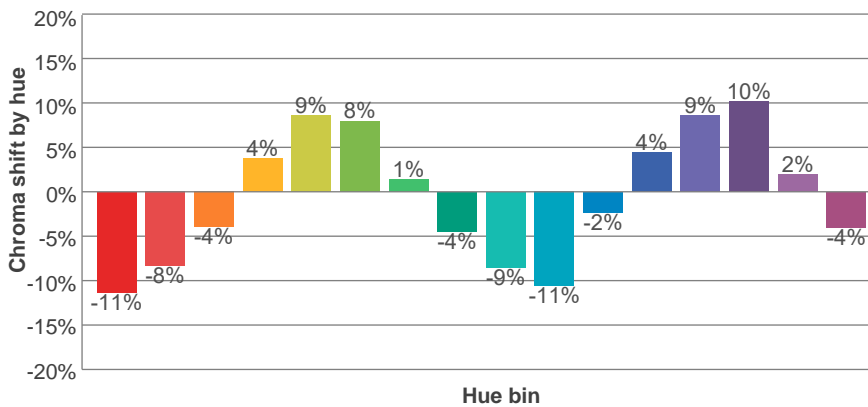
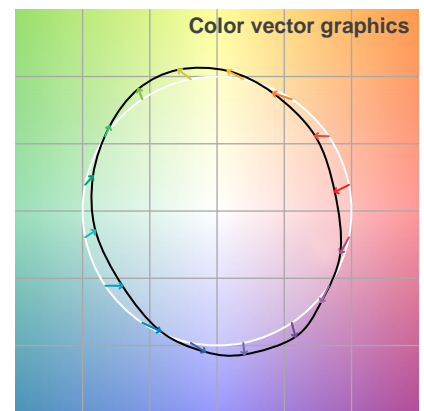
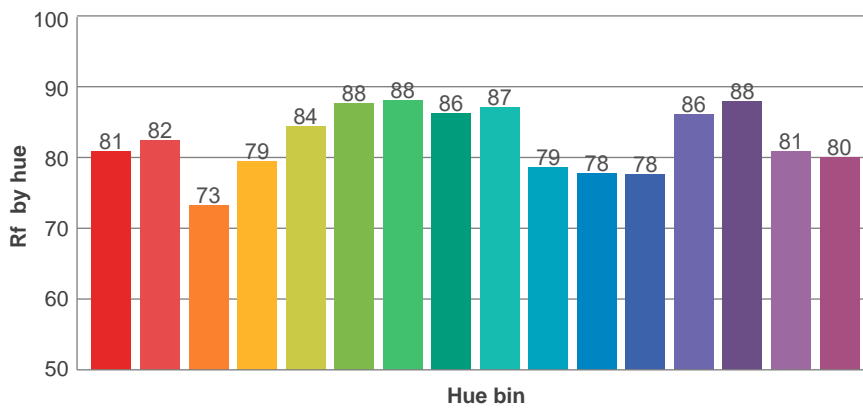
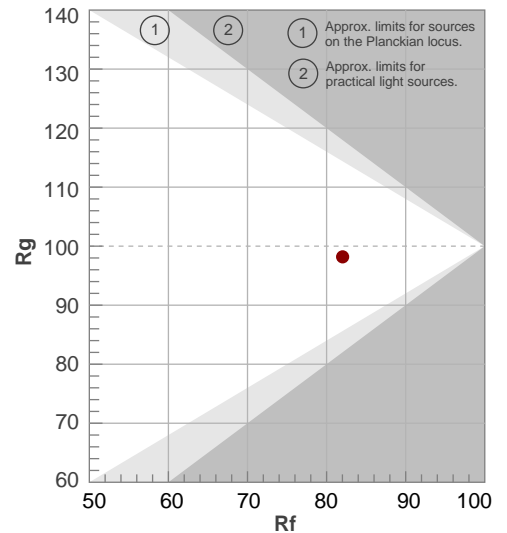
Rf 82.0

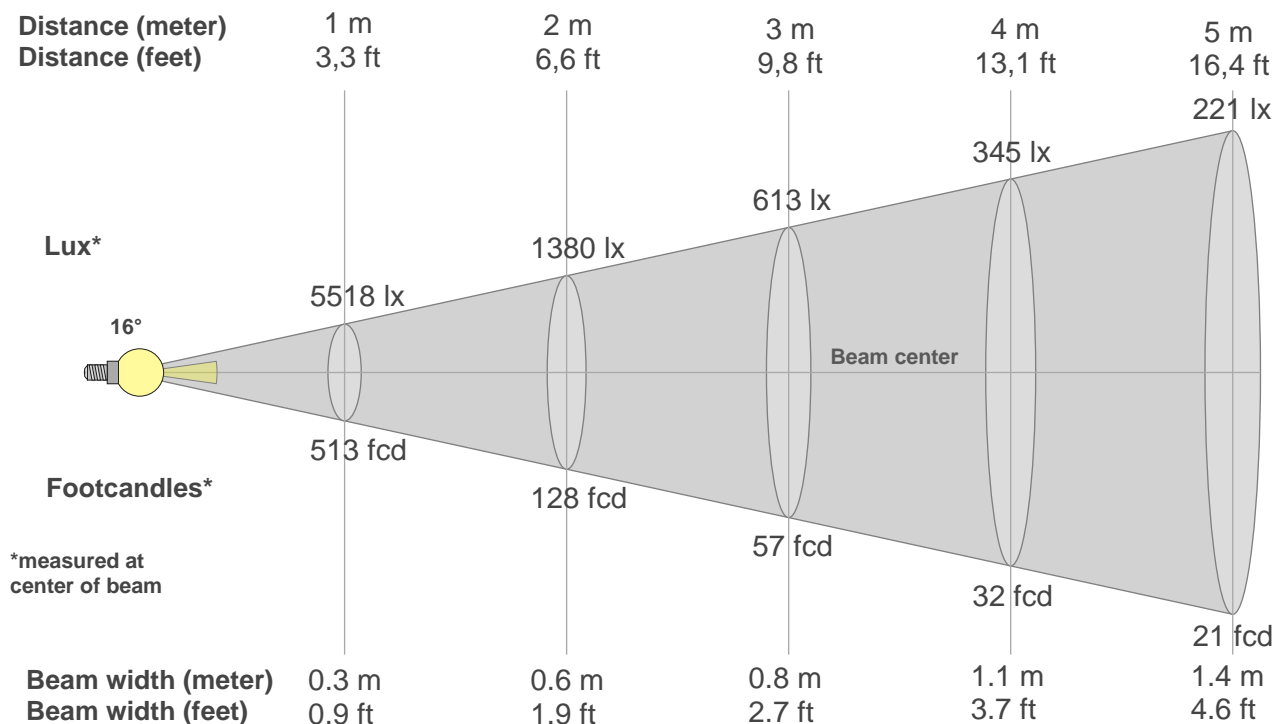
Fidelity index Rf

Rg 98.2

Gamut index Rg

Hue Bin	R _f	Graphic shifts (%)	
		Chroma	Hue
1	81	-11%	-3%
2	82	-8%	6%
3	73	-4%	14%
4	79	4%	13%
5	84	9%	8%
6	88	8%	-2%
7	88	1%	-8%
8	86	-4%	-8%
9	87	-9%	-3%
10	79	-11%	7%
11	78	-2%	15%
12	78	4%	12%
13	86	9%	-1%
14	88	10%	-4%
15	81	2%	-13%
16	80	-4%	-13%





Beam intensities from 1-20m

1m	2m	3m	4m	5m	6m	7m	8m	9m	10m	11m	12m	13m	14m	15m	16m	17m	18m	19m	20m
3.3ft	6.6ft	9.8ft	13.1ft	16.4ft	19.7ft	23ft	26.2ft	29.5ft	32.8ft	36.1ft	39.4ft	42.7ft	45.9ft	49.2ft	52.5ft	55.8ft	59.1ft	62.3ft	65.6ft
5518lx	1380lx	613lx	345lx	221lx	153lx	113lx	86lx	68lx	55lx	46lx	38lx	33lx	28lx	25lx	22lx	19lx	17lx	15lx	14lx
512.7fc	128.2fc	57fcd	32fcd	20.5fcd	14.2fcd	10.5fcd	8fcd	6.3fcd	5.1fcd	4.2fcd	3.6fcd	3fcd	2.6fcd	2.3fcd	2fcd	1.8fcd	1.6fcd	1.4fcd	1.3fcd

Intensities in 0° c-plane

0°	1°	2°	3°	4°	5°	6°	7°	8°	9°	10°	11°	12°	13°	14°	15°	16°	17°	18°	19°
5518	5468	5399	5284	5096	4780	4223	3496	2732	2085	1624	1264	961	724	499	309	194	145	113	88
100%	99%	98%	96%	92%	87%	77%	63%	50%	38%	29%	23%	17%	13%	9%	6%	4%	3%	2%	2%

Intensities in 90° c-plane

0°	1°	2°	3°	4°	5°	6°	7°	8°	9°	10°	11°	12°	13°	14°	15°	16°	17°	18°	19°
5518	5518	5451	5343	5143	4794	4200	3473	2751	2115	1620	1239	943	705	487	303	194	144	113	91
100%	100%	99%	97%	93%	87%	76%	63%	50%	38%	29%	22%	17%	13%	9%	5%	4%	3%	2%	2%

Intensities in 180° c-plane

0°	1°	2°	3°	4°	5°	6°	7°	8°	9°	10°	11°	12°	13°	14°	15°	16°	17°	18°	19°
5518	5468	5399	5284	5096	4780	4223	3496	2732	2085	1624	1264	961	724	499	309	194	145	113	88
100%	99%	98%	96%	92%	87%	77%	63%	50%	38%	29%	23%	17%	13%	9%	6%	4%	3%	2%	2%

Intensities in 270° c-plane

0°	1°	2°	3°	4°	5°	6°	7°	8°	9°	10°	11°	12°	13°	14°	15°	16°	17°	18°	19°
5518	5518	5451	5343	5143	4794	4200	3473	2751	2115	1620	1239	943	705	487	303	194	144	113	91
100%	100%	99%	97%	93%	87%	76%	63%	50%	38%	29%	22%	17%	13%	9%	5%	4%	3%	2%	2%

Beam angle 50%	Field angle 10%	Cutoff angle 2,5%	Intensity ratio in 120° cone	Intensity ratio in 90° cone
{B_ANG}°	27.4°	34.3°	84.6%	78.5%