

Light efficiency:

47 Lumen/Watt

Light quality:

CRI: 79.9

Color temperature:

3953 K

Output: 585 lm

Peak: 1583 cd

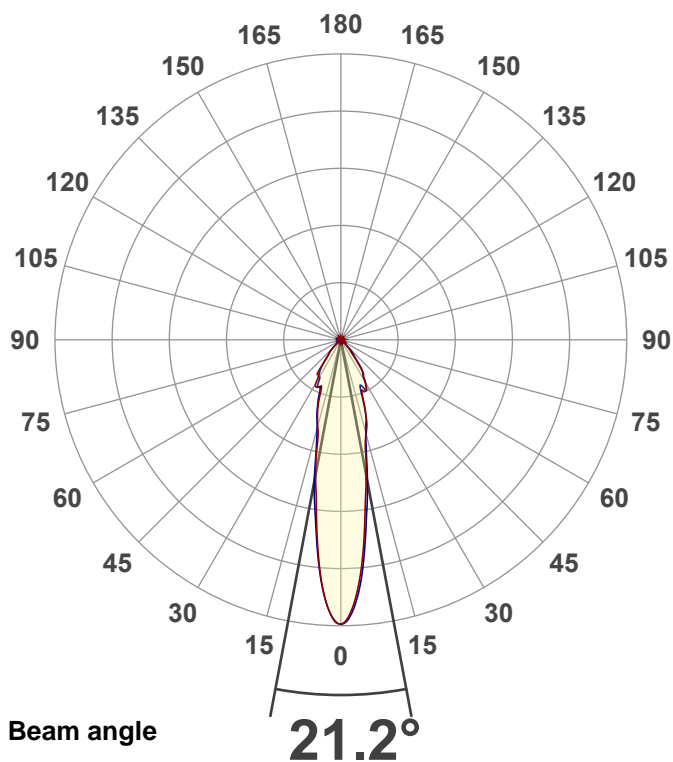
Power: 12.4 W

PF: 0.91



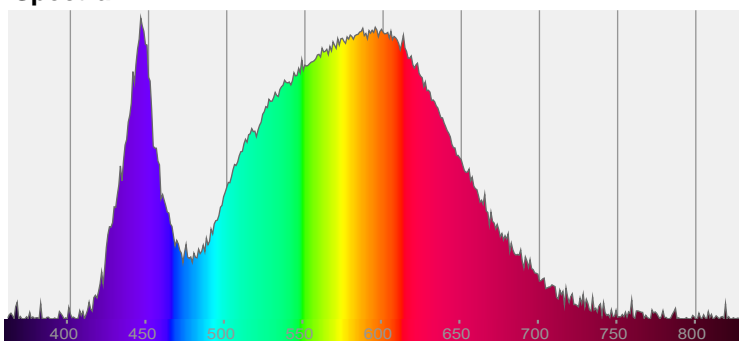
EXT-SKY-D-SW-10LM-40K-80-20D-24-BK-BK-PRISM

Date and time:
11/2/2021 11:30:16 AM

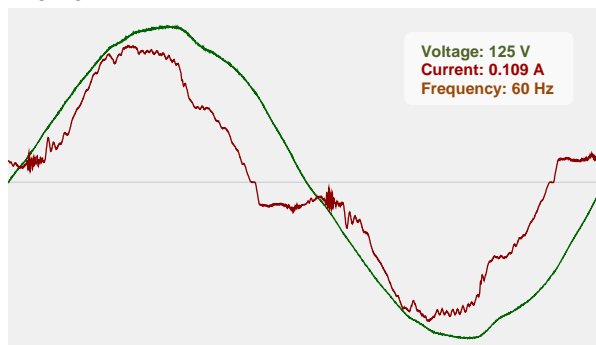


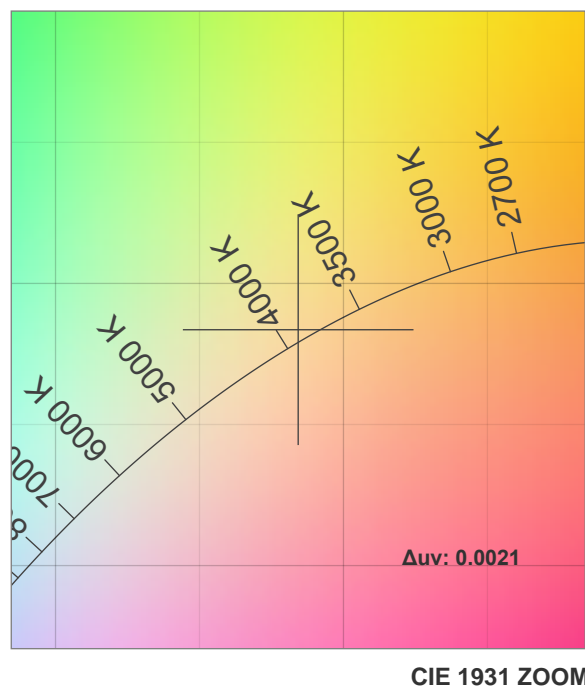
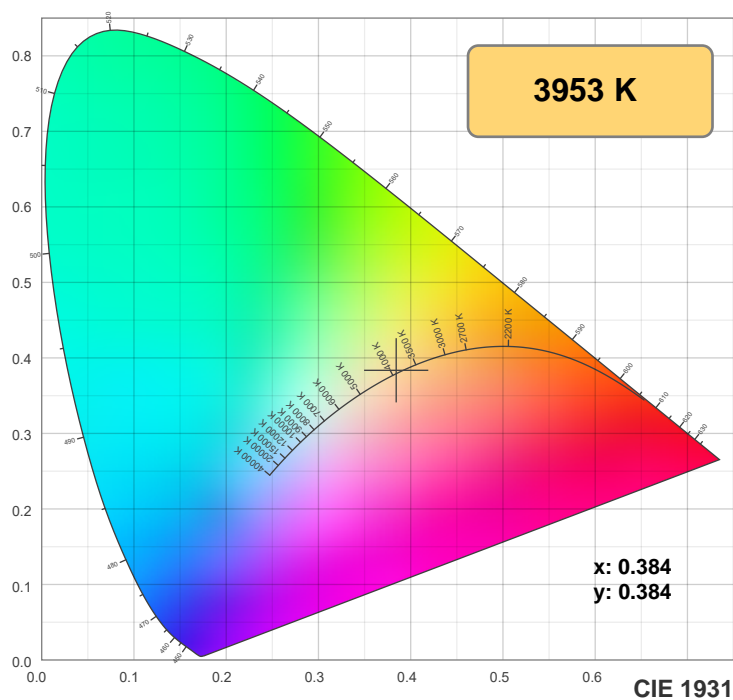
CIE 1931
x: 0.384
y: 0.384

Spectra



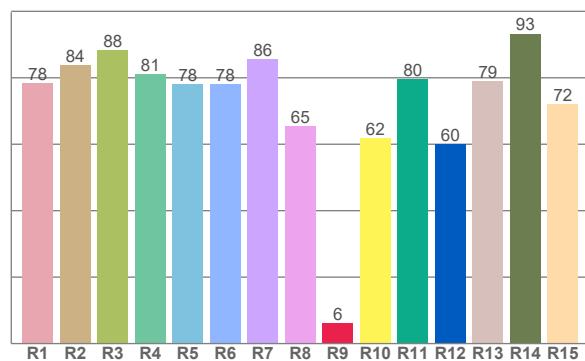
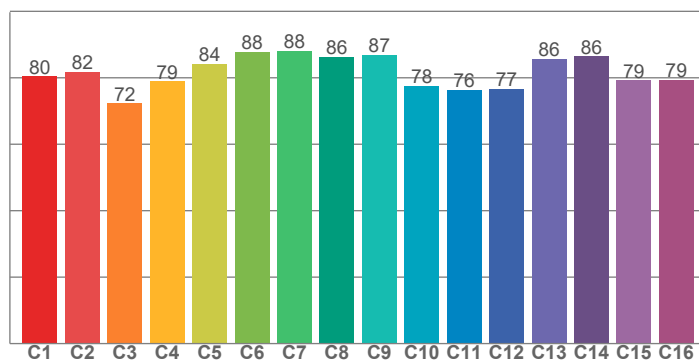
Power





TM30: 81.5

CRI: 79.9 (R1-R8)



CRI R values, only R1-R8 are used to calculate final CRI value

R1	R2	R3	R4	R5	R6	R7	R8	R9	R10	R11	R12	R13	R14	R15
78.4	83.9	88.4	81.1	78.1	78.1	85.6	65.4	6.1	61.9	79.6	60.0	78.9	93.2	72.0

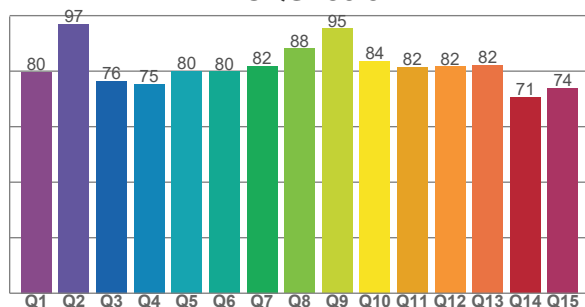
TM30 C values, 16 binned values out of total of 99 C values

C1	C2	C3	C4	C5	C6	C7	C8	C9	C10	C11	C12	C13	C14	C15	C16
80.4	81.8	72.2	79.0	84.2	87.7	88.1	86.3	86.9	77.5	76.4	76.6	85.7	86.5	79.2	79.3

CQS Q values

Q1	Q2	Q3	Q4	Q5	Q6	Q7	Q8	Q9	Q10	Q11	Q12	Q13	Q14	Q15
79.7	97.0	76.4	75.4	80.0	79.8	81.8	88.1	95.4	83.7	81.5	81.6	82.2	70.6	73.9

CQS: 80.5



Color parameters

Color temperature	Color rendering index	Red component	Color fidelity	Color gamut	Color quality scale	Color coordinate cie 1931	Color coordinate cie 1931	Color coordinate	Color coordinate	Color deviation from black body
CCT	CRI	CRI R9	TM30 Rf	TM30 Rg	CQS	x	y	u	v	Δuv
3953 K	79.9	6.1	81.5	98.0	80.5	0.384	0.384	0.225	0.337	0.0021

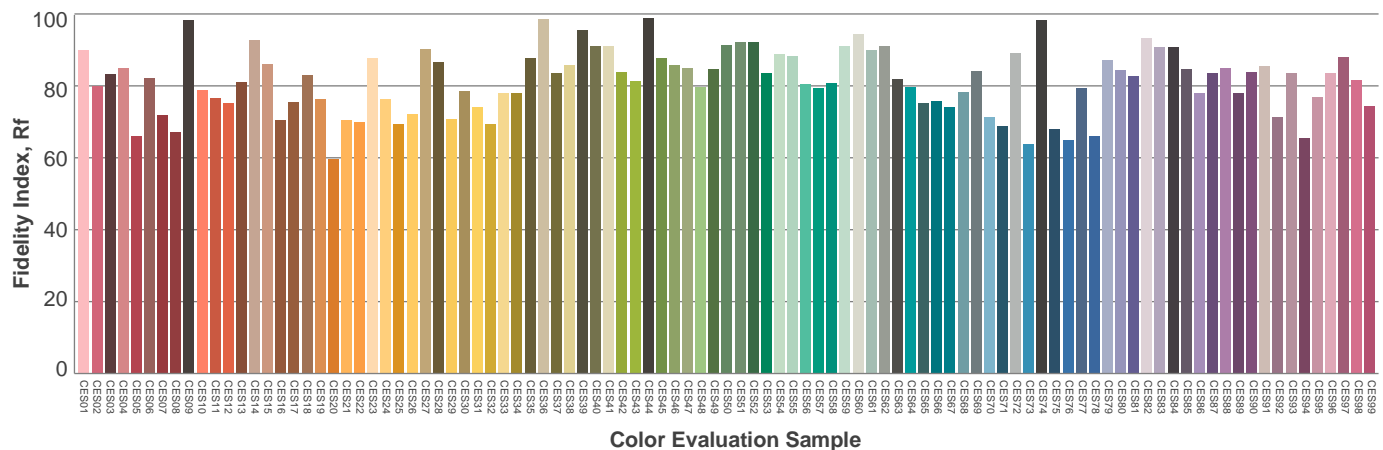
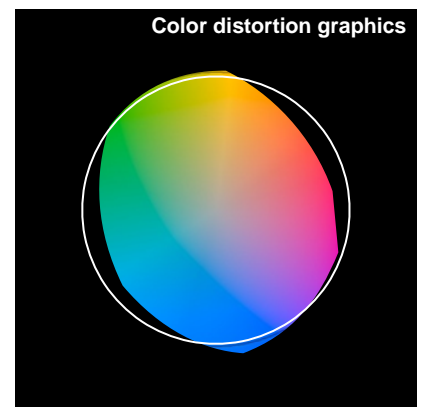
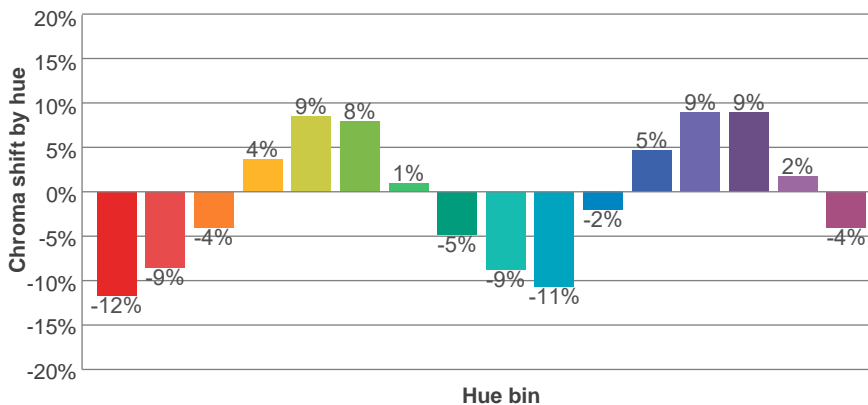
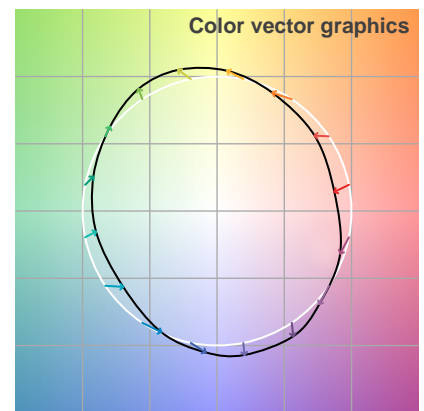
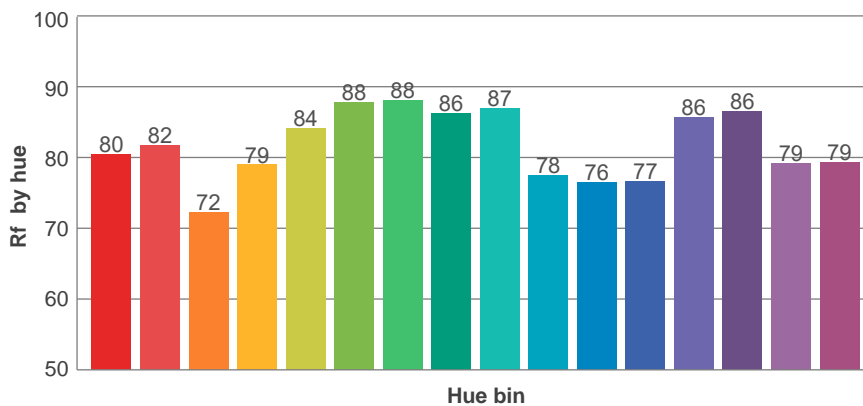
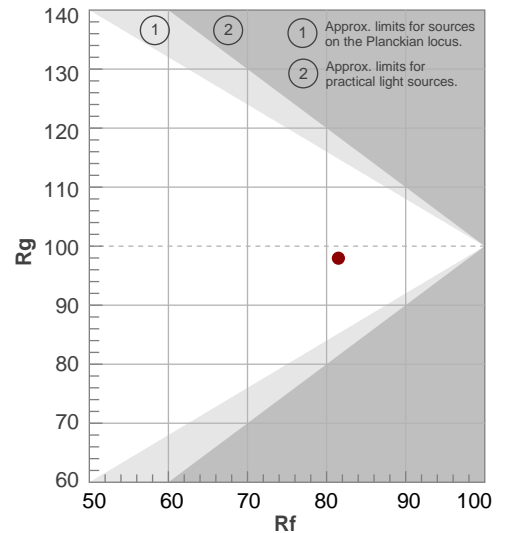
Rf 81.5

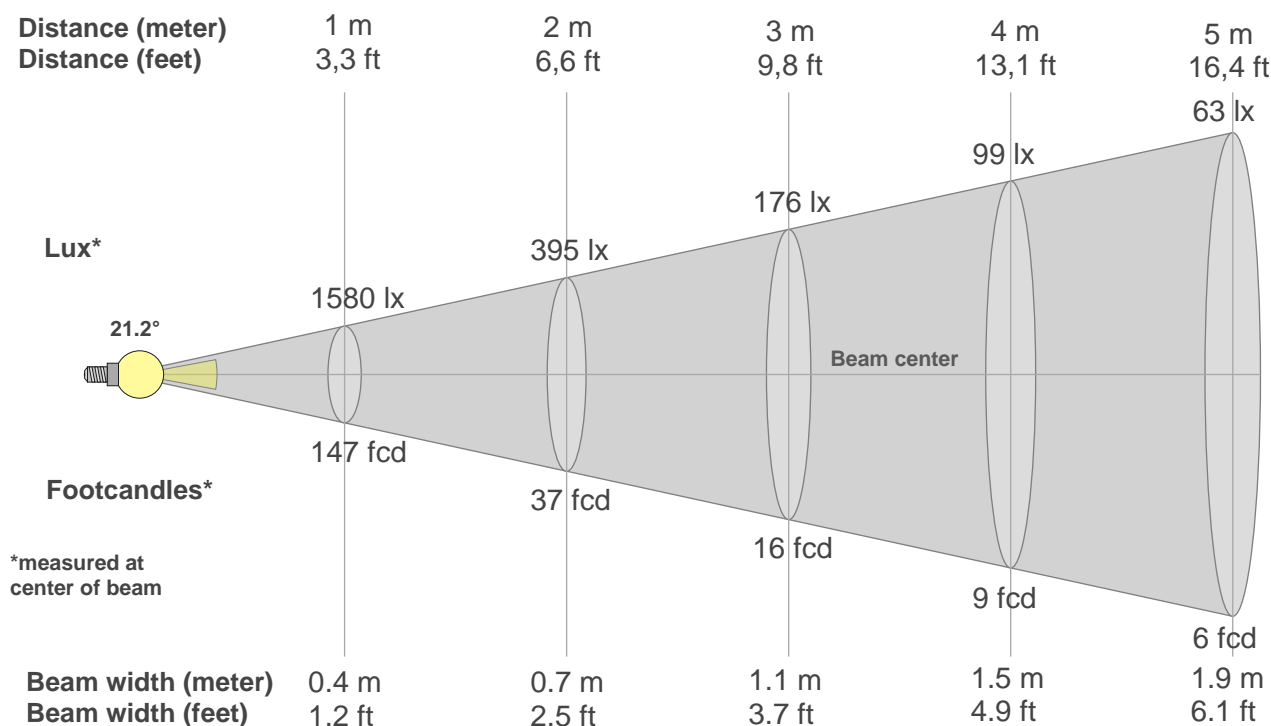
Fidelity index Rf

Rg 98.0

Gamut index Rg

Hue Bin	R _f	Graphic shifts (%)	
		Chroma	Hue
1	80	-12%	-3%
2	82	-9%	6%
3	72	-4%	15%
4	79	4%	13%
5	84	9%	8%
6	88	8%	-2%
7	88	1%	-8%
8	86	-5%	-7%
9	87	-9%	-3%
10	78	-11%	8%
11	76	-2%	16%
12	77	5%	12%
13	86	9%	-1%
14	86	9%	-5%
15	79	2%	-15%
16	79	-4%	-13%





Beam intensities from 1-20m

1m	2m	3m	4m	5m	6m	7m	8m	9m	10m	11m	12m	13m	14m	15m	16m	17m	18m	19m	20m
3.3ft	6.6ft	9.8ft	13.1ft	16.4ft	19.7ft	23ft	26.2ft	29.5ft	32.8ft	36.1ft	39.4ft	42.7ft	45.9ft	49.2ft	52.5ft	55.8ft	59.1ft	62.3ft	65.6ft
1580lx	395lx	176lx	99lx	63lx	44lx	32lx	25lx	20lx	16lx	13lx	11lx	9lx	8lx	7lx	6lx	5lx	5lx	4lx	4lx
146.8fcd	36.7fcd	16.3fcd	9.2fcd	5.9fcd	4.1fcd	3fcd	2.3fcd	1.8fcd	1.5fcd	1.2fcd	1fcd	0.9fcd	0.7fcd	0.7fcd	0.6fcd	0.5fcd	0.5fcd	0.4fcd	0.4fcd

Intensities in 0° c-plane

0°	2°	4°	6°	8°	10°	12°	14°	16°	18°	20°	22°	24°	26°	28°	30°	32°	34°	36°	38°
1580	1519	1378	1183	971	808	672	567	504	452	378	311	312	316	300	267	238	220	169	124
100%	96%	87%	75%	61%	51%	43%	36%	32%	29%	24%	20%	20%	20%	19%	17%	15%	14%	11%	8%

Intensities in 90° c-plane

0°	2°	4°	6°	8°	10°	12°	14°	16°	18°	20°	22°	24°	26°	28°	30°	32°	34°	36°	38°
1580	1534	1409	1223	1019	851	695	577	519	458	365	288	279	308	304	272	231	218	189	140
100%	97%	89%	77%	64%	54%	44%	37%	33%	29%	23%	18%	18%	19%	19%	17%	15%	14%	12%	9%

Intensities in 180° c-plane

0°	2°	4°	6°	8°	10°	12°	14°	16°	18°	20°	22°	24°	26°	28°	30°	32°	34°	36°	38°
1580	1535	1400	1201	978	808	661	524	473	419	357	291	284	294	296	275	232	232	194	142
100%	97%	89%	76%	62%	51%	42%	33%	30%	27%	23%	18%	18%	19%	19%	17%	15%	15%	12%	9%

Intensities in 270° c-plane

0°	2°	4°	6°	8°	10°	12°	14°	16°	18°	20°	22°	24°	26°	28°	30°	32°	34°	36°	38°
1580	1531	1403	1216	1015	855	677	554	480	430	375	314	285	292	261	238	234	207	174	131
100%	97%	89%	77%	64%	54%	43%	35%	30%	27%	24%	20%	18%	18%	17%	15%	15%	13%	11%	8%

Beam angle 50%	Field angle 10%	Cutoff angle 2,5%	Intensity ratio in 120° cone	Intensity ratio in 90° cone
{B_ANG}°	72°	92.9°	95.5%	91.4%