

Light efficiency:

41 Lumen/Watt

Light quality:

CRI: 80.3

Color temperature:

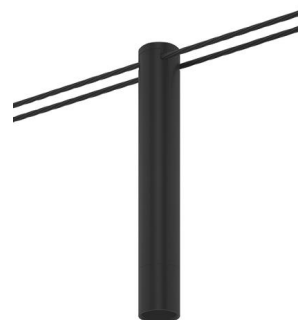
3963 K

Output: 512 lm

Peak: 5583 cd

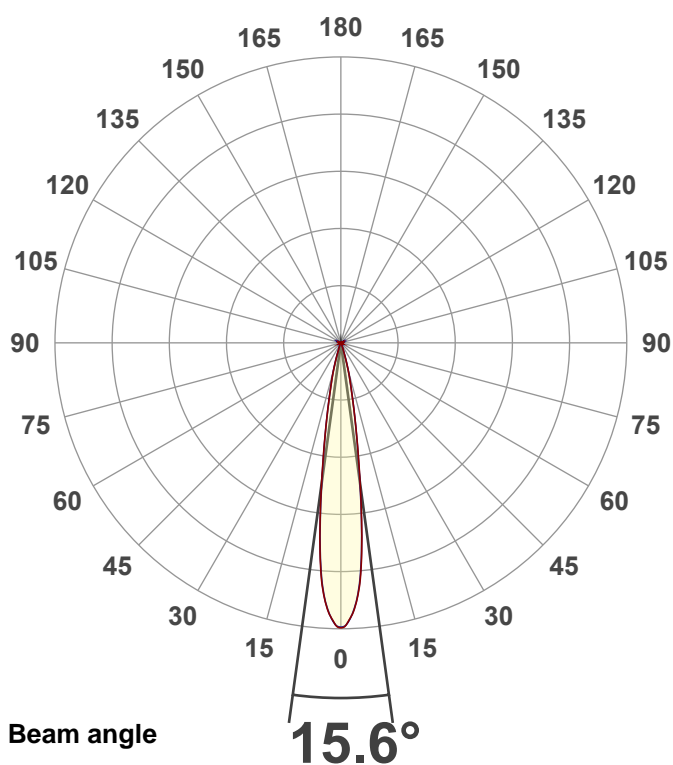
Power: 12.5 W

PF: 0.91



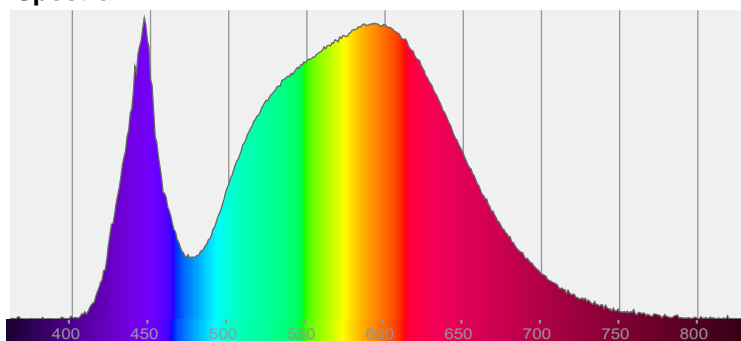
EXT-SKY-D-SW-10LM-40K-80-20D-24-BK-BK-SNOOT

Date and time:  
11/2/2021 10:29:48 AM

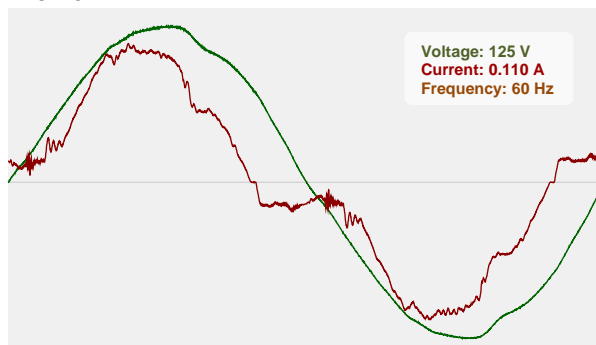


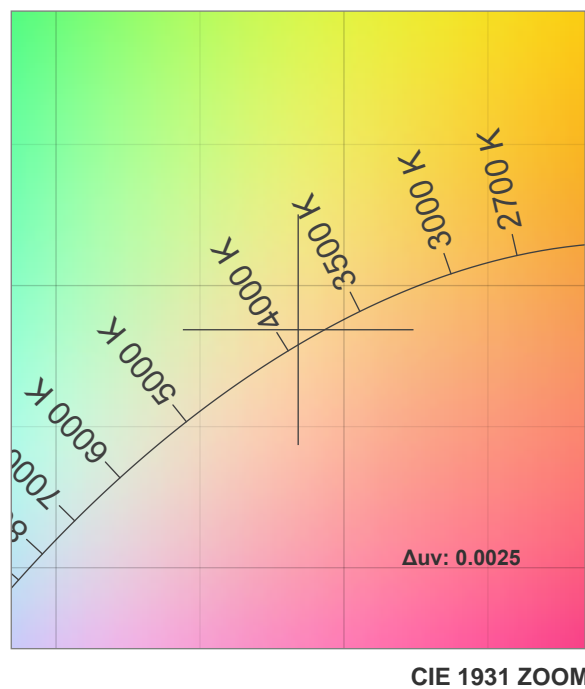
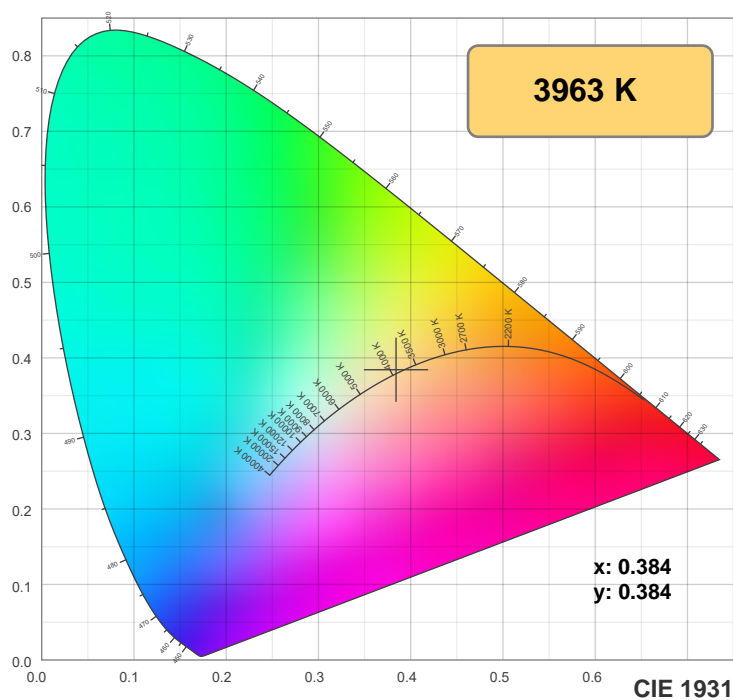
CIE 1931  
x: 0.384  
y: 0.384

Spectra

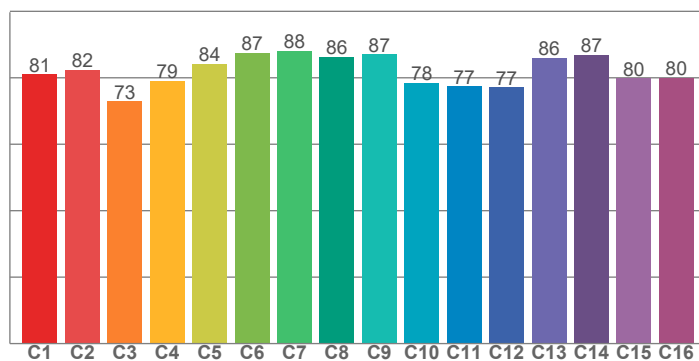


Power

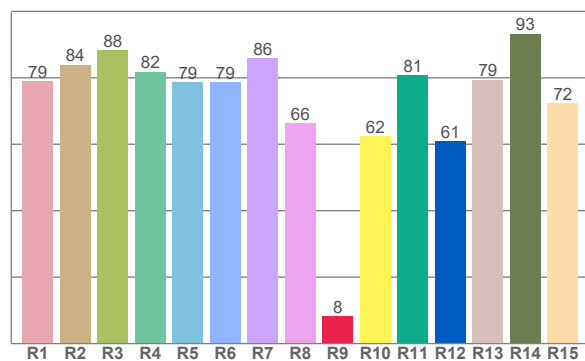




TM30: 81.9



CRI: 80.3 (R1-R8)



CRI R values, only R1-R8 are used to calculate final CRI value

R1	R2	R3	R4	R5	R6	R7	R8	R9	R10	R11	R12	R13	R14	R15
78.9	83.9	88.3	81.8	78.7	78.6	85.8	66.3	8.2	62.3	80.8	61.0	79.4	93.2	72.3

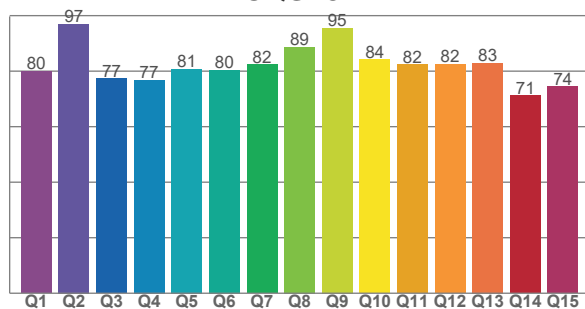
TM30 C values, 16 binned values out of total of 99 C values

C1	C2	C3	C4	C5	C6	C7	C8	C9	C10	C11	C12	C13	C14	C15	C16
81.0	82.3	72.9	79.1	84.1	87.5	88.0	86.3	87.1	78.5	77.4	77.1	86.0	86.9	79.9	80.1

CQS Q values

Q1	Q2	Q3	Q4	Q5	Q6	Q7	Q8	Q9	Q10	Q11	Q12	Q13	Q14	Q15
79.9	96.9	77.3	76.8	80.9	80.3	82.3	88.7	95.5	84.1	82.4	82.5	83.0	71.2	74.4

CQS: 81.2



## Color parameters

Color temperature	Color rendering index	Red component	Color fidelity	Color gamut	Color quality scale	Color coordinate cie 1931	Color coordinate cie 1931	Color coordinate	Color coordinate	Color deviation from black body
CCT	CRI	CRI R9	TM30 Rf	TM30 Rg	CQS	x	y	u	v	Δuv
3963 K	80.3	8.2	81.9	98.2	81.2	0.384	0.384	0.224	0.337	0.0025

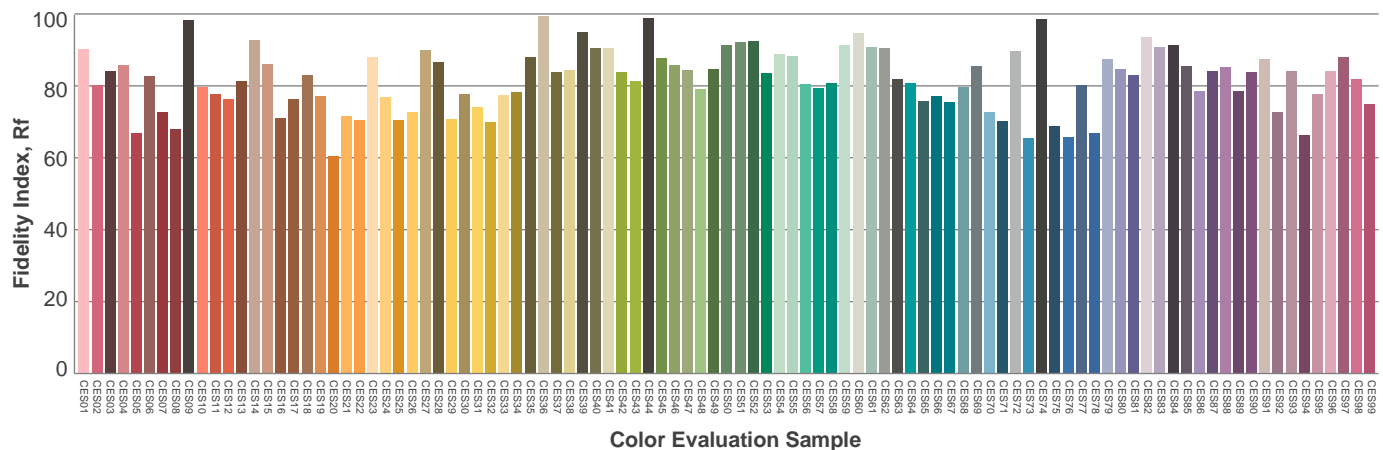
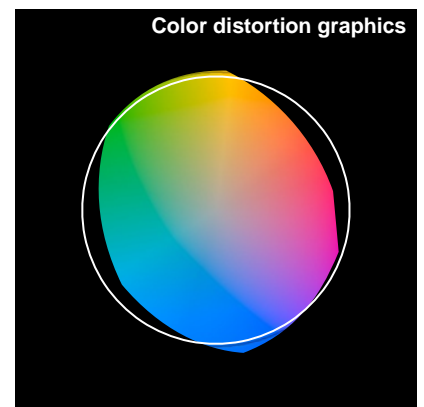
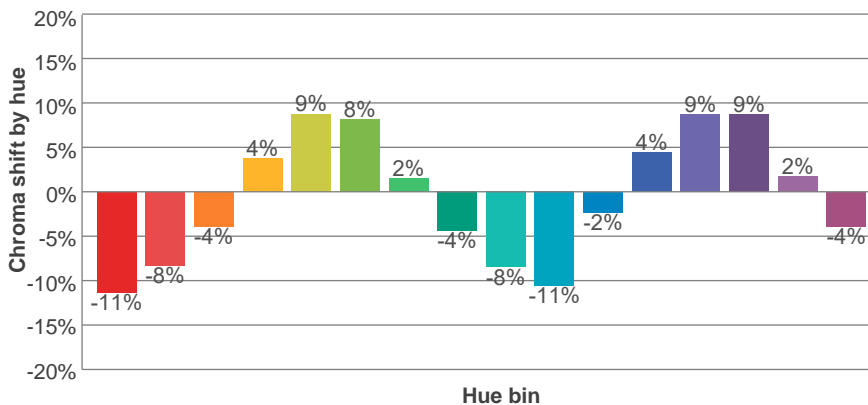
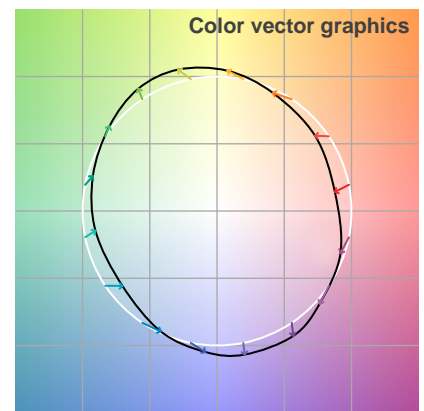
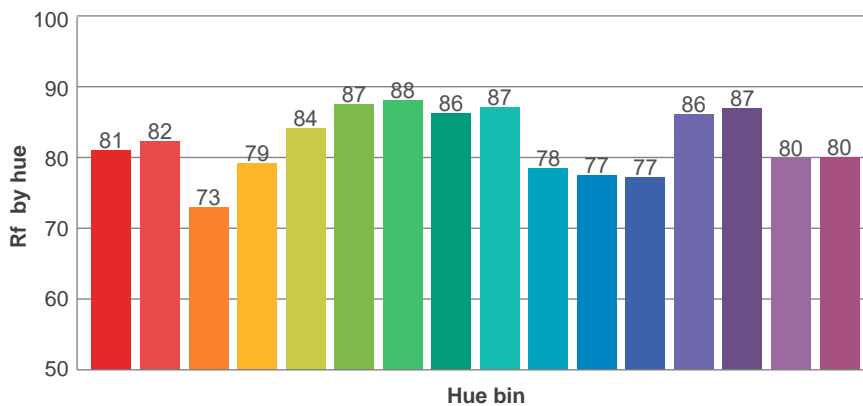
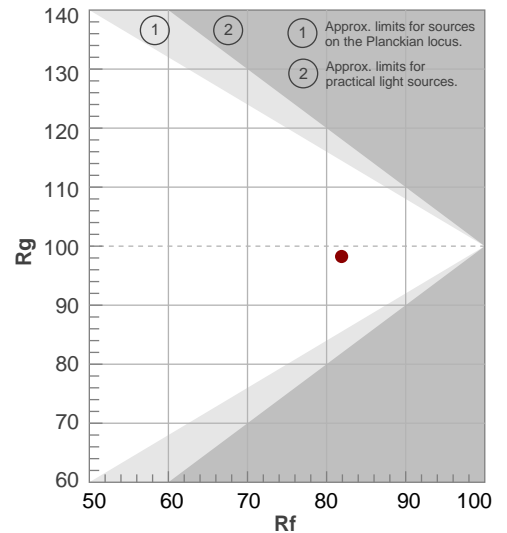
**Rf 81.9**

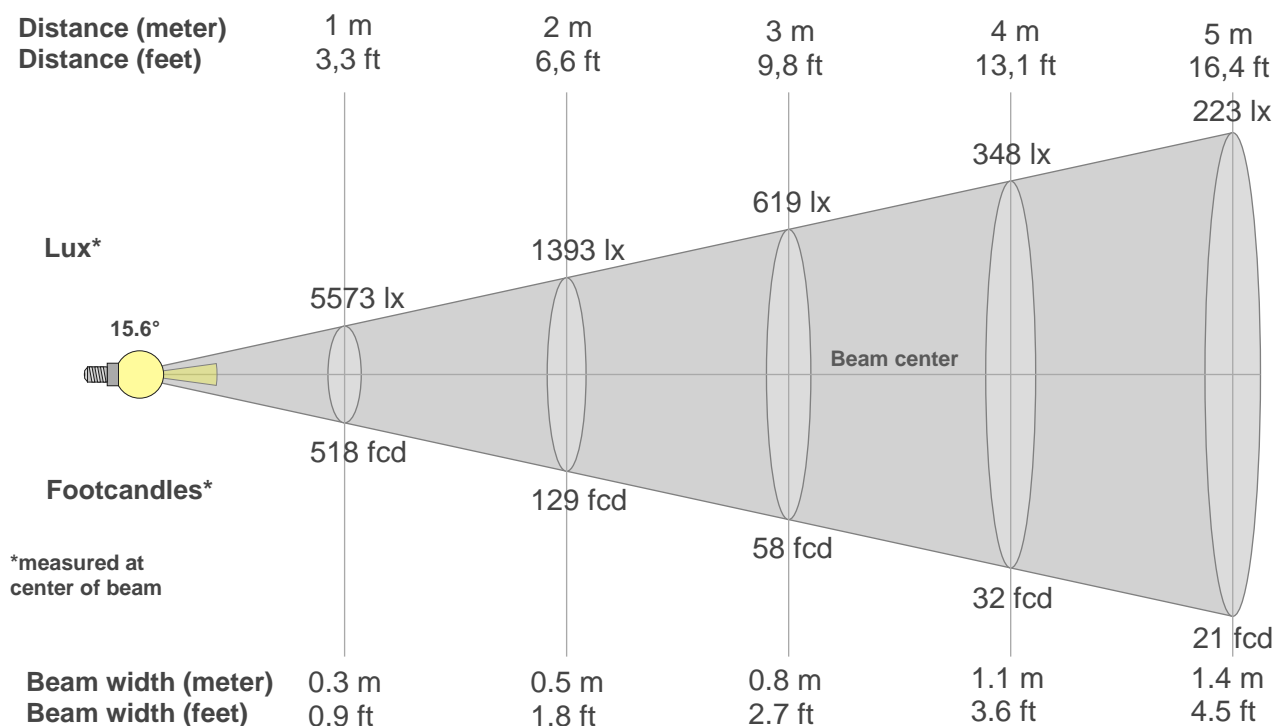
Fidelity index Rf

**Rg 98.2**

Gammut index Rg

Hue Bin	R <sub>f</sub>	Graphic shifts (%)	
		Chroma	Hue
1	81	-11%	-3%
2	82	-8%	6%
3	73	-4%	14%
4	79	4%	13%
5	84	9%	8%
6	87	8%	-2%
7	88	2%	-8%
8	86	-4%	-7%
9	87	-8%	-3%
10	78	-11%	7%
11	77	-2%	15%
12	77	4%	12%
13	86	9%	-1%
14	87	9%	-4%
15	80	2%	-15%
16	80	-4%	-13%





#### Beam intensities from 1-20m

1m	2m	3m	4m	5m	6m	7m	8m	9m	10m	11m	12m	13m	14m	15m	16m	17m	18m	19m	20m
3.3ft	6.6ft	9.8ft	13.1ft	16.4ft	19.7ft	23ft	26.2ft	29.5ft	32.8ft	36.1ft	39.4ft	42.7ft	45.9ft	49.2ft	52.5ft	55.8ft	59.1ft	62.3ft	65.6ft
5573lx	1393lx	619lx	348lx	223lx	155lx	114lx	87lx	69lx	56lx	46lx	39lx	33lx	28lx	25lx	22lx	19lx	17lx	15lx	14lx
517.7fcd	129.4fcd	57.5fcd	32.4fcd	20.7fcd	14.4fcd	10.6fcd	8.1fcd	6.4fcd	5.2fcd	4.3fcd	3.6fcd	3.1fcd	2.6fcd	2.3fcd	2fcd	1.8fcd	1.6fcd	1.4fcd	1.3fcd

#### Intensities in 0° c-plane

0°	1°	2°	3°	4°	5°	6°	7°	8°	9°	10°	11°	12°	13°	14°	15°	16°	17°	18°	19°
5573	5519	5378	5184	4893	4480	3918	3289	2679	2153	1721	1367	1087	872	704	557	417	291	193	135
100%	99%	96%	93%	88%	80%	70%	59%	48%	39%	31%	25%	19%	16%	13%	10%	7%	5%	3%	2%

#### Intensities in 90° c-plane

0°	1°	2°	3°	4°	5°	6°	7°	8°	9°	10°	11°	12°	13°	14°	15°	16°	17°	18°	19°
5573	5514	5380	5169	4871	4441	3881	3247	2631	2117	1700	1357	1075	863	700	554	412	289	196	139
100%	99%	97%	93%	87%	80%	70%	58%	47%	38%	31%	24%	19%	15%	13%	10%	7%	5%	4%	2%

#### Intensities in 180° c-plane

0°	1°	2°	3°	4°	5°	6°	7°	8°	9°	10°	11°	12°	13°	14°	15°	16°	17°	18°	19°
5573	5519	5378	5184	4893	4480	3918	3289	2679	2153	1721	1367	1087	872	704	557	417	291	193	135
100%	99%	96%	93%	88%	80%	70%	59%	48%	39%	31%	25%	19%	16%	13%	10%	7%	5%	3%	2%

#### Intensities in 270° c-plane

0°	1°	2°	3°	4°	5°	6°	7°	8°	9°	10°	11°	12°	13°	14°	15°	16°	17°	18°	19°
5573	5514	5380	5169	4871	4441	3881	3247	2631	2117	1700	1357	1075	863	700	554	412	289	196	139
100%	99%	97%	93%	87%	80%	70%	58%	47%	38%	31%	24%	19%	15%	13%	10%	7%	5%	4%	2%

Beam angle 50%	Field angle 10%	Cutoff angle 2,5%	Intensity ratio in 120° cone	Intensity ratio in 90° cone
{B_ANG}°	29.9°	37.8°	99.2%	98.9%