

Light efficiency:

57 Lumen/Watt

Light quality:

CRI: 80.2

Color temperature:

3924 K

Output: 707 lm

Peak: 5243 cd

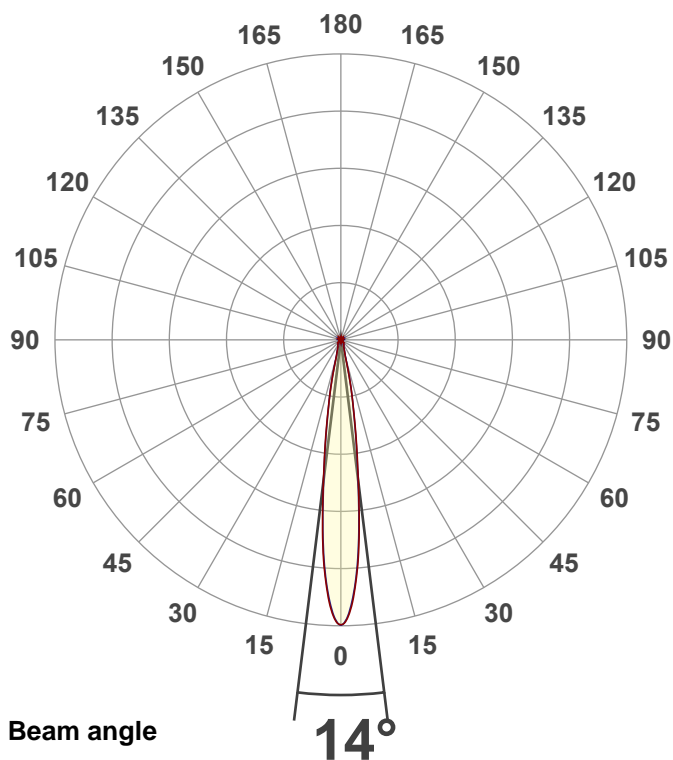
Power: 12.5 W

PF: 0.91



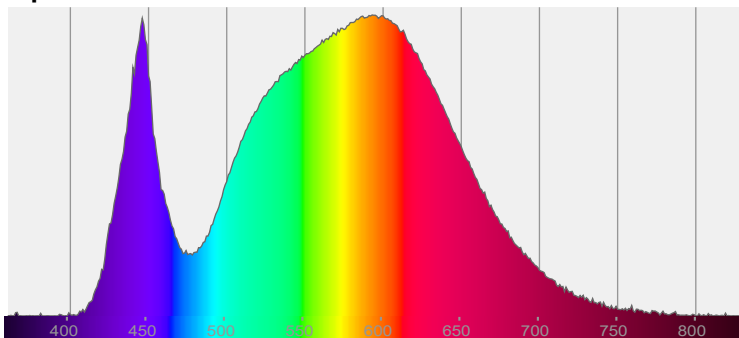
EXT-SKY-D-SW-10LM-40K-80-20D-24-BK-BK-WAND

Date and time:
11/2/2021 10:46:37 AM

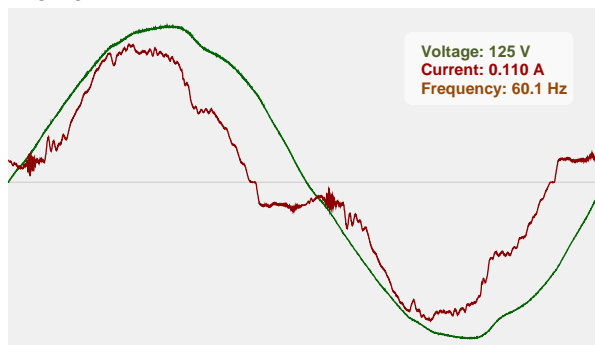


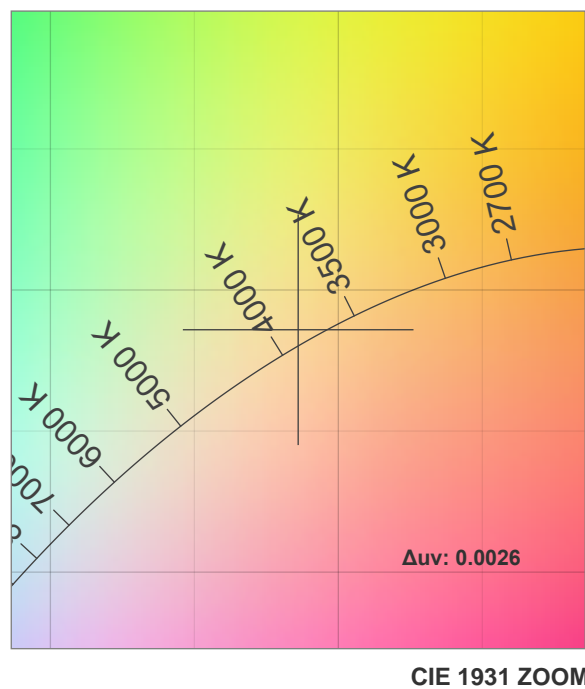
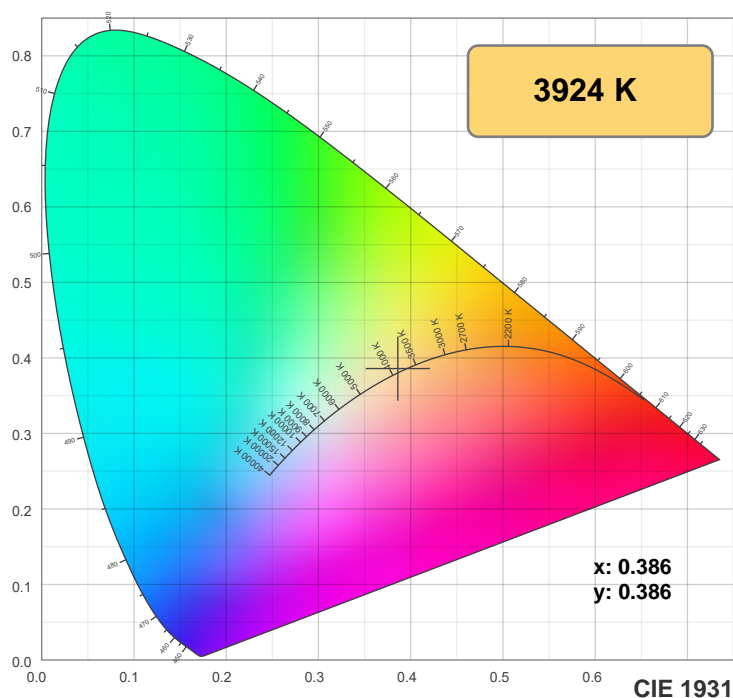
CIE 1931
x: 0.386
y: 0.386

Spectra

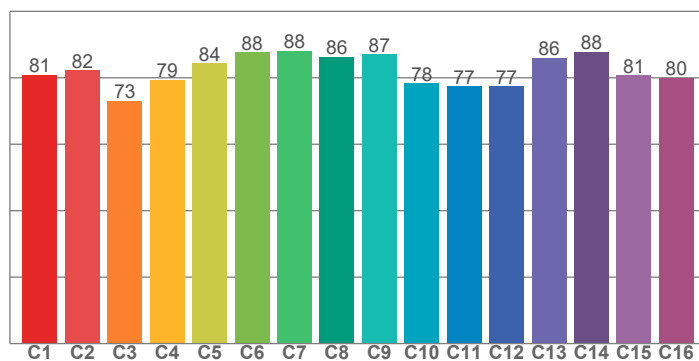


Power

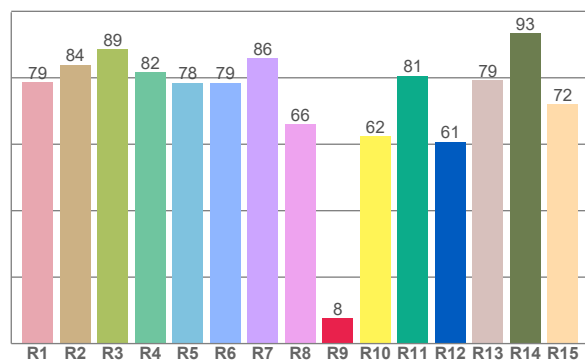




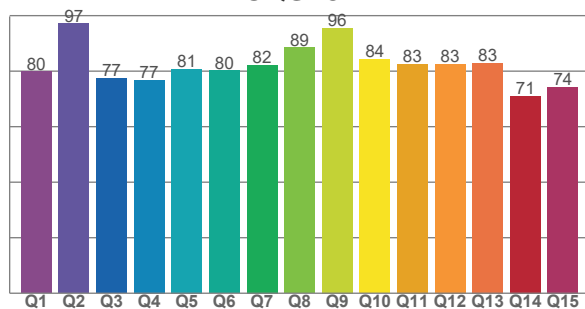
TM30: 81.9



CRI: 80.2 (R1-R8)



CQS: 81.1



CRI R values, only R1-R8 are used to calculate final CRI value

R1	R2	R3	R4	R5	R6	R7	R8	R9	R10	R11	R12	R13	R14	R15
78.7	84.0	88.6	81.7	78.5	78.6	85.8	66.0	7.6	62.4	80.6	60.7	79.3	93.3	72.0

TM30 C values, 16 binned values out of total of 99 C values

C1	C2	C3	C4	C5	C6	C7	C8	C9	C10	C11	C12	C13	C14	C15	C16
80.9	82.2	73.0	79.4	84.4	87.7	88.1	86.3	87.1	78.4	77.4	77.4	86.0	87.7	80.8	79.9

CQS Q values

Q1	Q2	Q3	Q4	Q5	Q6	Q7	Q8	Q9	Q10	Q11	Q12	Q13	Q14	Q15
79.8	97.1	77.4	76.7	80.8	80.3	82.3	88.5	95.6	84.3	82.5	82.5	83.0	71.1	74.3

Color parameters

Color temperature	Color rendering index	Red component	Color fidelity	Color gamut	Color quality scale	Color coordinate cie 1931	Color coordinate cie 1931	Color coordinate	Color coordinate	Color deviation from black body
CCT	CRI	CRI R9	TM30 Rf	TM30 Rg	CQS	x	y	u	v	Δuv
3924 K	80.2	7.6	81.9	98.2	81.1	0.386	0.386	0.225	0.338	0.0026

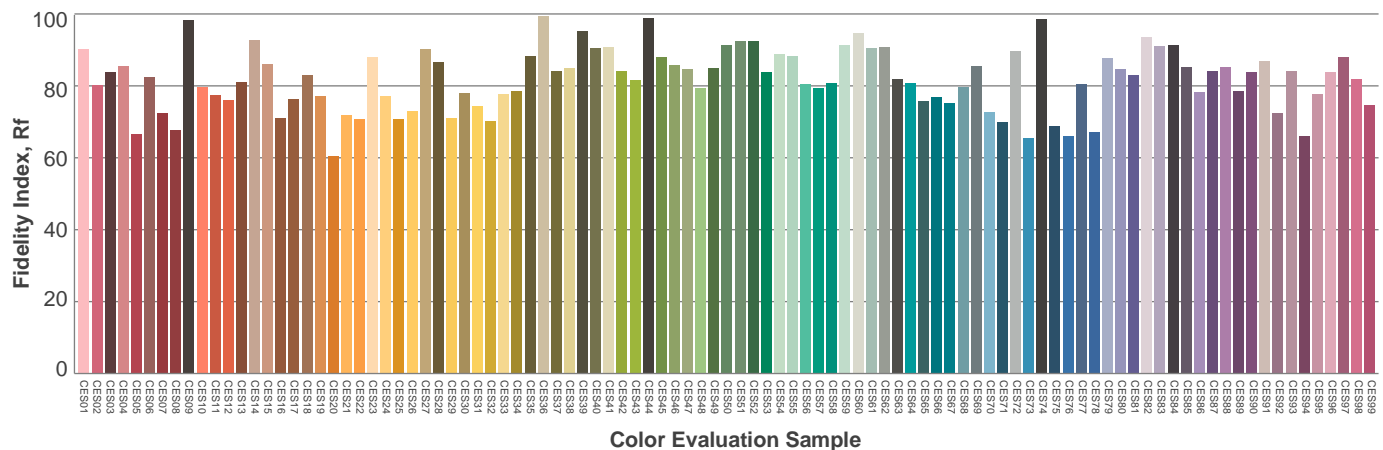
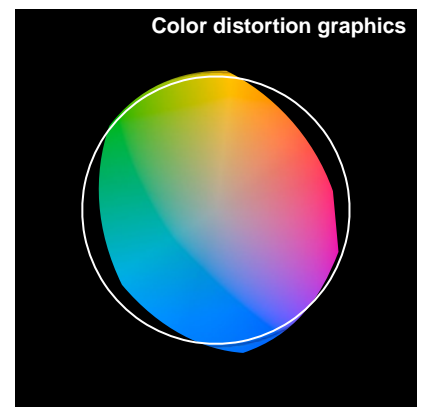
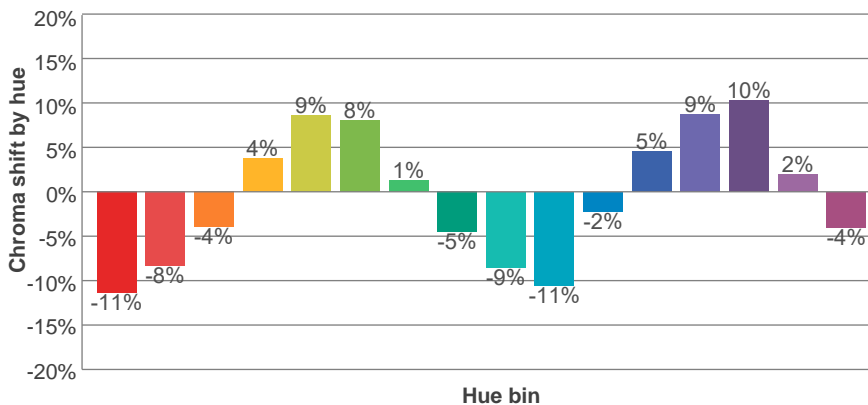
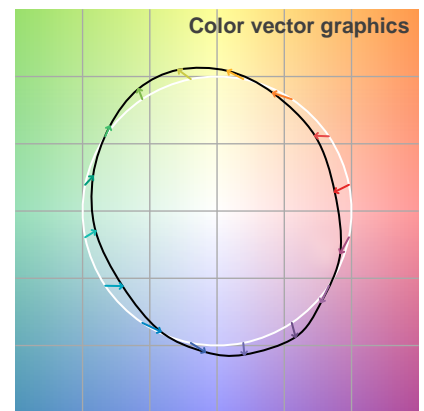
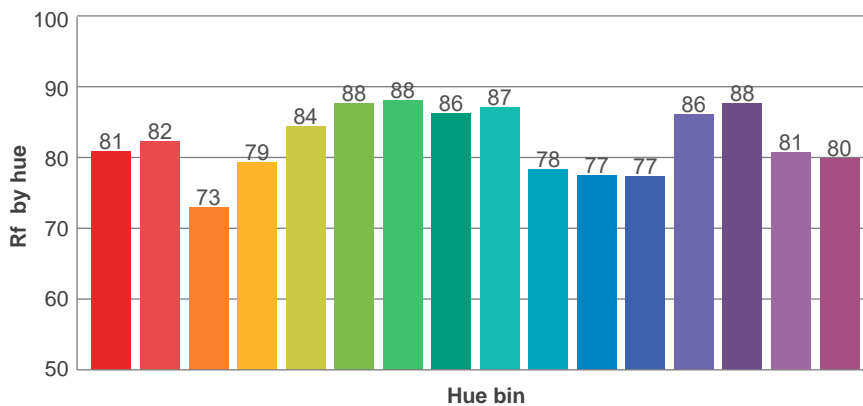
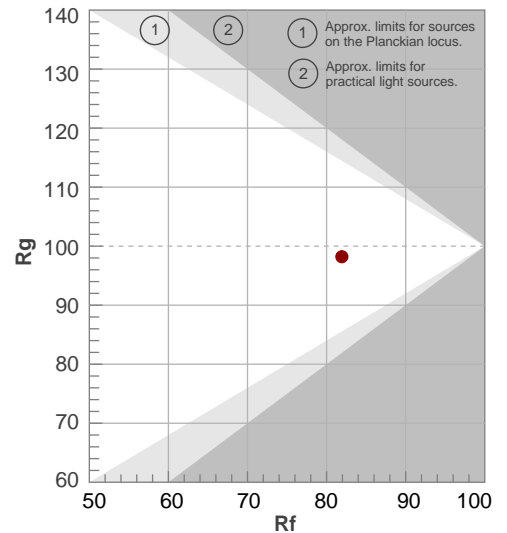
Rf 81.9

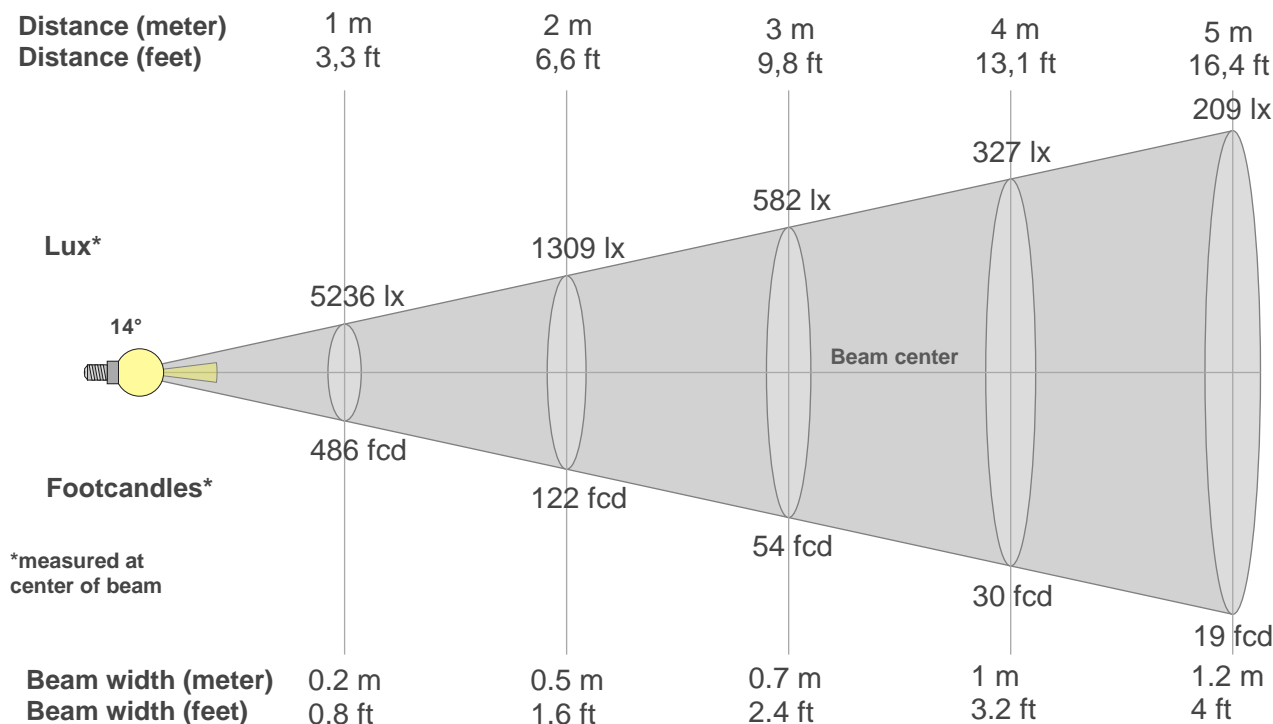
Fidelity index Rf

Rg 98.2

Gamut index Rg

Hue Bin	R _f	Graphic shifts (%)	
		Chroma	Hue
1	81	-11%	-3%
2	82	-8%	6%
3	73	-4%	14%
4	79	4%	13%
5	84	9%	8%
6	88	8%	-2%
7	88	1%	-8%
8	86	-5%	-7%
9	87	-9%	-3%
10	78	-11%	7%
11	77	-2%	15%
12	77	5%	12%
13	86	9%	-1%
14	88	10%	-4%
15	81	2%	-13%
16	80	-4%	-13%





Beam intensities from 1-20m

1m	2m	3m	4m	5m	6m	7m	8m	9m	10m	11m	12m	13m	14m	15m	16m	17m	18m	19m	20m
3.3ft	6.6ft	9.8ft	13.1ft	16.4ft	19.7ft	23ft	26.2ft	29.5ft	32.8ft	36.1ft	39.4ft	42.7ft	45.9ft	49.2ft	52.5ft	55.8ft	59.1ft	62.3ft	65.6ft
5236lx	1309lx	582lx	327lx	209lx	145lx	107lx	82lx	65lx	52lx	43lx	36lx	31lx	27lx	23lx	20lx	18lx	16lx	15lx	13lx
486.5fc	121.6fc	54.1fc	30.4fc	19.5fc	13.5fc	9.9fc	7.6fc	6fc	4.9fc	4fc	3.4fc	2.9fc	2.5fc	2.2fc	1.9fc	1.7fc	1.5fc	1.3fc	1.2fc

Intensities in 0° c-plane

0°	1°	2°	3°	4°	5°	6°	7°	8°	9°	10°	11°	12°	13°	14°	15°	16°	17°	18°	19°
5236	5167	4974	4668	4274	3793	3222	2654	2176	1771	1414	1127	888	659	458	334	278	242	213	190
100%	99%	95%	89%	82%	72%	62%	51%	42%	34%	27%	22%	17%	13%	9%	6%	5%	5%	4%	4%

Intensities in 90° c-plane

0°	1°	2°	3°	4°	5°	6°	7°	8°	9°	10°	11°	12°	13°	14°	15°	16°	17°	18°	19°
5236	5151	4936	4620	4220	3729	3158	2598	2124	1715	1374	1110	874	648	457	337	280	246	216	190
100%	98%	94%	88%	81%	71%	60%	50%	41%	33%	26%	21%	17%	12%	9%	6%	5%	5%	4%	4%

Intensities in 180° c-plane

0°	1°	2°	3°	4°	5°	6°	7°	8°	9°	10°	11°	12°	13°	14°	15°	16°	17°	18°	19°
5236	5167	4974	4668	4274	3793	3222	2654	2176	1771	1414	1127	888	659	458	334	278	242	213	190
100%	99%	95%	89%	82%	72%	62%	51%	42%	34%	27%	22%	17%	13%	9%	6%	5%	5%	4%	4%

Intensities in 270° c-plane

0°	1°	2°	3°	4°	5°	6°	7°	8°	9°	10°	11°	12°	13°	14°	15°	16°	17°	18°	19°
5236	5151	4936	4620	4220	3729	3158	2598	2124	1715	1374	1110	874	648	457	337	280	246	216	190
100%	98%	94%	88%	81%	71%	60%	50%	41%	33%	26%	21%	17%	12%	9%	6%	5%	5%	4%	4%

Beam angle 50°	Field angle 10°	Cutoff angle 2,5%	Intensity ratio in 120° cone	Intensity ratio in 90° cone
{B_ANG}°	27.2°	48.1°	85.4%	76.7%