

Light efficiency:

51 Lumen/Watt

Light quality:

CRI: 82.4

Color temperature:

4088 K

Output: 626 lm

Peak: 1541 cd

Power: 12.3 W

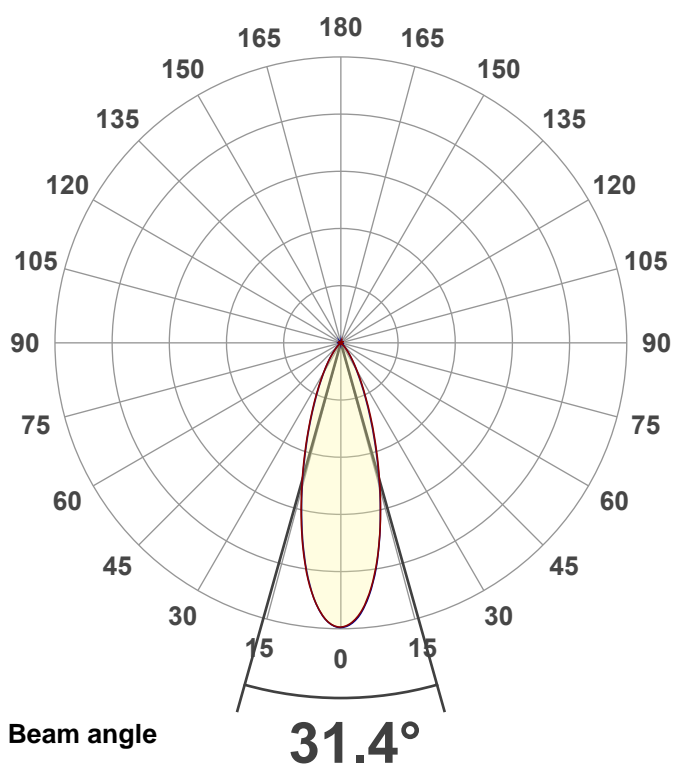
PF: 0.91



EXT-SKY-D-SW-10LM-40K-80-30D-24-BK-BK-DGLOBE

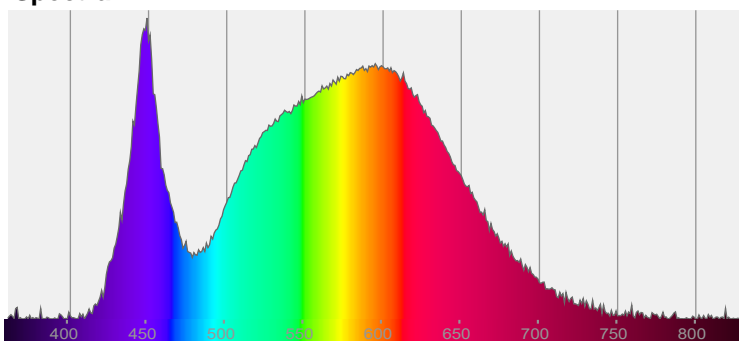
Date and time:

11/4/2021 9:03:51 AM

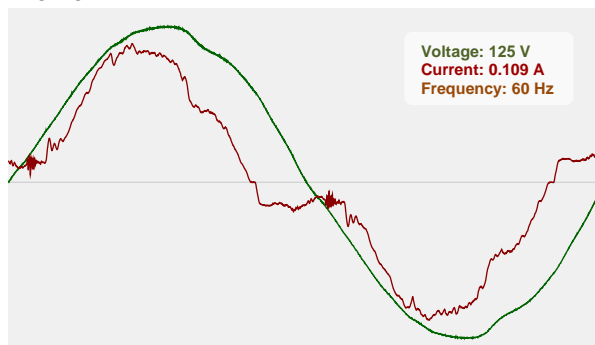


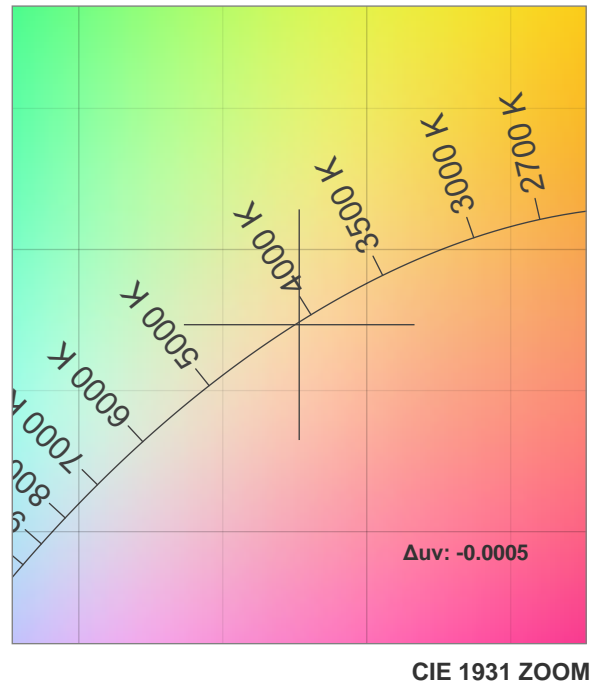
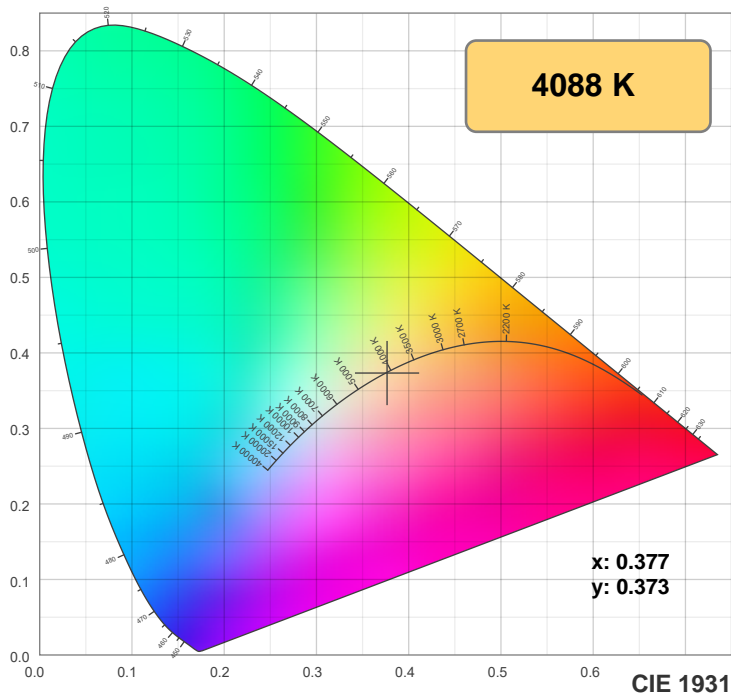
CIE 1931
x: 0.377
y: 0.373

Spectra

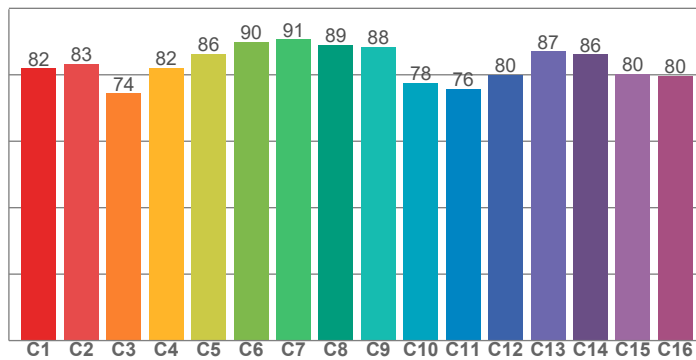


Power

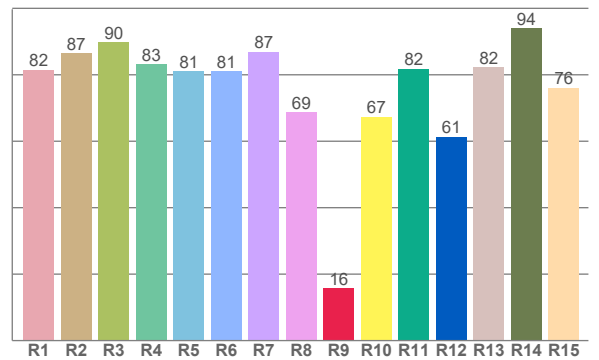




TM30: 82.9



CRI: 82.4 (R1-R8)



CRI R values, only R1-R8 are used to calculate final CRI value

R1	R2	R3	R4	R5	R6	R7	R8	R9	R10	R11	R12	R13	R14	R15
81.5	86.6	89.8	83.1	81.1	81.2	87.0	68.8	15.7	67.4	81.8	61.4	82.4	94.0	76.1

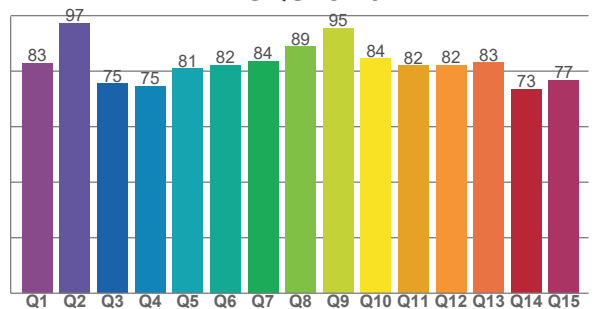
TM30 C values, 16 binned values out of total of 99 C values

C1	C2	C3	C4	C5	C6	C7	C8	C9	C10	C11	C12	C13	C14	C15	C16
81.9	83.2	74.4	82.1	86.3	89.8	90.7	89.1	88.5	77.6	75.7	79.9	87.0	86.1	80.2	79.7

CQS Q values

Q1	Q2	Q3	Q4	Q5	Q6	Q7	Q8	Q9	Q10	Q11	Q12	Q13	Q14	Q15
82.8	97.3	75.5	74.5	80.9	82.2	83.6	88.9	95.4	84.5	82.0	82.2	83.2	73.5	76.8

CQS: 81.6



Color parameters

Color temperature	Color rendering index	Red component	Color fidelity	Color gamut	Color quality scale	Color coordinate cie 1931	Color coordinate cie 1931	Color coordinate	Color coordinate	Color deviation from black body
CCT	CRI	CRI R9	TM30 Rf	TM30 Rg	CQS	x	y	u	v	Δuv
4088 K	82.4	15.7	82.9	98.1	81.6	0.377	0.373	0.224	0.333	-0.0005

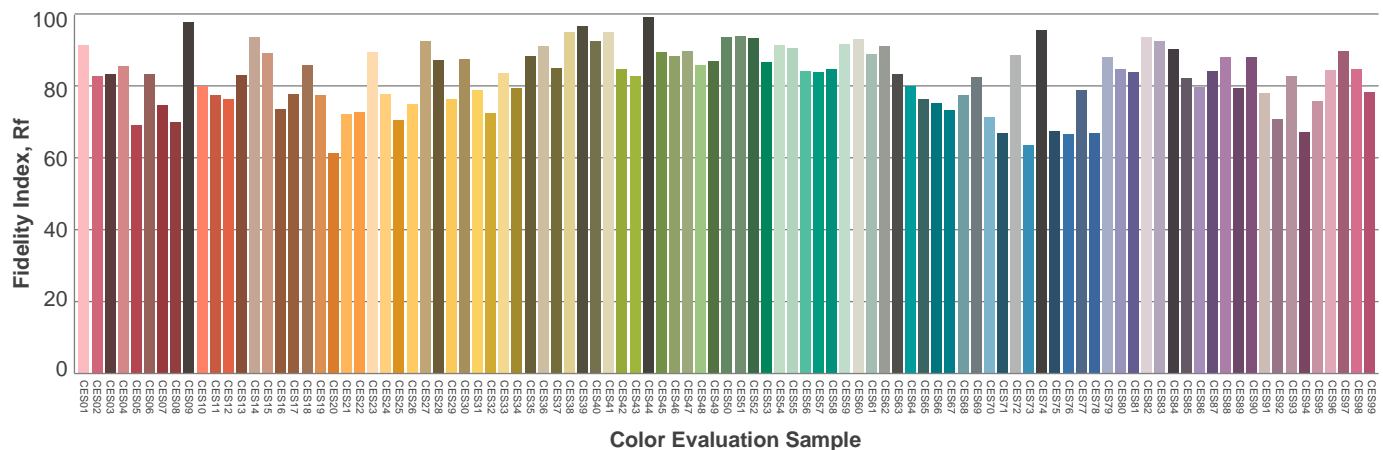
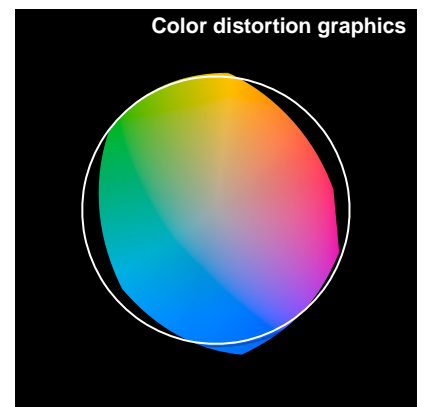
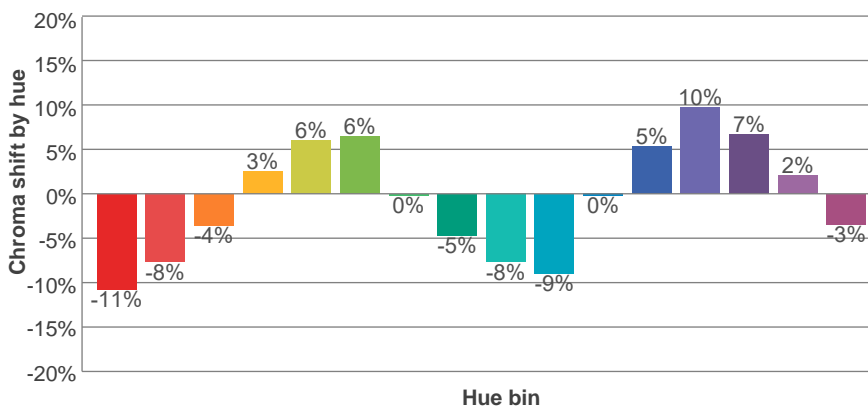
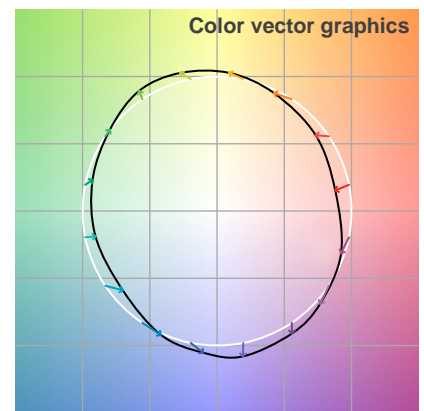
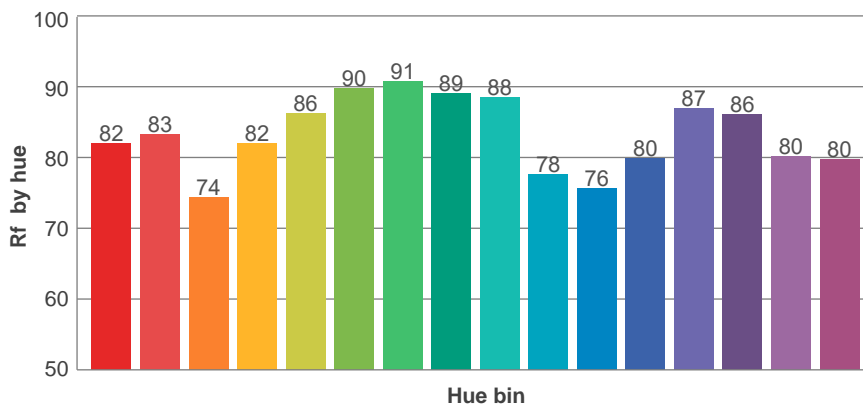
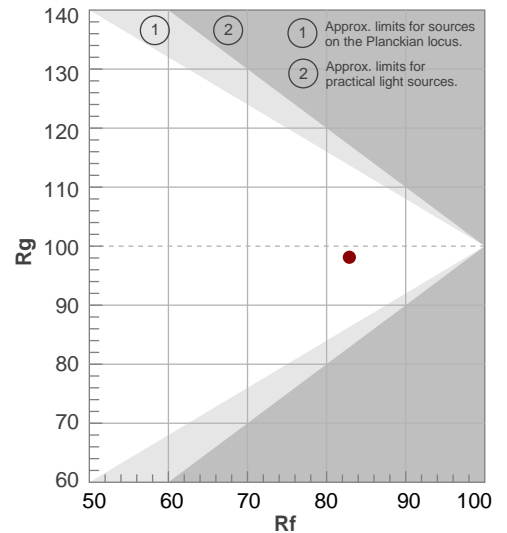
Rf 82.9

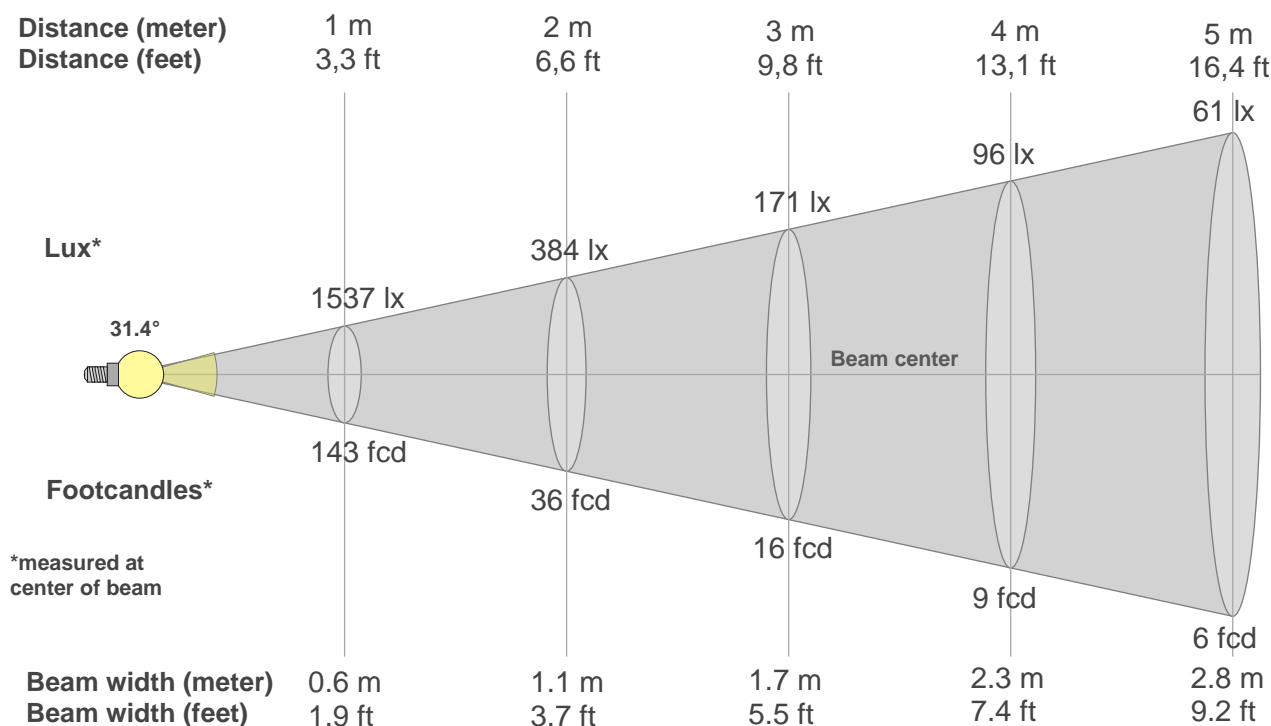
Fidelity index Rf

Rg 98.1

Gammut index Rg

Hue Bin	R _f	Graphic shifts (%)	
		Chroma	Hue
1	82	-11%	-2%
2	83	-8%	6%
3	74	-4%	13%
4	82	3%	11%
5	86	6%	7%
6	90	6%	-1%
7	91	0%	-6%
8	89	-5%	-5%
9	88	-8%	1%
10	78	-9%	10%
11	76	0%	16%
12	80	5%	10%
13	87	10%	-2%
14	86	7%	-4%
15	80	2%	-15%
16	80	-3%	-13%





Beam intensities from 1-20m

1m	2m	3m	4m	5m	6m	7m	8m	9m	10m	11m	12m	13m	14m	15m	16m	17m	18m	19m	20m
3.3ft	6.6ft	9.8ft	13.1ft	16.4ft	19.7ft	23ft	26.2ft	29.5ft	32.8ft	36.1ft	39.4ft	42.7ft	45.9ft	49.2ft	52.5ft	55.8ft	59.1ft	62.3ft	65.6ft
1537lx	384lx	171lx	96lx	61lx	43lx	31lx	24lx	19lx	15lx	13lx	11lx	9lx	8lx	7lx	6lx	5lx	5lx	4lx	4lx
142.8fcd	35.7fcd	15.9fcd	8.9fcd	5.7fcd	4fcd	2.9fcd	2.2fcd	1.8fcd	1.4fcd	1.2fcd	1fcd	0.8fcd	0.7fcd	0.6fcd	0.6fcd	0.5fcd	0.4fcd	0.4fcd	0.4fcd

Intensities in 0° c-plane

0°	2°	4°	6°	8°	10°	12°	14°	16°	18°	20°	22°	24°	26°	28°	30°	32°	34°	36°	38°
1537	1520	1467	1385	1281	1158	1024	888	757	635	524	428	345	279	224	178	141	111	86	65
100%	99%	95%	90%	83%	75%	67%	58%	49%	41%	34%	28%	22%	18%	15%	12%	9%	7%	6%	4%

Intensities in 90° c-plane

0°	2°	4°	6°	8°	10°	12°	14°	16°	18°	20°	22°	24°	26°	28°	30°	32°	34°	36°	38°
1537	1522	1477	1393	1287	1161	1023	882	745	621	510	412	329	263	209	166	130	100	77	59
100%	99%	96%	91%	84%	76%	67%	57%	48%	40%	33%	27%	21%	17%	14%	11%	8%	6%	5%	4%

Intensities in 180° c-plane

0°	2°	4°	6°	8°	10°	12°	14°	16°	18°	20°	22°	24°	26°	28°	30°	32°	34°	36°	38°
1537	1520	1470	1391	1288	1161	1026	889	757	635	527	436	358	291	234	190	153	122	95	72
100%	99%	96%	91%	84%	76%	67%	58%	49%	41%	34%	28%	23%	19%	15%	12%	10%	8%	6%	5%

Intensities in 270° c-plane

0°	2°	4°	6°	8°	10°	12°	14°	16°	18°	20°	22°	24°	26°	28°	30°	32°	34°	36°	38°
1537	1521	1473	1393	1280	1152	1016	878	746	625	518	425	345	279	227	185	149	118	93	72
100%	99%	96%	91%	83%	75%	66%	57%	49%	41%	34%	28%	22%	18%	15%	12%	10%	8%	6%	5%

Beam angle 50%	Field angle 10%	Cutoff angle 2,5%	Intensity ratio in 120° cone	Intensity ratio in 90° cone
{B_ANG}°	62.7°	83.6°	93.8%	91.6%