

Light efficiency:

37 Lumen/Watt

Light quality:

CRI: 82.1

Color temperature:

4050 K

Output: 448 lm

Peak: 1960 cd

Power: 12.2 W

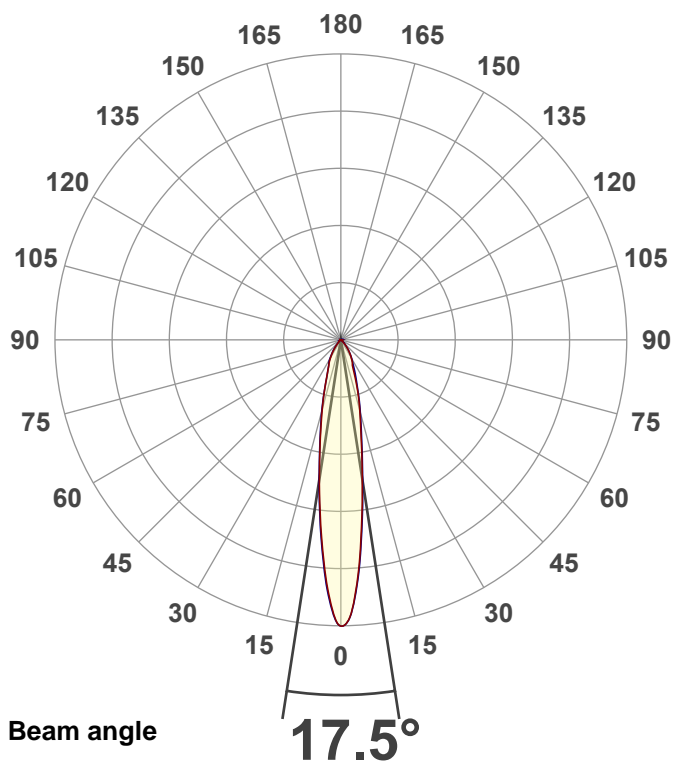
PF: 0.91



EXT-SKY-D-SW-10LM-40K-80-30D-24-BK-BK-DIAMOND

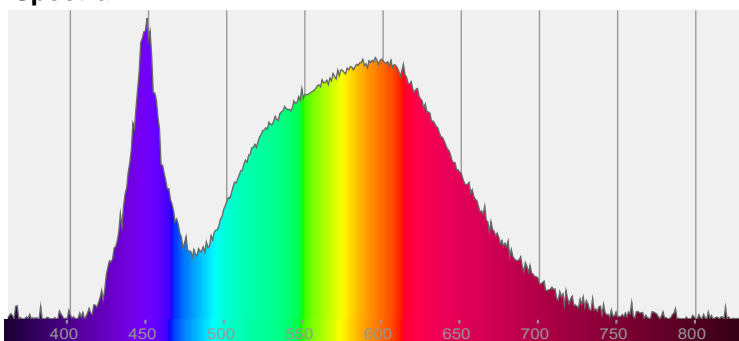
Date and time:

11/3/2021 12:15:42 PM

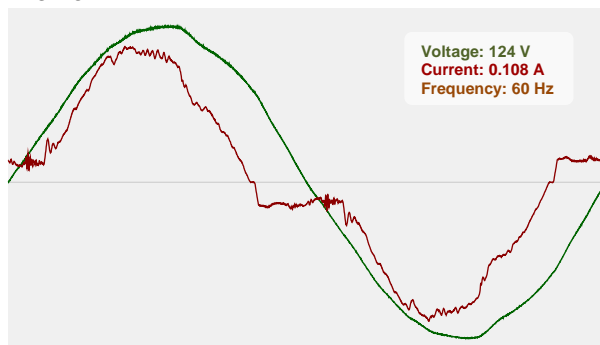


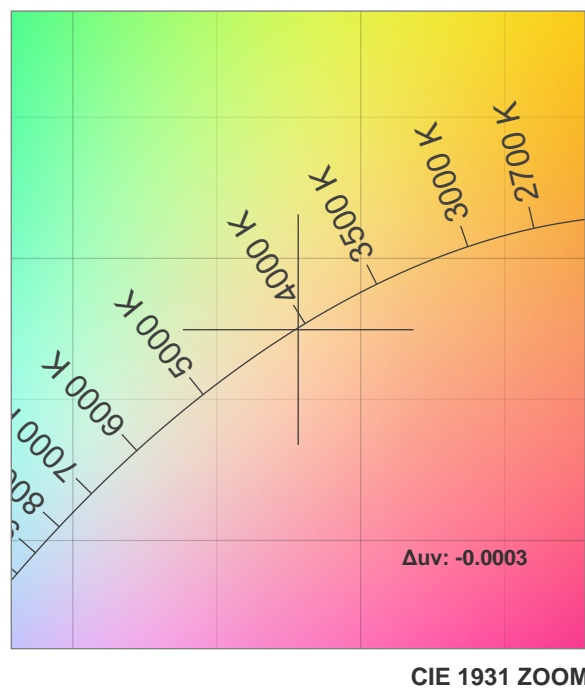
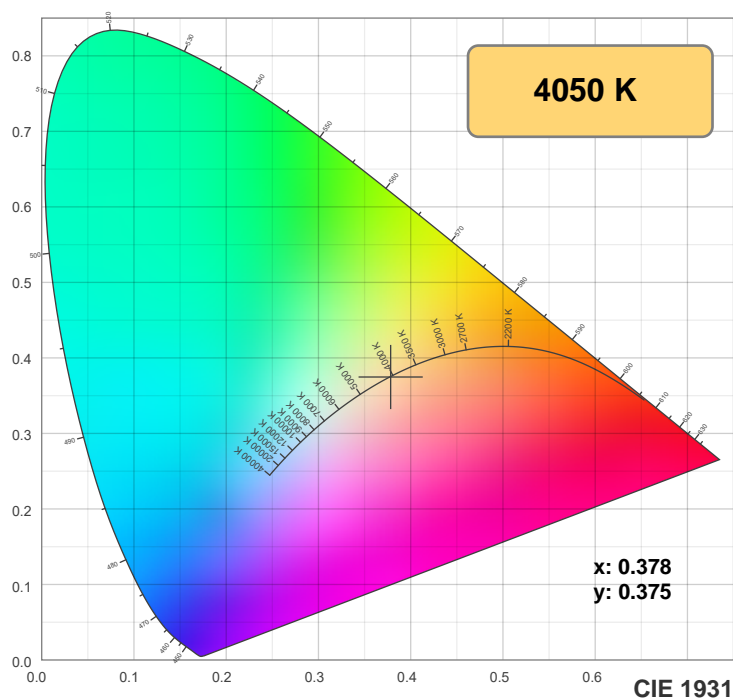
CIE 1931
x: 0.378
y: 0.375

Spectra

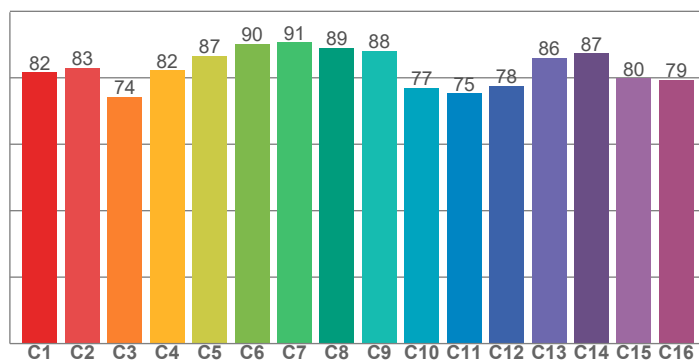


Power

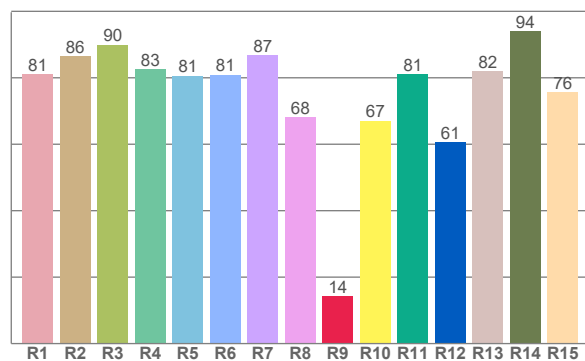




TM30: 82.8



CRI: 82.1 (R1-R8)



CRI R values, only R1-R8 are used to calculate final CRI value

R1	R2	R3	R4	R5	R6	R7	R8	R9	R10	R11	R12	R13	R14	R15
81.1	86.4	89.9	82.7	80.6	80.9	86.9	68.1	14.3	67.1	81.0	60.6	82.0	94.1	75.7

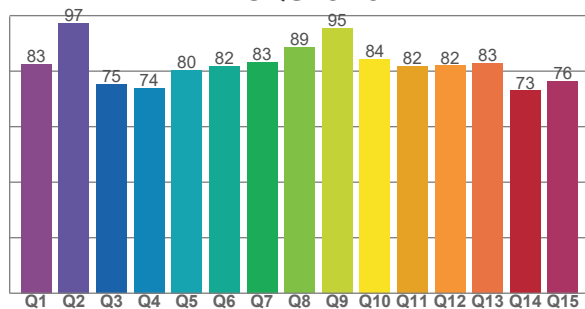
TM30 C values, 16 binned values out of total of 99 C values

C1	C2	C3	C4	C5	C6	C7	C8	C9	C10	C11	C12	C13	C14	C15	C16
81.6	83.0	74.3	82.3	86.6	90.2	90.7	88.9	88.2	77.0	75.4	77.6	86.0	87.4	79.9	79.4

CQS Q values

Q1	Q2	Q3	Q4	Q5	Q6	Q7	Q8	Q9	Q10	Q11	Q12	Q13	Q14	Q15
82.5	97.4	75.3	74.0	80.4	81.8	83.3	88.6	95.5	84.5	81.8	81.9	82.9	73.1	76.4

CQS: 81.3



Color parameters

Color temperature	Color rendering index	Red component	Color fidelity	Color gamut	Color quality scale	Color coordinate cie 1931	Color coordinate cie 1931	Color coordinate	Color coordinate	Color deviation from black body
CCT	CRI	CRI R9	TM30 Rf	TM30 Rg	CQS	x	y	u	v	Δuv
4050 K	82.1	14.3	82.8	97.9	81.3	0.378	0.375	0.224	0.334	-0.0003

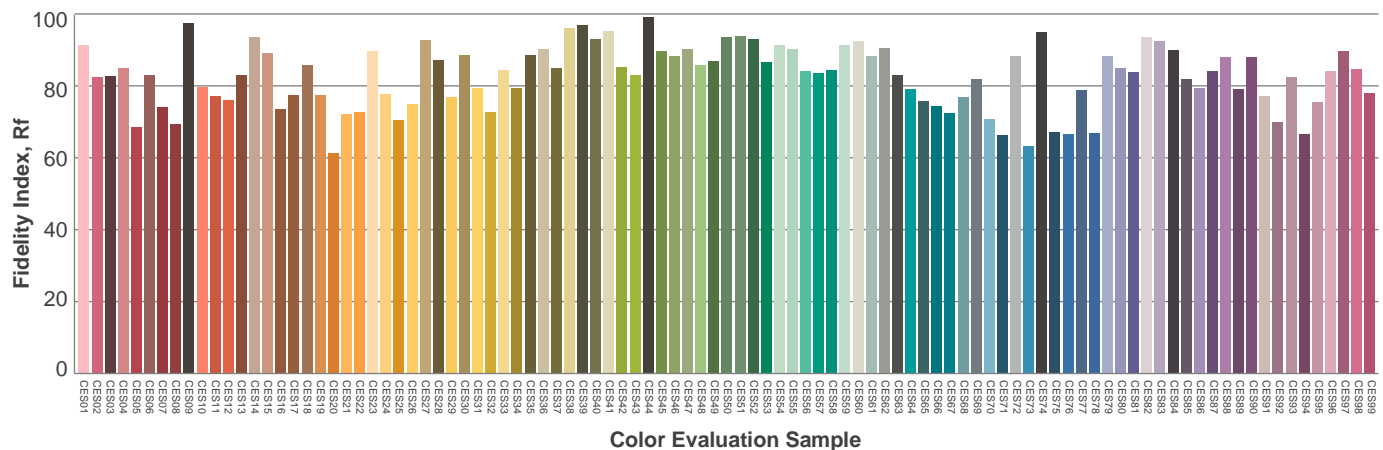
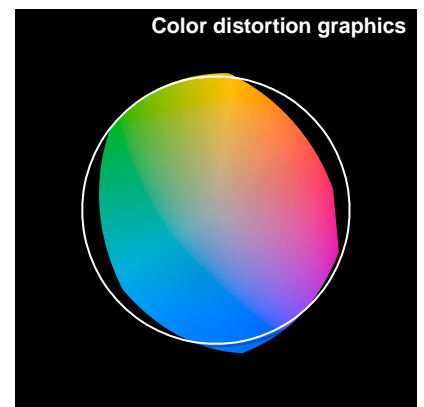
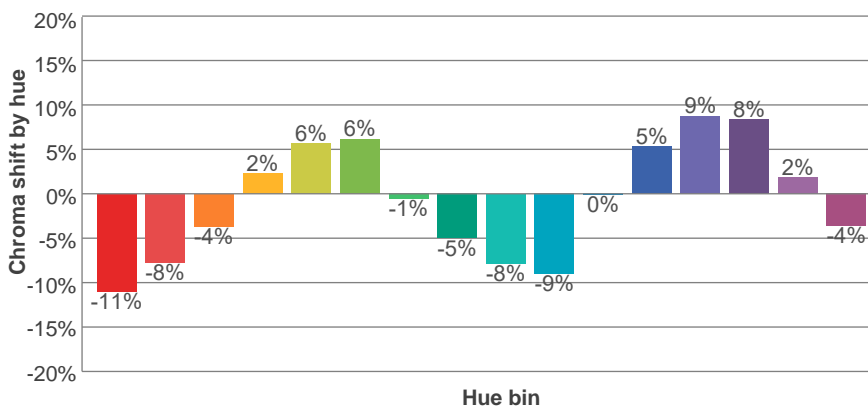
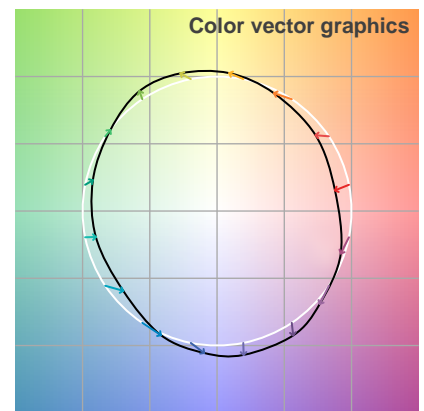
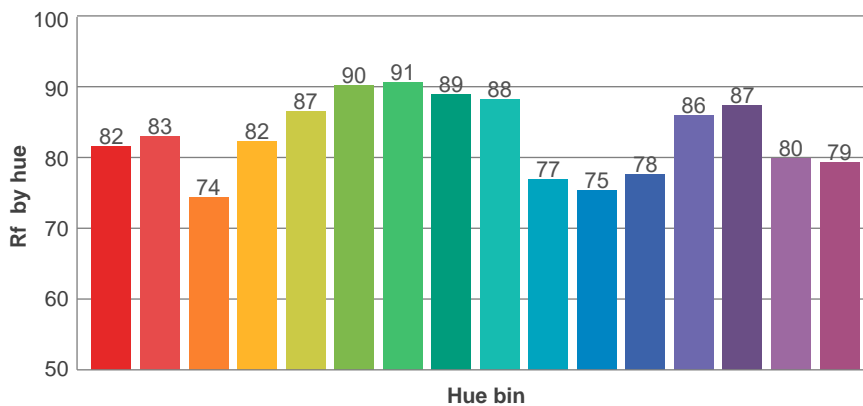
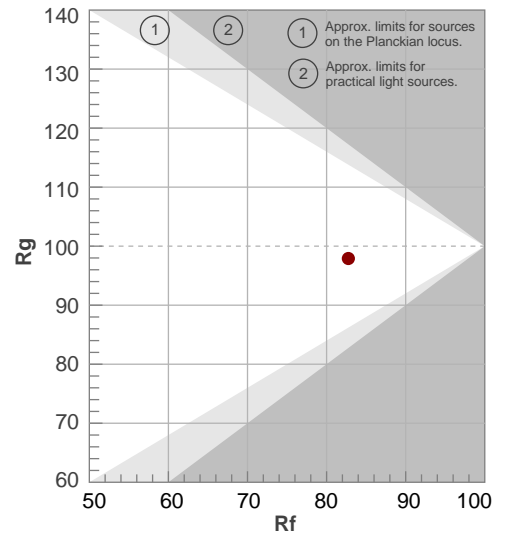
Rf 82.8

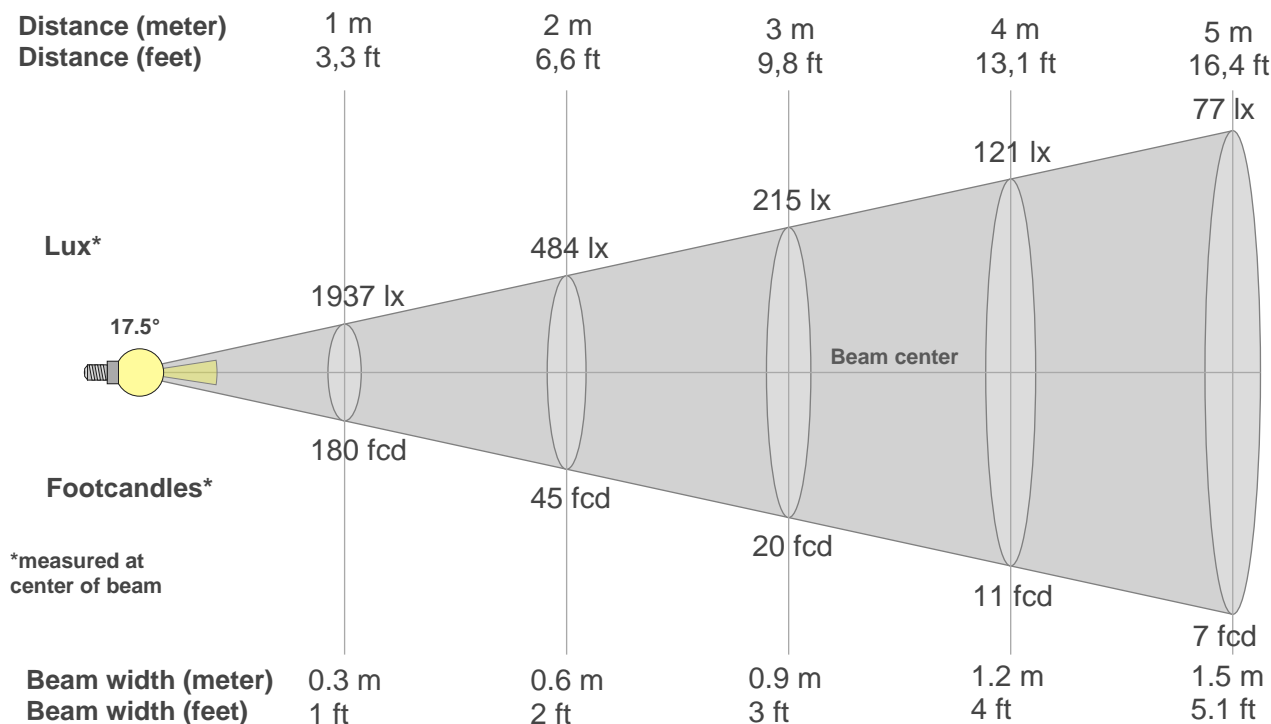
Fidelity index Rf

Rg 97.9

Gammut index Rg

Hue Bin	R _f	Graphic shifts (%)	
		Chroma	Hue
1	82	-11%	-2%
2	83	-8%	6%
3	74	-4%	13%
4	82	2%	11%
5	87	6%	7%
6	90	6%	-2%
7	91	-1%	-6%
8	89	-5%	-4%
9	88	-8%	1%
10	77	-9%	11%
11	75	0%	17%
12	78	5%	11%
13	86	9%	-1%
14	87	8%	-4%
15	80	2%	-15%
16	79	-4%	-13%





Beam intensities from 1-20m

1m	2m	3m	4m	5m	6m	7m	8m	9m	10m	11m	12m	13m	14m	15m	16m	17m	18m	19m	20m
3.3ft	6.6ft	9.8ft	13.1ft	16.4ft	19.7ft	23ft	26.2ft	29.5ft	32.8ft	36.1ft	39.4ft	42.7ft	45.9ft	49.2ft	52.5ft	55.8ft	59.1ft	62.3ft	65.6ft
1937lx	484lx	215lx	121lx	77lx	54lx	40lx	30lx	24lx	19lx	16lx	13lx	11lx	10lx	9lx	8lx	7lx	6lx	5lx	5lx
179.9fcd	45fcd	20fcd	11.2fcd	7.2fcd	5fcd	3.7fcd	2.8fcd	2.2fcd	1.8fcd	1.5fcd	1.2fcd	1.1fcd	0.9fcd	0.8fcd	0.7fcd	0.6fcd	0.6fcd	0.5fcd	0.4fcd

Intensities in 0° c-plane

0°	2°	4°	6°	8°	10°	12°	14°	16°	18°	20°	22°	24°	26°	28°	30°	32°	34°	36°	38°
1937	1887	1636	1341	1068	842	667	551	460	378	303	241	199	181	163	143	126	106	89	72
100%	97%	84%	69%	55%	43%	34%	28%	24%	20%	16%	12%	10%	9%	8%	7%	6%	5%	5%	4%

Intensities in 90° c-plane

0°	2°	4°	6°	8°	10°	12°	14°	16°	18°	20°	22°	24°	26°	28°	30°	32°	34°	36°	38°
1937	1887	1650	1359	1086	858	686	566	473	392	324	273	232	197	170	149	129	108	90	71
100%	97%	85%	70%	56%	44%	35%	29%	24%	20%	17%	14%	12%	10%	9%	8%	7%	6%	5%	4%

Intensities in 180° c-plane

0°	2°	4°	6°	8°	10°	12°	14°	16°	18°	20°	22°	24°	26°	28°	30°	32°	34°	36°	38°
1937	1809	1577	1307	1054	846	680	550	448	363	298	248	213	187	166	142	120	98	77	59
100%	93%	81%	67%	54%	44%	35%	28%	23%	19%	15%	13%	11%	10%	9%	7%	6%	5%	4%	3%

Intensities in 270° c-plane

0°	2°	4°	6°	8°	10°	12°	14°	16°	18°	20°	22°	24°	26°	28°	30°	32°	34°	36°	38°
1937	1821	1597	1326	1070	857	691	562	457	363	293	247	213	188	175	151	126	105	86	65
100%	94%	82%	68%	55%	44%	36%	29%	24%	19%	15%	13%	11%	10%	9%	8%	7%	5%	4%	3%

Beam angle 50%	Field angle 10%	Cutoff angle 2,5%	Intensity ratio in 120° cone	Intensity ratio in 90° cone
{B_ANG}°	52.8°	78.8°	98.1%	96.6%