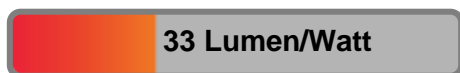


Light efficiency:



Light quality:



Color temperature:

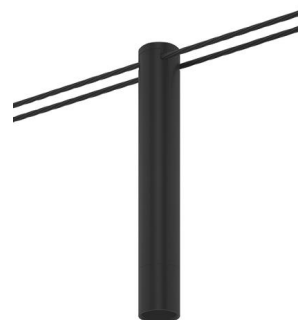


Output: 403 lm

Peak: 2299 cd

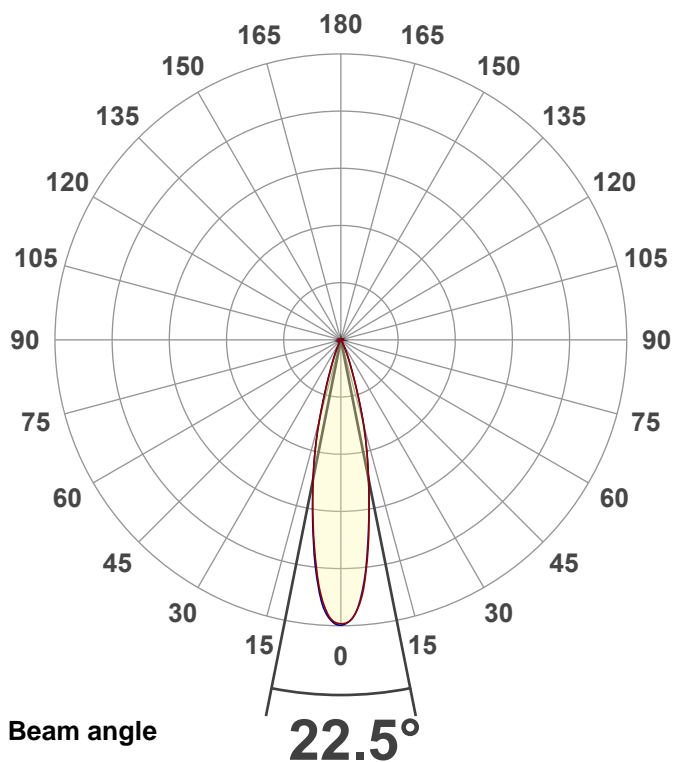
Power: 12.3 W

PF: 0.91



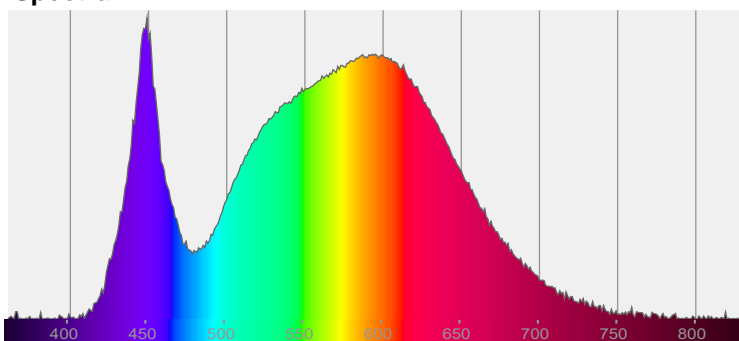
EXT-SKY-D-SW-10LM-40K-80-30D-24-BK-BK-SNOOT

Date and time:  
11/3/2021 11:50:09 AM

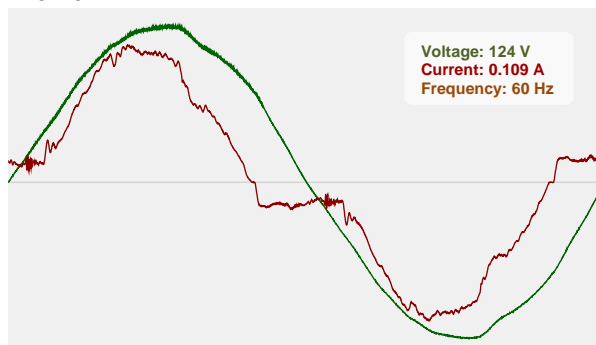


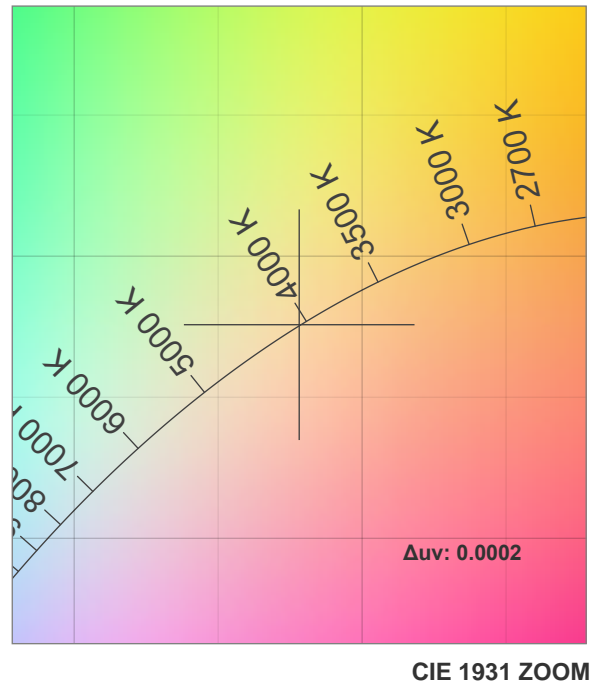
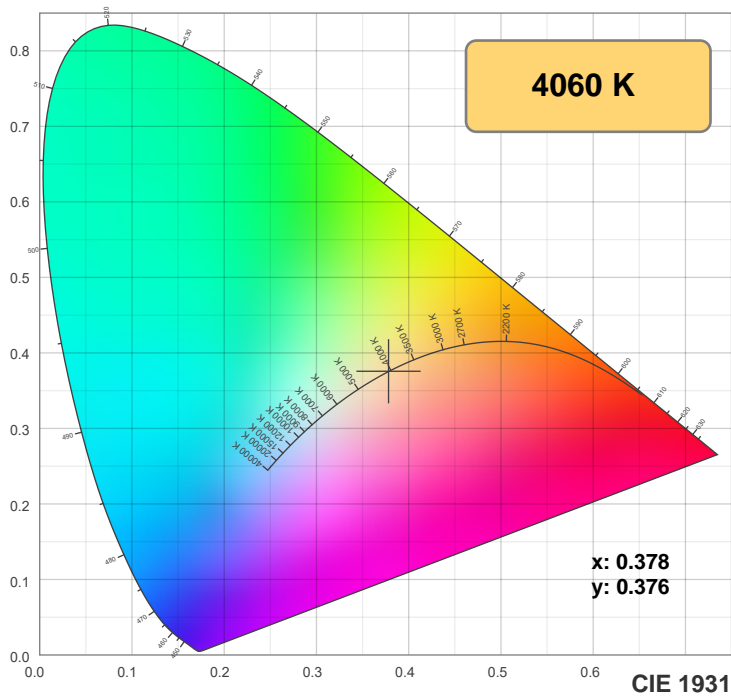
CIE 1931  
x: 0.378  
y: 0.376

Spectra

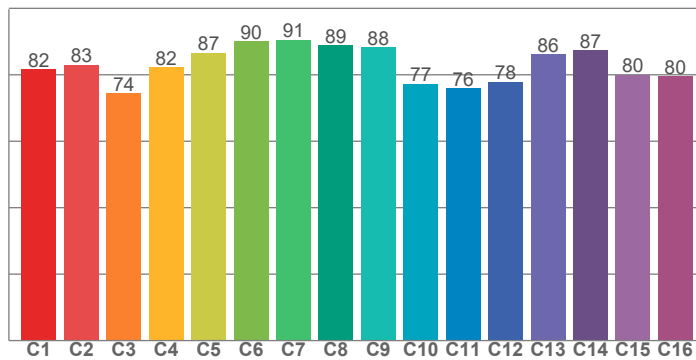


Power

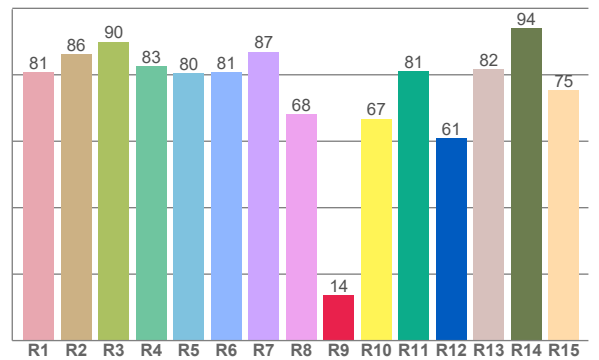




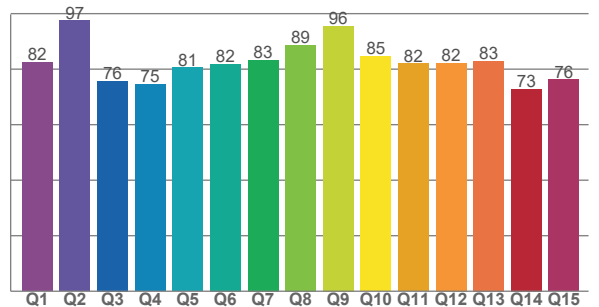
TM30: 82.9



CRI: 82.0 (R1-R8)



CQS: 81.5



CRI R values, only R1-R8 are used to calculate final CRI value

R1	R2	R3	R4	R5	R6	R7	R8	R9	R10	R11	R12	R13	R14	R15
80.8	86.2	89.9	82.6	80.4	80.8	86.9	68.0	13.7	66.7	81.1	60.8	81.7	94.1	75.3

TM30 C values, 16 binned values out of total of 99 C values

C1	C2	C3	C4	C5	C6	C7	C8	C9	C10	C11	C12	C13	C14	C15	C16
81.6	83.0	74.4	82.2	86.6	90.1	90.6	88.8	88.3	77.3	75.9	77.9	86.2	87.4	80.0	79.6

CQS Q values

Q1	Q2	Q3	Q4	Q5	Q6	Q7	Q8	Q9	Q10	Q11	Q12	Q13	Q14	Q15
82.4	97.5	75.8	74.5	80.6	81.8	83.4	88.7	95.6	84.6	82.1	82.2	83.0	72.9	76.3

## Color parameters

Color temperature	Color rendering index	Red component	Color fidelity	Color gamut	Color quality scale	Color coordinate cie 1931	Color coordinate cie 1931	Color coordinate	Color coordinate	Color deviation from black body
CCT	CRI	CRI R9	TM30 Rf	TM30 Rg	CQS	x	y	u	v	$\Delta uv$
4060 K	82.0	13.7	82.9	97.8	81.5	0.378	0.376	0.224	0.334	0.0002

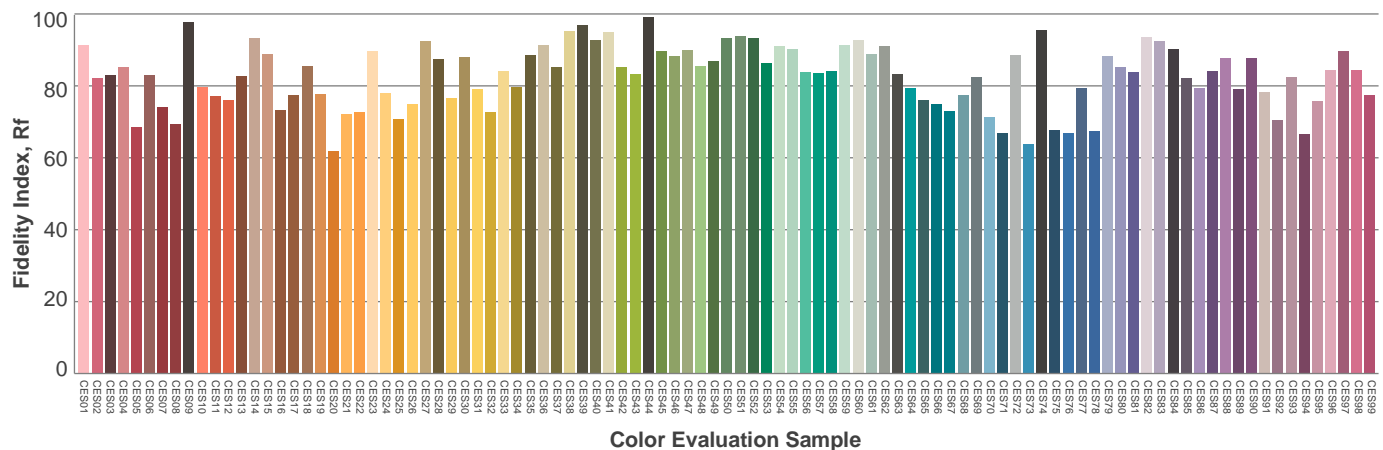
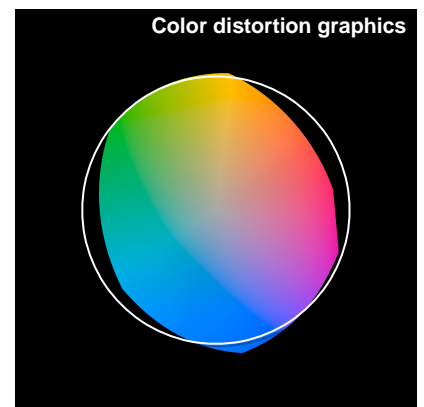
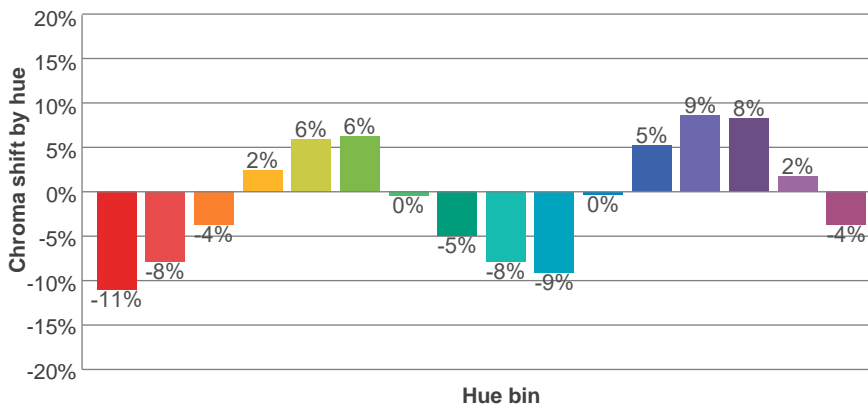
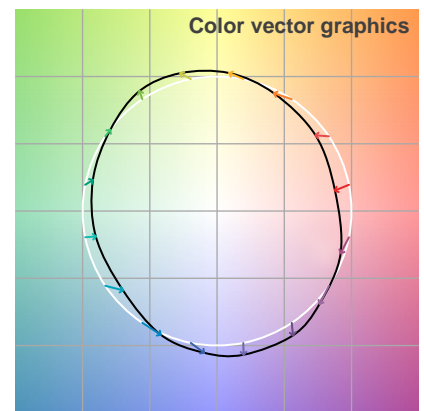
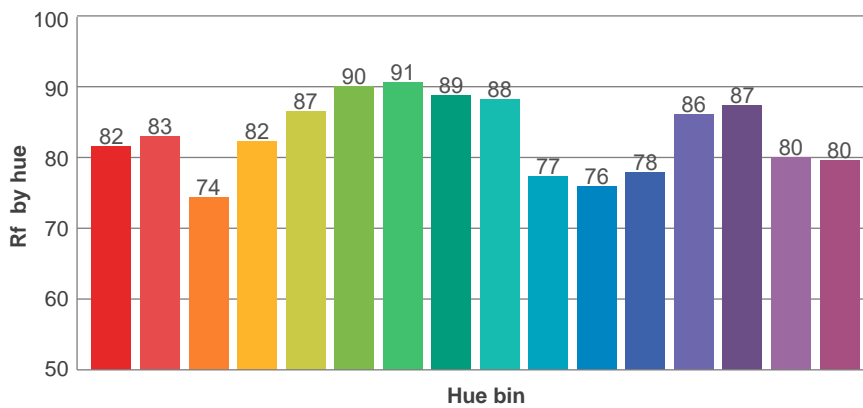
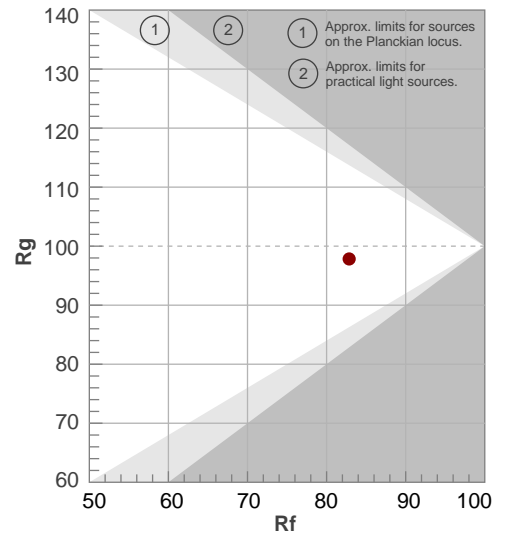
**Rf 82.9**

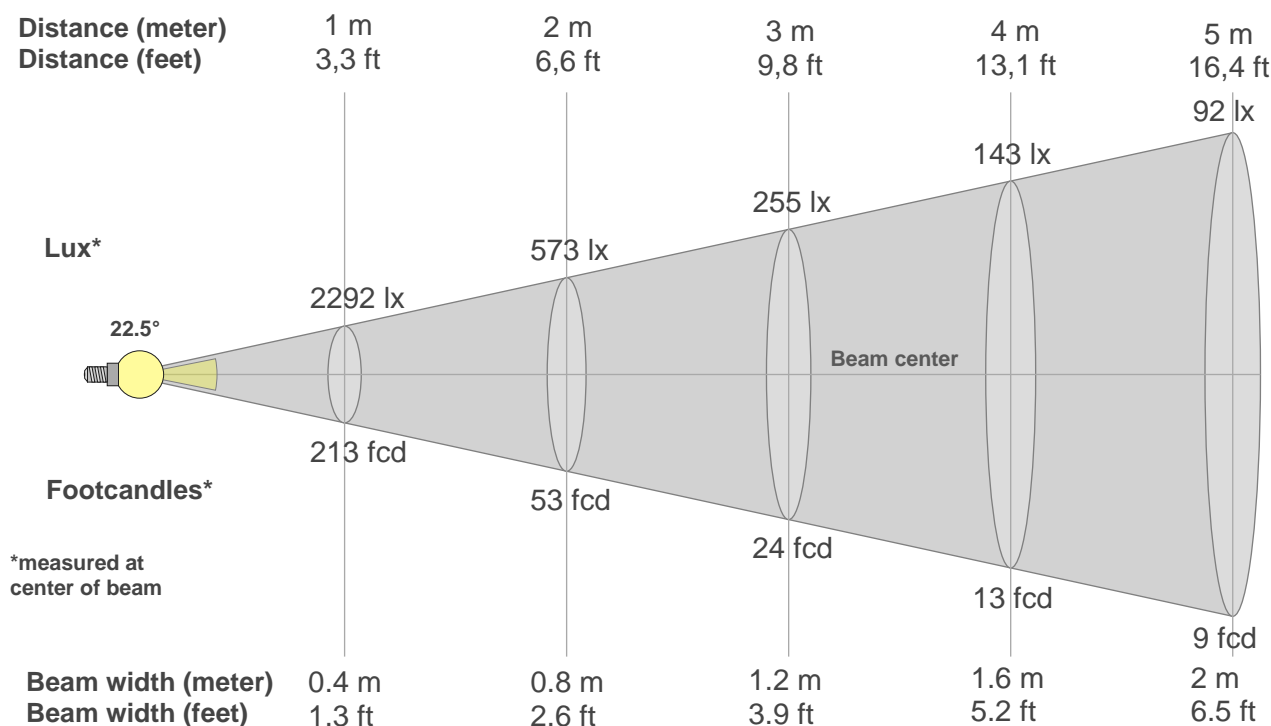
Fidelity index Rf

**Rg 97.8**

Gammut index Rg

Hue Bin	R <sub>f</sub>	Graphic shifts (%)	
		Chroma	Hue
1	82	-11%	-2%
2	83	-8%	6%
3	74	-4%	13%
4	82	2%	11%
5	87	6%	7%
6	90	6%	-2%
7	91	0%	-6%
8	89	-5%	-5%
9	88	-8%	1%
10	77	-9%	10%
11	76	0%	16%
12	78	5%	11%
13	86	9%	-1%
14	87	8%	-4%
15	80	2%	-15%
16	80	-4%	-13%





#### Beam intensities from 1-20m

1m	2m	3m	4m	5m	6m	7m	8m	9m	10m	11m	12m	13m	14m	15m	16m	17m	18m	19m	20m
3.3ft	6.6ft	9.8ft	13.1ft	16.4ft	19.7ft	23ft	26.2ft	29.5ft	32.8ft	36.1ft	39.4ft	42.7ft	45.9ft	49.2ft	52.5ft	55.8ft	59.1ft	62.3ft	65.6ft
2292lx	573lx	255lx	143lx	92lx	64lx	47lx	36lx	28lx	23lx	19lx	16lx	14lx	12lx	10lx	9lx	8lx	7lx	6lx	6lx
213fcd	53.2fcd	23.7fcd	13.3fcd	8.5fcd	5.9fcd	4.3fcd	3.3fcd	2.6fcd	2.1fcd	1.8fcd	1.5fcd	1.3fcd	1.1fcd	0.9fcd	0.8fcd	0.7fcd	0.7fcd	0.6fcd	0.5fcd

#### Intensities in 0° c-plane

0°	2°	4°	6°	8°	10°	12°	14°	16°	18°	20°	22°	24°	26°	28°	30°	32°	34°	36°	38°
2292	2255	2126	1903	1614	1313	1057	832	610	409	256	168	106	63	38	25	18	13	10	7
100%	98%	93%	83%	70%	57%	46%	36%	27%	18%	11%	7%	5%	3%	2%	1%	1%	1%	0%	0%

#### Intensities in 90° c-plane

0°	2°	4°	6°	8°	10°	12°	14°	16°	18°	20°	22°	24°	26°	28°	30°	32°	34°	36°	38°
2292	2249	2118	1889	1590	1312	1058	821	593	379	253	167	105	62	35	24	18	14	10	7
100%	98%	92%	82%	69%	57%	46%	36%	26%	17%	11%	7%	5%	3%	2%	1%	1%	1%	0%	0%

#### Intensities in 180° c-plane

0°	2°	4°	6°	8°	10°	12°	14°	16°	18°	20°	22°	24°	26°	28°	30°	32°	34°	36°	38°
2292	2248	2099	1865	1587	1312	1057	802	551	349	217	132	79	46	28	19	14	10	7	5
100%	98%	92%	81%	69%	57%	46%	35%	24%	15%	9%	6%	3%	2%	1%	1%	1%	0%	0%	0%

#### Intensities in 270° c-plane

0°	2°	4°	6°	8°	10°	12°	14°	16°	18°	20°	22°	24°	26°	28°	30°	32°	34°	36°	38°
2292	2259	2144	1895	1608	1322	1054	803	546	346	216	133	78	46	32	23	17	12	8	5
100%	99%	94%	83%	70%	58%	46%	35%	24%	15%	9%	6%	3%	2%	1%	1%	1%	1%	0%	0%

Beam angle 50%	Field angle 10%	Cutoff angle 2,5%	Intensity ratio in 120° cone	Intensity ratio in 90° cone
{B_ANG}°	40.2°	51.4°	99.3%	98.9%