

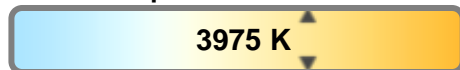
Light efficiency:



Light quality:



Color temperature:



Output: 389 lm

Peak: 1697 cd

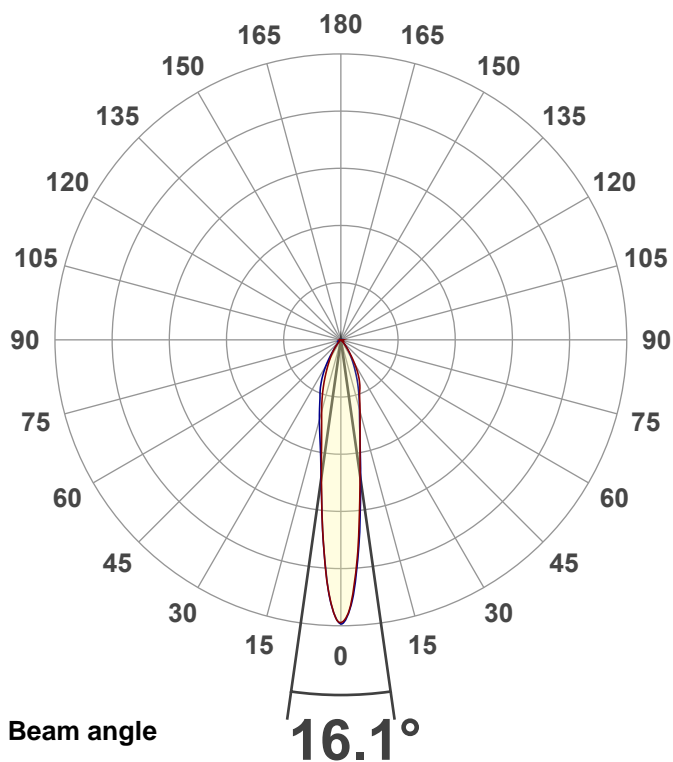
Power: 12.4 W

PF: 0.91



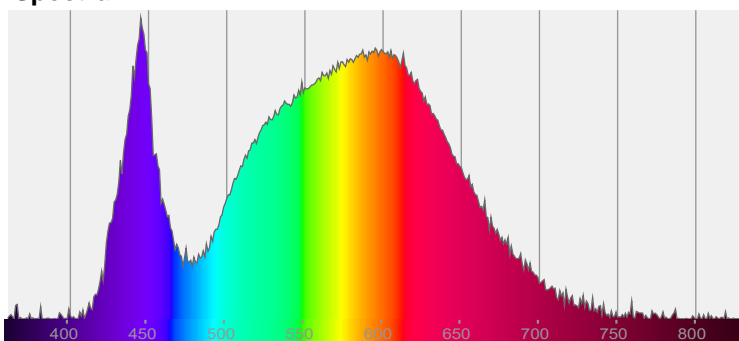
EXT-SKY-D-SW-10LM-40K-80-40D-24-BK-BK-DIAMOND

Date and time:
11/3/2021 1:51:35 PM

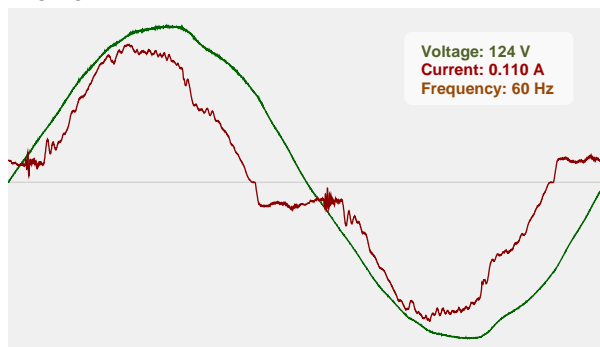


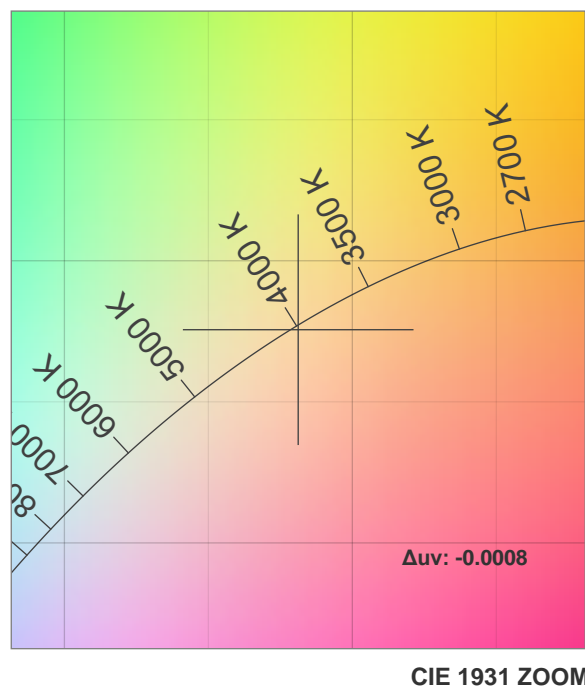
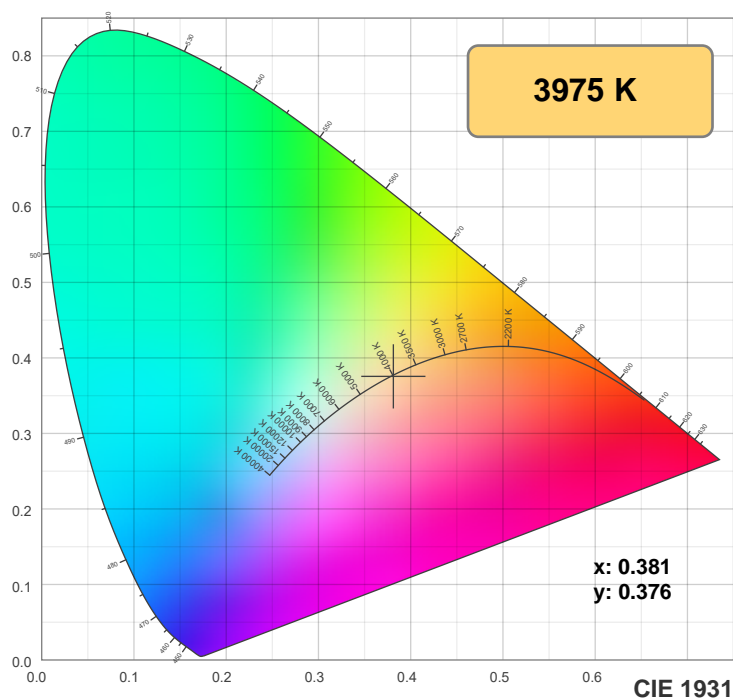
CIE 1931
x: 0.381
y: 0.376

Spectra

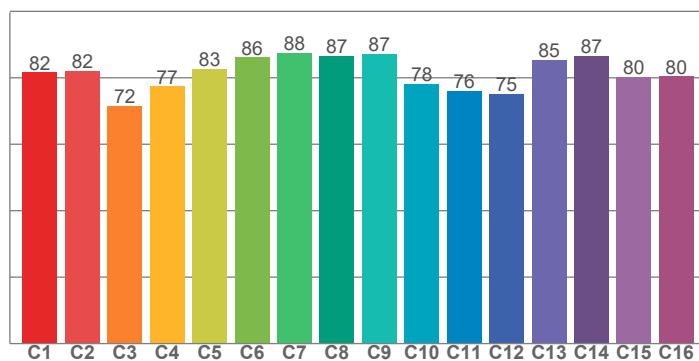


Power

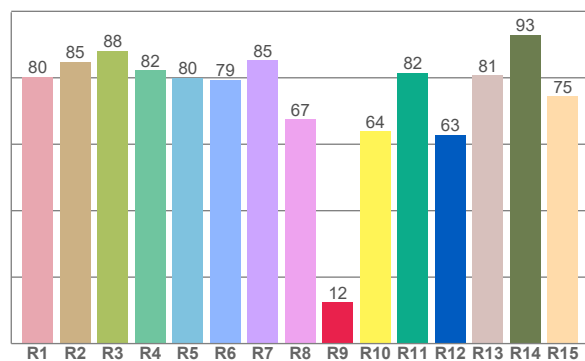




TM30: 81.3



CRI: 81.0 (R1-R8)



CRI R values, only R1-R8 are used to calculate final CRI value

R1	R2	R3	R4	R5	R6	R7	R8	R9	R10	R11	R12	R13	R14	R15
80.4	84.8	88.1	82.2	80.1	79.4	85.3	67.5	12.4	63.9	81.5	62.9	80.7	93.0	74.5

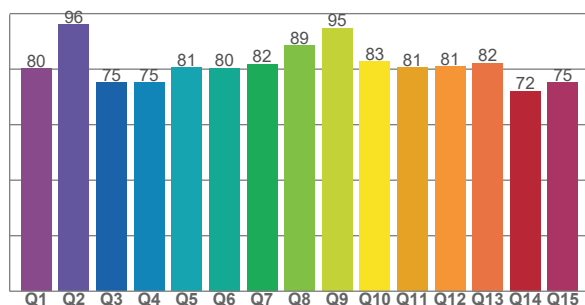
TM30 C values, 16 binned values out of total of 99 C values

C1	C2	C3	C4	C5	C6	C7	C8	C9	C10	C11	C12	C13	C14	C15	C16
81.6	82.1	71.6	77.5	82.6	86.2	87.5	86.5	87.2	78.1	76.1	75.2	85.4	86.6	80.3	80.4

CQS Q values

Q1	Q2	Q3	Q4	Q5	Q6	Q7	Q8	Q9	Q10	Q11	Q12	Q13	Q14	Q15
80.2	96.1	75.2	75.2	80.6	80.4	81.9	88.5	94.8	82.7	80.6	81.0	82.2	72.2	75.2

CQS: 80.6



Color parameters

Color temperature	Color rendering index	Red component	Color fidelity	Color gamut	Color quality scale	Color coordinate cie 1931	Color coordinate cie 1931	Color coordinate	Color coordinate	Color deviation from black body
CCT	CRI	CRI R9	TM30 Rf	TM30 Rg	CQS	x	y	u	v	Δuv
3975 K	81.0	12.4	81.3	99.3	80.6	0.381	0.376	0.226	0.334	-0.0008

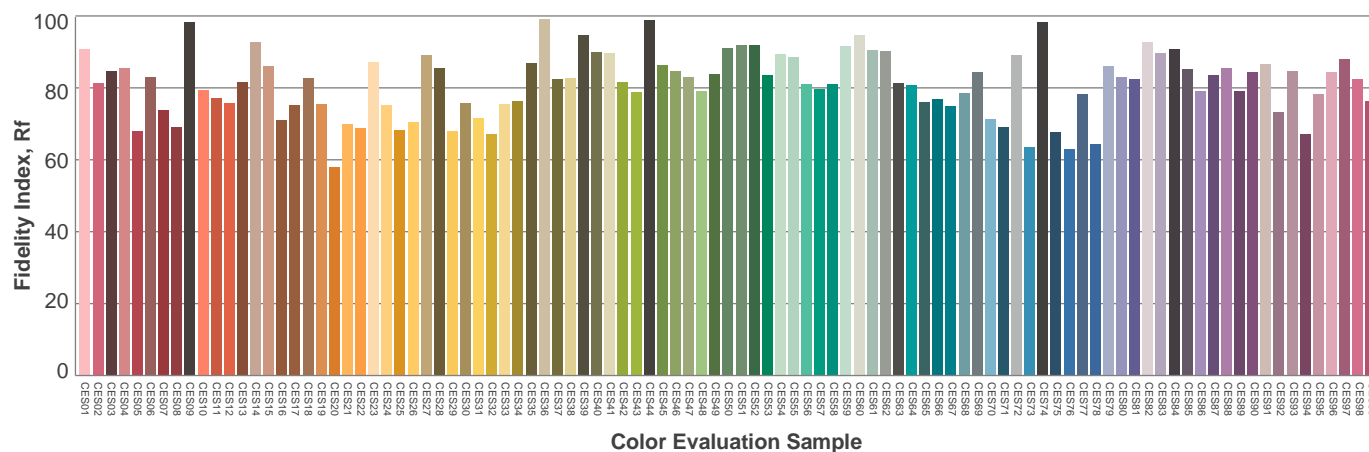
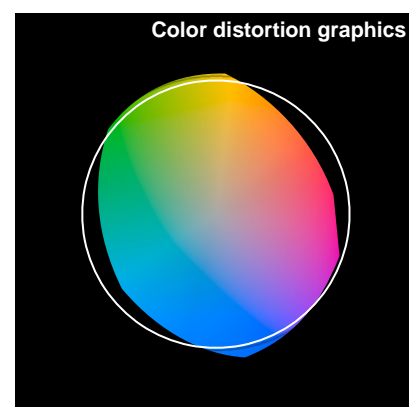
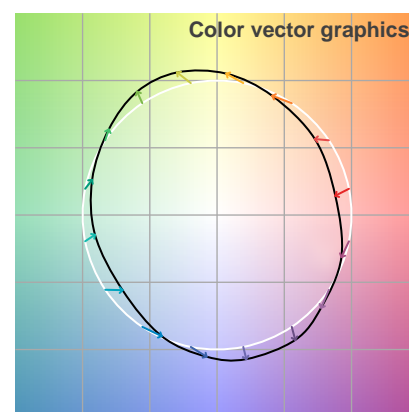
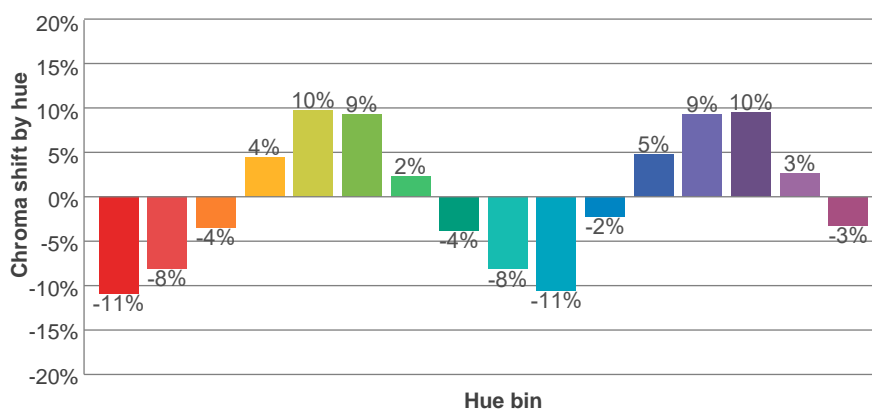
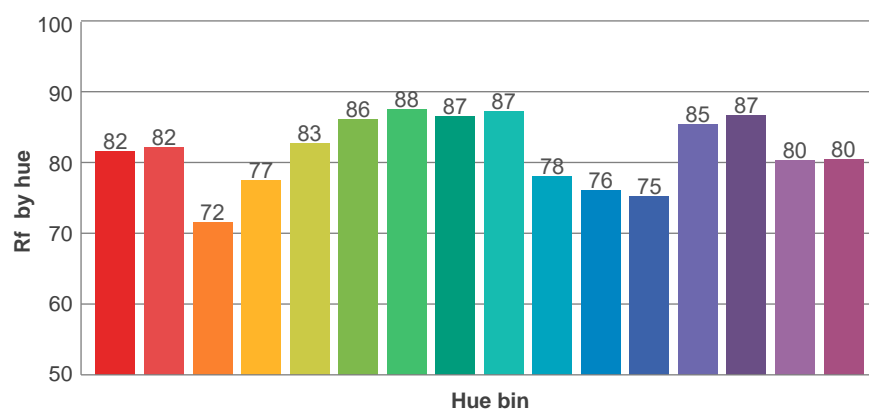
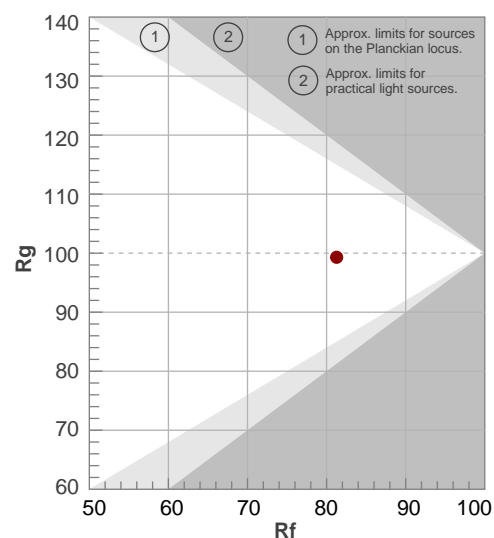
Rf 81.3

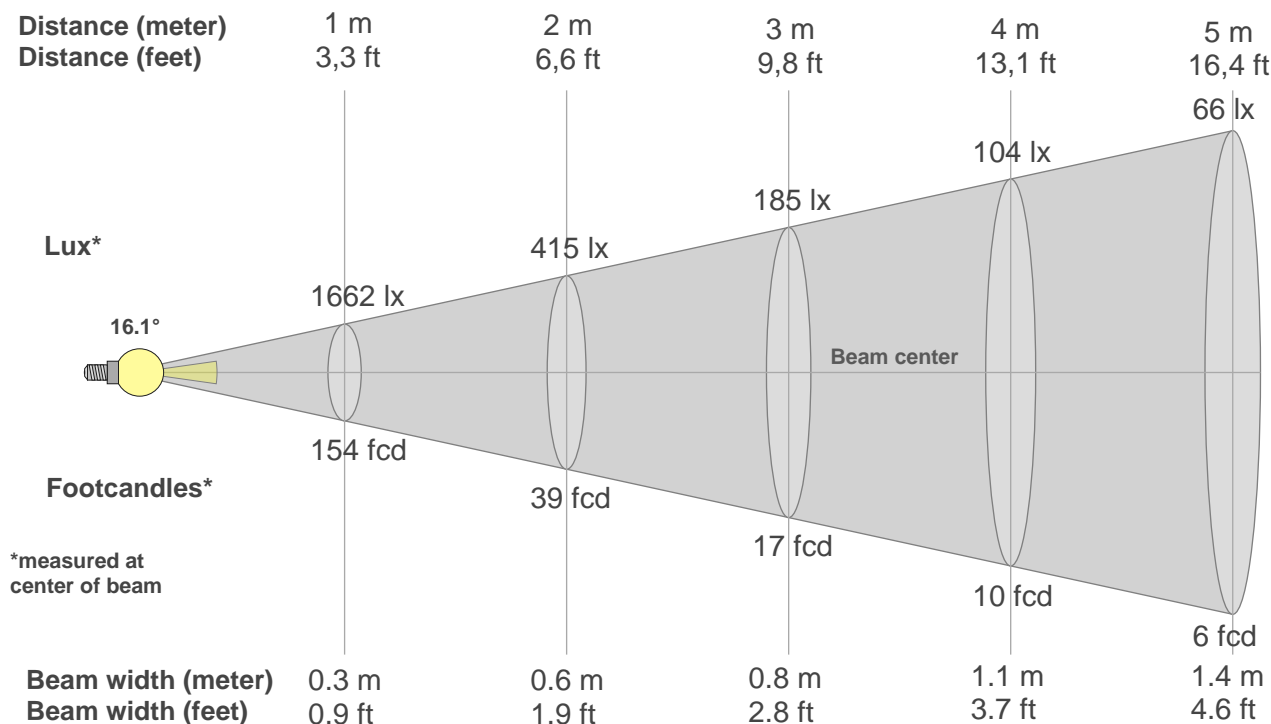
Fidelity index Rf

Rg 99.3

Gammut index Rg

		Graphic shifts (%)	
Hue Bin	R_l	Chroma	Hue
1	82	-11%	-3%
2	82	-8%	7%
3	72	-4%	15%
4	77	4%	14%
5	83	10%	8%
6	86	9%	-2%
7	88	2%	-8%
8	87	-4%	-8%
9	87	-8%	-3%
10	78	-11%	7%
11	76	-2%	16%
12	75	5%	13%
13	85	9%	0%
14	87	10%	-3%
15	80	3%	-14%
16	80	-3%	-13%





Beam intensities from 1-20m

1m	2m	3m	4m	5m	6m	7m	8m	9m	10m	11m	12m	13m	14m	15m	16m	17m	18m	19m	20m
3.3ft	6.6ft	9.8ft	13.1ft	16.4ft	19.7ft	23ft	26.2ft	29.5ft	32.8ft	36.1ft	39.4ft	42.7ft	45.9ft	49.2ft	52.5ft	55.8ft	59.1ft	62.3ft	65.6ft
1662lx	415lx	185lx	104lx	66lx	46lx	34lx	26lx	21lx	17lx	14lx	12lx	10lx	8lx	7lx	6lx	6lx	5lx	5lx	4lx
154.4fcd	38.6fcd	17.2fcd	9.6fcd	6.2fcd	4.3fcd	3.2fcd	2.4fcd	1.9fcd	1.5fcd	1.3fcd	1.1fcd	0.9fcd	0.8fcd	0.7fcd	0.6fcd	0.5fcd	0.5fcd	0.4fcd	0.4fcd

Intensities in 0° c-plane

0°	2°	4°	6°	8°	10°	12°	14°	16°	18°	20°	22°	24°	26°	28°	30°	32°	34°	36°	38°
1662	1582	1337	1061	832	665	552	474	413	364	328	302	273	240	203	165	128	94	68	48
100%	95%	80%	64%	50%	40%	33%	29%	25%	22%	20%	18%	16%	14%	12%	10%	8%	6%	4%	3%

Intensities in 90° c-plane

0°	2°	4°	6°	8°	10°	12°	14°	16°	18°	20°	22°	24°	26°	28°	30°	32°	34°	36°	38°
1662	1579	1359	1097	853	665	544	462	400	348	302	259	219	184	153	127	105	84	65	48
100%	95%	82%	66%	51%	40%	33%	28%	24%	21%	18%	16%	13%	11%	9%	8%	6%	5%	4%	3%

Intensities in 180° c-plane

0°	2°	4°	6°	8°	10°	12°	14°	16°	18°	20°	22°	24°	26°	28°	30°	32°	34°	36°	38°
1662	1557	1339	1071	831	669	556	475	413	359	309	263	221	184	153	127	106	85	66	49
100%	94%	81%	64%	50%	40%	33%	29%	25%	22%	19%	16%	13%	11%	9%	8%	6%	5%	4%	3%

Intensities in 270° c-plane

0°	2°	4°	6°	8°	10°	12°	14°	16°	18°	20°	22°	24°	26°	28°	30°	32°	34°	36°	38°
1662	1568	1333	1075	852	696	600	527	464	409	363	330	293	256	217	177	137	100	72	50
100%	94%	80%	65%	51%	42%	36%	32%	28%	25%	22%	20%	18%	15%	13%	11%	8%	6%	4%	3%

Beam angle 50%	Field angle 10%	Cutoff angle 2,5%	Intensity ratio in 120° cone	Intensity ratio in 90° cone
{B_ANG}°	54.6°	78.6°	98.3%	96.8%