

Light efficiency:

44 Lumen/Watt

Light quality:

CRI: 80.6

Color temperature:

3877 K

Output: 549 lm

Peak: 1206 cd

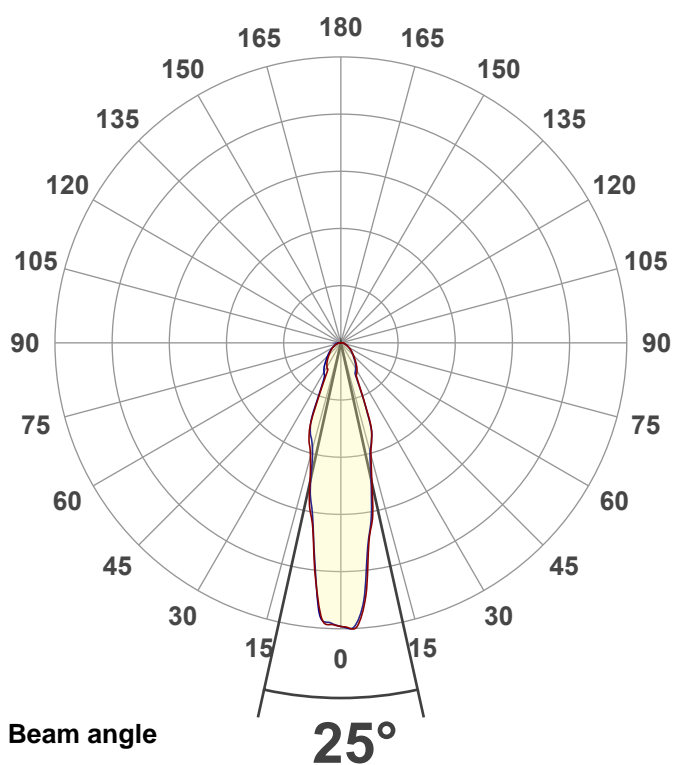
Power: 12.5 W

PF: 0.91



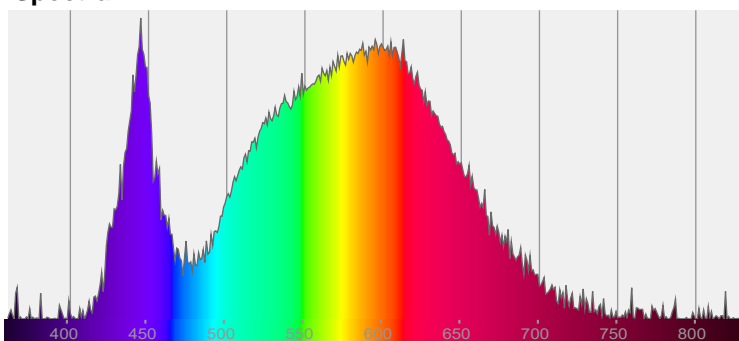
EXT-SKY-D-SW-10LM-40K-80-40D-24-BK-BK-WAND

Date and time:
11/3/2021 2:09:47 PM

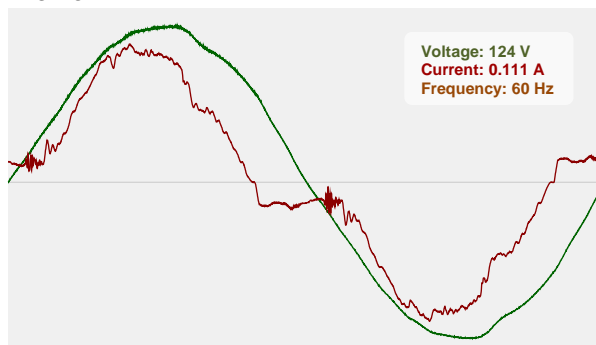


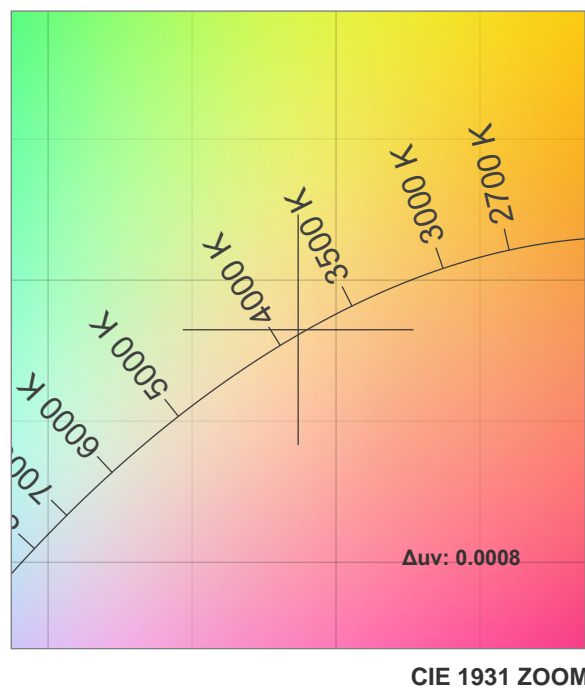
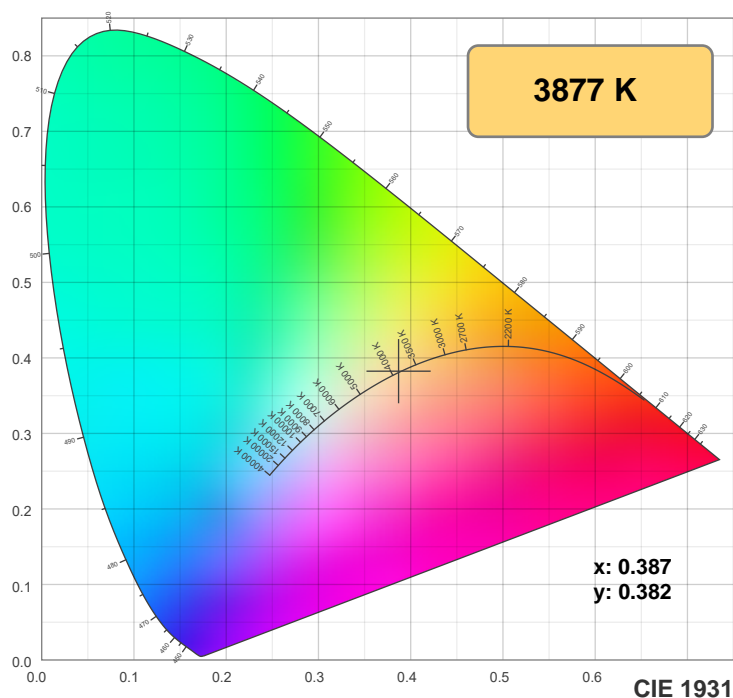
CIE 1931
x: 0.387
y: 0.382

Spectra



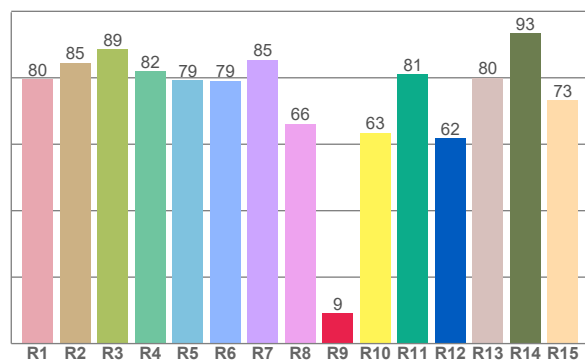
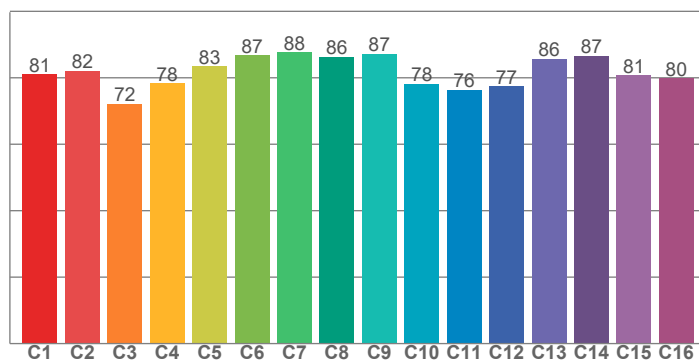
Power





TM30: 81.5

CRI: 80.6 (R1-R8)



CRI R values, only R1-R8 are used to calculate final CRI value

R1	R2	R3	R4	R5	R6	R7	R8	R9	R10	R11	R12	R13	R14	R15
79.5	84.5	88.6	81.9	79.2	79.1	85.4	66.1	9.2	63.4	81.0	61.9	80.0	93.3	73.2

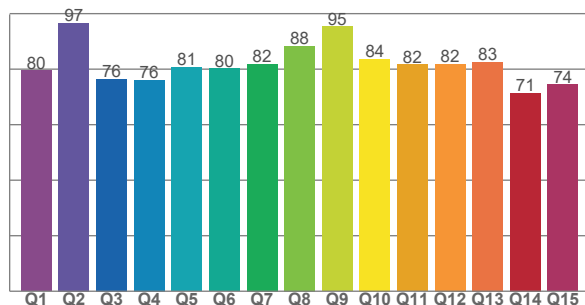
TM30 C values, 16 binned values out of total of 99 C values

C1	C2	C3	C4	C5	C6	C7	C8	C9	C10	C11	C12	C13	C14	C15	C16
81.1	82.1	72.2	78.4	83.4	86.8	87.6	86.4	87.1	78.2	76.4	77.4	85.7	86.6	80.8	79.9

CQS Q values

Q1	Q2	Q3	Q4	Q5	Q6	Q7	Q8	Q9	Q10	Q11	Q12	Q13	Q14	Q15
79.5	96.7	76.4	76.1	80.7	80.2	81.9	88.3	95.4	83.6	81.7	81.8	82.6	71.4	74.4

CQS: 80.8



Color parameters

Color temperature	Color rendering index	Red component	Color fidelity	Color gamut	Color quality scale	Color coordinate cie 1931	Color coordinate cie 1931	Color coordinate	Color coordinate	Color deviation from black body
CCT	CRI	CRI R9	TM30 Rf	TM30 Rg	CQS	x	y	u	v	Δuv
3877 K	80.6	9.2	81.5	98.9	80.8	0.387	0.382	0.227	0.337	0.0008

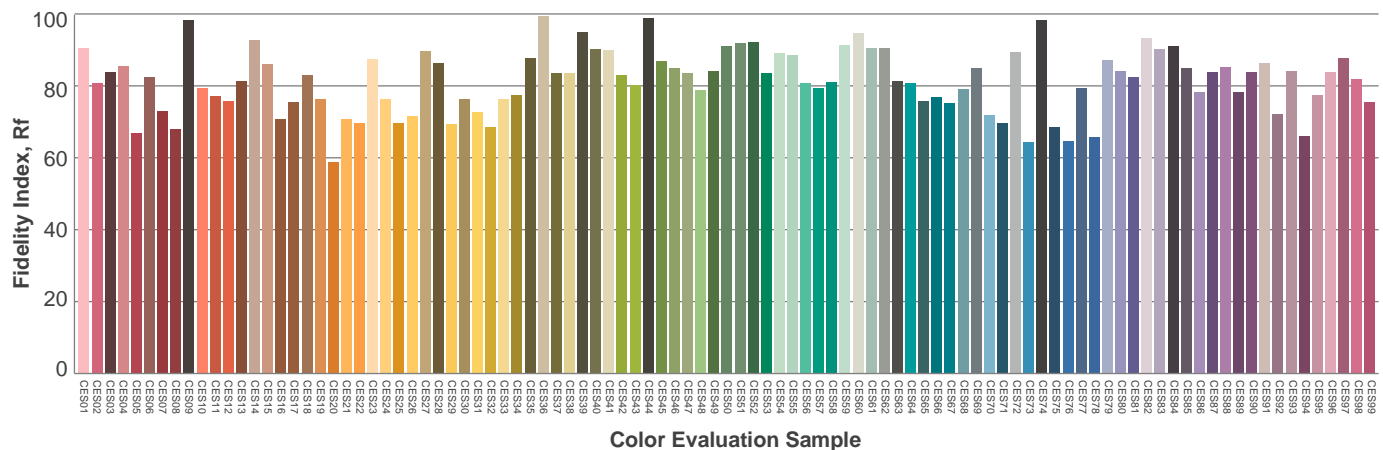
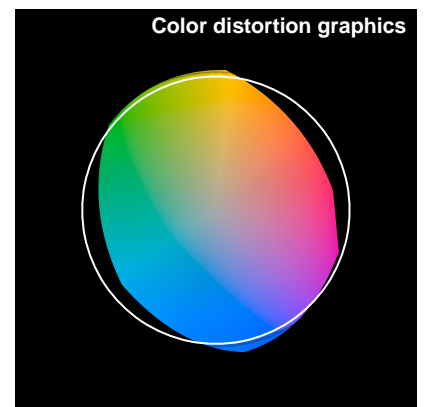
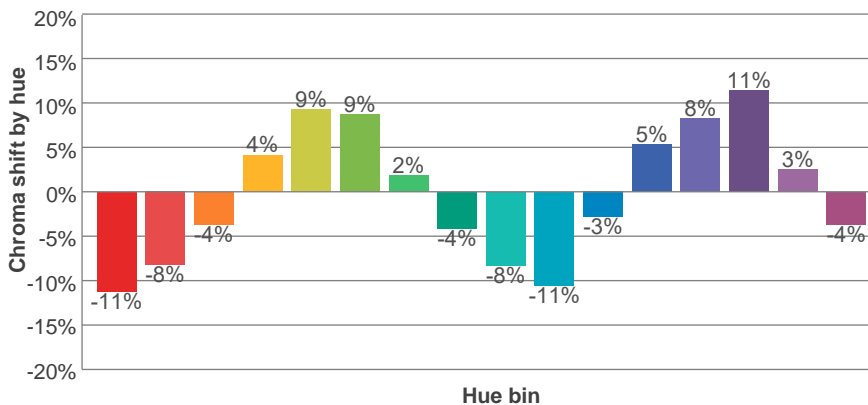
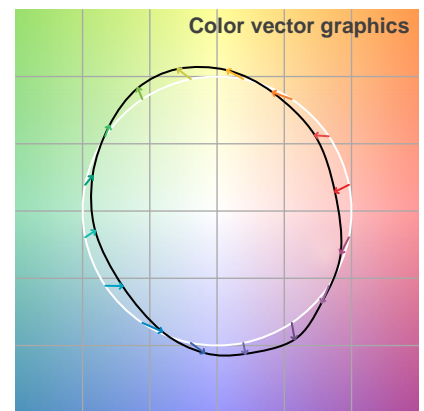
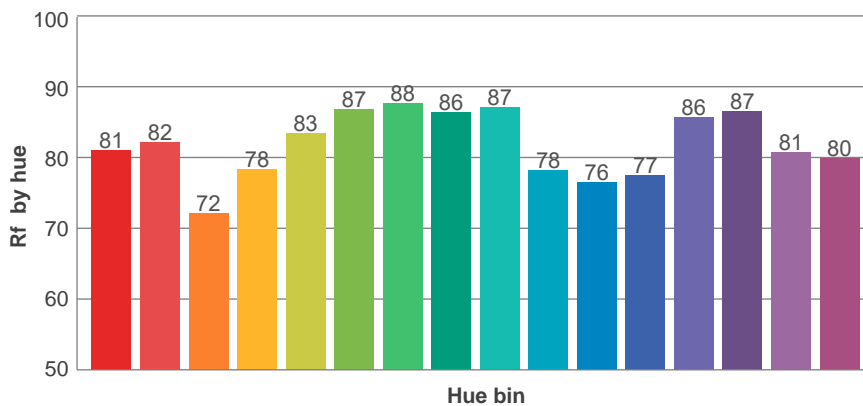
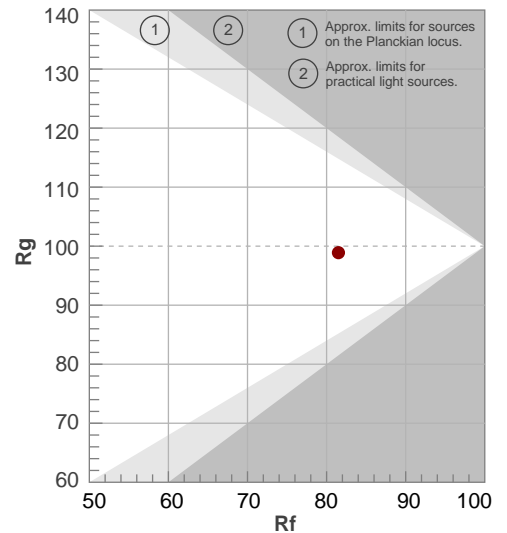
Rf 81.5

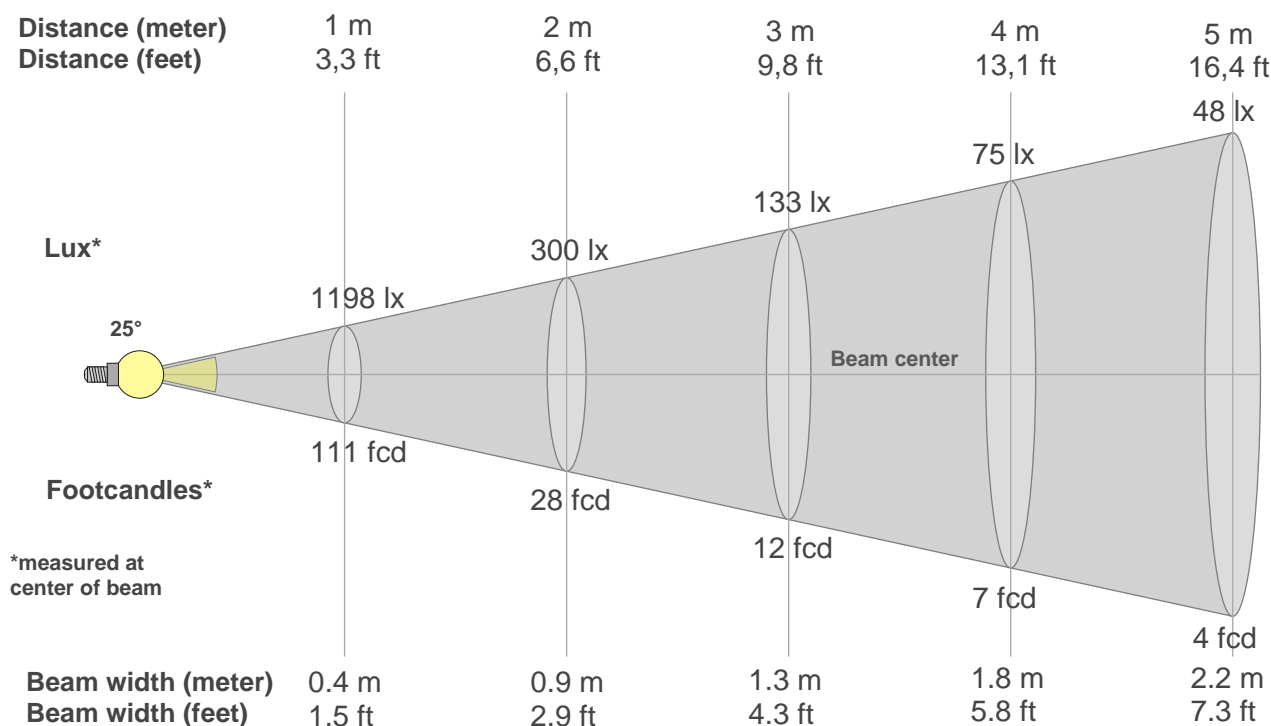
Fidelity index Rf

Rg 98.9

Gamut index Rg

Hue Bin	R _f	Graphic shifts (%)	
		Chroma	Hue
1	81	-11%	-3%
2	82	-8%	6%
3	72	-4%	15%
4	78	4%	13%
5	83	9%	8%
6	87	9%	-2%
7	88	2%	-8%
8	86	-4%	-8%
9	87	-8%	-3%
10	78	-11%	7%
11	76	-3%	16%
12	77	5%	11%
13	86	8%	0%
14	87	11%	-5%
15	81	3%	-13%
16	80	-4%	-13%





Beam intensities from 1-20m

1m	2m	3m	4m	5m	6m	7m	8m	9m	10m	11m	12m	13m	14m	15m	16m	17m	18m	19m	20m
3.3ft	6.6ft	9.8ft	13.1ft	16.4ft	19.7ft	23ft	26.2ft	29.5ft	32.8ft	36.1ft	39.4ft	42.7ft	45.9ft	49.2ft	52.5ft	55.8ft	59.1ft	62.3ft	65.6ft
1198lx	300lx	133lx	75lx	48lx	33lx	24lx	19lx	15lx	12lx	10lx	8lx	7lx	6lx	5lx	5lx	4lx	4lx	3lx	3lx
111.3fcd	27.8fcd	12.4fcd	7fcd	4.5fcd	3.1fcd	2.3fcd	1.7fcd	1.4fcd	1.1fcd	0.9fcd	0.8fcd	0.7fcd	0.6fcd	0.5fcd	0.4fcd	0.4fcd	0.3fcd	0.3fcd	0.3fcd

Intensities in 0° c-plane

0°	2°	4°	6°	8°	10°	12°	14°	16°	18°	20°	22°	24°	26°	28°	30°	32°	34°	36°	38°
1198	1202	1163	1042	854	762	642	537	466	421	369	260	185	153	144	136	129	120	110	102
100%	100%	97%	87%	71%	64%	54%	45%	39%	35%	31%	22%	15%	13%	12%	11%	11%	10%	9%	8%

Intensities in 90° c-plane

0°	2°	4°	6°	8°	10°	12°	14°	16°	18°	20°	22°	24°	26°	28°	30°	32°	34°	36°	38°
1198	1201	1143	1009	845	742	619	519	460	417	355	249	163	141	132	125	118	111	102	95
100%	100%	95%	84%	71%	62%	52%	43%	38%	35%	30%	21%	14%	12%	11%	10%	10%	9%	9%	8%

Intensities in 180° c-plane

0°	2°	4°	6°	8°	10°	12°	14°	16°	18°	20°	22°	24°	26°	28°	30°	32°	34°	36°	38°
1198	1188	1164	1013	846	736	639	535	472	435	379	277	181	131	124	118	112	106	99	92
100%	99%	97%	84%	71%	61%	53%	45%	39%	36%	32%	23%	15%	11%	10%	10%	9%	9%	8%	8%

Intensities in 270° c-plane

0°	2°	4°	6°	8°	10°	12°	14°	16°	18°	20°	22°	24°	26°	28°	30°	32°	34°	36°	38°
1198	1186	1159	1007	838	711	620	498	445	412	371	297	200	159	151	143	135	127	117	107
100%	99%	97%	84%	70%	59%	52%	42%	37%	34%	31%	25%	17%	13%	13%	12%	11%	11%	10%	9%

Beam angle 50%	Field angle 10%	Cutoff angle 2,5%	Intensity ratio in 120° cone	Intensity ratio in 90° cone
{B_ANG}°	64.7°	131.2°	89.3%	76.3%